

NOTICE TO CONGRESS: MONTHLY UPDATE ON FLOOD MAPPING

Biggert-Waters Flood Insurance Reform Act of 2012 and Homeowner
Flood Insurance Affordability Act of 2014

July 2019



FEMA

TABLE OF CONTENTS

- 1. Introduction 1
- 2. Risk MAP News..... 2
- 3. Notification 3
 - 3.1. Estimated Release of Preliminary Maps 3
 - 3.2. Estimated Release of Revised Preliminary Maps 5
 - 3.3. Actions Taken by FEMA 6
- 4. LEGAL REQUIREMENTS 12
- Appendix A: Risk MAP process graphic 13
- Appendix B: Resources 15



1. INTRODUCTION

Flooding is a serious risk to life and property in the United States, but flood risk changes over time. The Federal Emergency Management Agency’s (FEMA) Risk Mapping, Assessment, and Planning (Risk MAP) program helps communities understand and prepare for changing flood risks by updating flood maps. These updated flood maps help communities make decisions about building codes and other standards that make residents, homes, and businesses safer from flooding.

By law, FEMA must look at community flood maps every five years and decide whether to update or change them. FEMA must also tell Congress every month about any planned changes to community flood maps. This Notice to Congress includes information about:

- Communities that (in the next three months) are scheduled to receive updated draft maps from FEMA (called preliminary maps and revised preliminary maps)
- Communities that have received preliminary or revised preliminary maps from FEMA
- The period of time during which community notices will be published about the release of the maps and the appeals period
- Communities that have received Letters of Final Determination (LFDs) about their updated maps
- Communities where revised flood maps are considered final (called effective maps)

This monthly Notice to Congress will also include updates on the Risk MAP program, news on how communities are protecting themselves against flood risks, and other topics.

Risk MAP Vision

“The vision for Risk MAP is to deliver quality data that increases public awareness and leads to action that reduces risk to life and property.”



2. RISK MAP NEWS

FEMA Region VIII Engages Students at the Second Rocky Mountain Environmental Challenge

FEMA partnered with *Earth Force*, an international nonprofit that engages young people as environmental problem solvers, to develop the Rocky Mountain Environmental Challenge (RMEC). This classroom-based competition helps teachers engage students in real-world problem solving and rewards young learners for thinking creatively about how to protect their communities from flooding and other natural hazards. This program targets students in grades 5 through 12 as future leaders who will play a role in advocating for mitigation actions and supporting projects to improve their communities. More than 300 students have participated in the Earth Force initiative over the past two years.



During this year's Challenge in April, more than 75 Colorado public school students from the top five classrooms presented plans for reducing their community's flood risks. The event was the culmination of the students' hard work throughout the course of the school year to research flood risks, create real-life solutions, and present their risk-reduction proposal to a panel of judges. To help students prepare,

teachers worked with multiple community experts and volunteers, from stormwater engineers to wild-lands fire professionals, strengthening the connection between classroom and community. A student representative from the winning classroom traveled to the Association of State Floodplain Managers annual conference in May to present their findings on the heightened risk of flooding after wildfires, alongside FEMA Region VIII's Tony Mendes and Earth Force's President and CEO Vince Meldrum.



3. NOTIFICATION

The following table shows preliminary and revised preliminary flood mapping studies that are expected to be released in the current month and the next two months. An additional table shows the studies where FEMA took action by issuing preliminary or revised maps; starting an appeal period; releasing an LFD or effective maps. All tables show the FEMA Region, State, and county where the action will take or has taken place. The tables also provide details on the flood mapping study status and estimated or actual dates.

3.1. ESTIMATED RELEASE OF PRELIMINARY MAPS

Some communities within the counties listed below have been studied to measure their flood risk. This flood hazard is shown in the Preliminary Flood Insurance Rate Maps (FIRMs) and Flood Insurance Study (FIS). The table identifies the month that FEMA plans to deliver the preliminary FIRM and FIS report to the designated community officials.

The column called “Estimated Schedule of Community Meeting” shows which quarter of the calendar year a community meeting to discuss the FIS and preliminary FIRM might be scheduled. In some cases, several meetings are needed to cover all communities that were studied.

Finally, the column named “Estimated Public Notice and Starting Appeal Period” shows which quarter of the calendar year an appeal period starts in a study area. The appeals period starts after the second notice is placed in the local newspaper. In study areas that cover a number of communities, notices will have to be put in several local papers, which means each community in a study could have a different publication date.

Region	State	County Name	Estimated Preliminary Issuance	Estimated Schedule of Community Meetings	Estimated Public Notice and Starting Appeal Period
2	NJ	Mercer County	September 2019	Quarter 4, 2019	Quarter 4, 2019
3	VA	Amelia County	August 2019	Quarter 4, 2019	Quarter 1, 2020
3	VA	Essex County	September 2019	Quarter 1, 2020	Quarter 2, 2020
3	VA	Lancaster County	July 2019	Quarter 4, 2019	Quarter 1, 2020
3	VA	Middlesex County	September 2019	Quarter 1, 2020	Quarter 2, 2020
3	VA	Nottoway County	September 2019	Quarter 1, 2020	Quarter 2, 2020
3	VA	Pulaski County	September 2019	Quarter 1, 2020	Quarter 2, 2020
3	VA	Richmond County	July 2019	Quarter 4, 2019	Quarter 1, 2020
3	VA	Westmoreland County	July 2019	Quarter 4, 2019	Quarter 1, 2020
3	WV	Greenbrier County	September 2019	Quarter 1, 2020	Quarter 2, 2020
3	WV	Kanawha County	September 2019	Quarter 1, 2020	Quarter 2, 2020
3	WV	Monroe County	September 2019	Quarter 1, 2020	Quarter 2, 2020
3	WV	Nicholas County	September 2019	Quarter 1, 2020	Quarter 2, 2020
3	WV	Summers County	September 2019	Quarter 1, 2020	Quarter 2, 2020
3	WV	Webster County	September 2019	Quarter 1, 2020	Quarter 2, 2020
4	FL	Bay County	August 2019	Quarter 4, 2019	Quarter 1, 2020



Region	State	County Name	Estimated Preliminary Issuance	Estimated Schedule of Community Meetings	Estimated Public Notice and Starting Appeal Period
4	FL	DeSoto County	July 2019	Quarter 4, 2019	Quarter 1, 2020
4	FL	Santa Rosa County	July 2019	Quarter 4, 2019	Quarter 1, 2020
4	TN	Dyer County	September 2019	Quarter 4, 2019	Quarter 1, 2020
5	IL	Lake County	August 2019	Quarter 3, 2019	Quarter 4, 2019
5	IN	Hendricks County	September 2019	Quarter 4, 2019	Quarter 1, 2020
5	IN	Lake County	August 2019	Quarter 3, 2019	Quarter 4, 2019
5	MI	Allegan County	September 2019	Quarter 4, 2019	Quarter 1, 2020
5	MI	Arenac County	August 2019	Quarter 3, 2019	Quarter 4, 2019
5	MI	Berrien County	September 2019	Quarter 4, 2019	Quarter 1, 2020
5	MI	Iosco County	August 2019	Quarter 3, 2019	Quarter 4, 2019
5	MI	Mason County	August 2019	Quarter 3, 2019	Quarter 4, 2019
5	MI	Muskegon County	September 2019	Quarter 4, 2019	Quarter 1, 2020
5	MI	Oceana County	August 2019	Quarter 3, 2019	Quarter 4, 2019
5	MI	Ottawa County	September 2019	Quarter 4, 2019	Quarter 1, 2020
5	MI	Sanilac County	August 2019	Quarter 3, 2019	Quarter 4, 2019
5	MI	St. Clair County	August 2019	Quarter 3, 2019	Quarter 4, 2019
5	MI	Van Buren County	August 2019	Quarter 3, 2019	Quarter 4, 2019
5	MN	Koochiching County	September 2019	Quarter 4, 2019	Quarter 1, 2020
5	MN	Lake of the Woods County	September 2019	Quarter 4, 2019	Quarter 1, 2020
5	MN	Pennington County	September 2019	Quarter 4, 2019	Quarter 1, 2020
5	OH	Allen County	September 2019	Quarter 4, 2019	Quarter 1, 2020
5	OH	Greene County	September 2019	Quarter 4, 2019	Quarter 1, 2020
5	OH	Van Wert County	September 2019	Quarter 4, 2019	Quarter 1, 2020
5	WI	Brown County	September 2019	Quarter 4, 2019	Quarter 1, 2020
5	WI	Oconto County	September 2019	Quarter 4, 2019	Quarter 1, 2020
5	WI	Walworth County	August 2019	Quarter 3, 2019	Quarter 4, 2019
5	WI	Washington County	September 2019	Quarter 4, 2019	Quarter 1, 2020
5	WI	Waukesha County	September 2019	Quarter 4, 2019	Quarter 1, 2020
6	AR	Pulaski County	July 2019	Quarter 3, 2019	Quarter 4, 2019
6	TX	El Paso County	August 2019	Quarter 3, 2019	Quarter 4, 2019
6	TX	Victoria County	September 2019	Quarter 4, 2019	Quarter 1, 2020
7	IA	Buena Vista County	July 2019	Quarter 3, 2019	Quarter 4, 2019
7	IA	Clay County	August 2019	Quarter 4, 2019	Quarter 4, 2019
7	IA	Crawford County	July 2019	Quarter 3, 2019	Quarter 4, 2019
7	IA	Emmet County	July 2019	Quarter 3, 2019	Quarter 4, 2019
7	IA	Lyon County	August 2019	Quarter 4, 2019	Quarter 4, 2019
7	IA	O'Brien County	July 2019	Quarter 3, 2019	Quarter 4, 2019
7	IA	Sac County	July 2019	Quarter 3, 2019	Quarter 4, 2019
7	IA	Sioux County	July 2019	Quarter 3, 2019	Quarter 4, 2019
7	KS	Anderson County	September 2019	Quarter 4, 2019	Quarter 4, 2019
7	KS	Coffey County	August 2019	Quarter 4, 2019	Quarter 4, 2019
7	KS	Dickinson County	July 2019	Quarter 3, 2019	Quarter 4, 2019
7	KS	Douglas County	September 2019	Quarter 4, 2019	Quarter 4, 2019
7	KS	Ellsworth County	July 2019	Quarter 3, 2019	Quarter 4, 2019
7	KS	Franklin County	September 2019	Quarter 4, 2019	Quarter 4, 2019
7	KS	Lyon County	August 2019	Quarter 4, 2019	Quarter 4, 2019
7	KS	Morris County	August 2019	Quarter 4, 2019	Quarter 4, 2019



Region	State	County Name	Estimated Preliminary Issuance	Estimated Schedule of Community Meetings	Estimated Public Notice and Starting Appeal Period
7	KS	Morris County	August 2019	Quarter 4, 2019	Quarter 4, 2019
7	KS	Osage County	September 2019	Quarter 4, 2019	Quarter 4, 2019
7	KS	Rice County	July 2019	Quarter 3, 2019	Quarter 4, 2019
7	KS	Wabaunsee County	September 2019	Quarter 4, 2019	Quarter 4, 2019
7	MO	Christian County	July 2019	Quarter 3, 2019	Quarter 4, 2019
7	MO	Dunklin County	September 2019	Quarter 4, 2019	Quarter 4, 2019
7	MO	Mississippi County	September 2019	Quarter 4, 2019	Quarter 4, 2019
7	MO	New Madrid County	September 2019	Quarter 4, 2019	Quarter 4, 2019
7	MO	Pemiscot County	September 2019	Quarter 4, 2019	Quarter 4, 2019
7	MO	Pettis County	August 2019	Quarter 4, 2019	Quarter 4, 2019
7	MO	St. Louis City	September 2019	Quarter 4, 2019	Quarter 4, 2019
7	MO	St. Louis County	September 2019	Quarter 4, 2019	Quarter 4, 2019
7	MO	Stoddard County	September 2019	Quarter 4, 2019	Quarter 4, 2019
7	MO	Stone County	August 2019	Quarter 4, 2019	Quarter 4, 2019
7	NE	Nemaha County	July 2019	Quarter 3, 2019	Quarter 4, 2019
7	NE	Richardson County	July 2019	Quarter 3, 2019	Quarter 4, 2019
8	CO	Boulder County	August 2019	Quarter 3, 2019	Quarter 1, 2020
8	UT	Salt Lake County	July 2019	Quarter 3, 2019	Quarter 1, 2020
8	SD	Turner County	September 2019	Quarter 4, 2019	Quarter 1, 2020
8	CO	Adams County	July 2019	Quarter 3, 2019	Quarter 1, 2020
8	CO	Douglas County	July 2019	Quarter 3, 2019	Quarter 1, 2020
8	CO	Arapahoe County	July 2019	Quarter 3, 2019	Quarter 1, 2020
8	UT	Summit County	August 2019	Quarter 3, 2019	Quarter 1, 2020
9	AZ	Coconino County	August 2019	Quarter 4, 2019	Quarter 1, 2020
9	AZ	Coconino County	August 2019	Quarter 4, 2019	Quarter 1, 2020
9	AZ	Maricopa County	July 2019	Quarter 4, 2019	Quarter 1, 2020
9	AZ	Yavapai County	August 2019	Quarter 4, 2019	Quarter 1, 2020
9	CA	Imperial County	July 2019	Quarter 4, 2019	Quarter 1, 2020
9	CA	Riverside County	July 2019	Quarter 4, 2019	Quarter 1, 2020
9	CA	San Diego County	July 2019	Quarter 4, 2019	Quarter 1, 2020
10	WA	Clallam County	August 2019	Quarter 4, 2019	Quarter 4, 2019

3.2. ESTIMATED RELEASE OF REVISED PRELIMINARY MAPS

In some cases, FEMA may decide to issue a revised preliminary map to address changes to preliminary flood hazard determinations, or to address changes to a non-technical issue. The table below shows the studies for which FEMA plans to release revised preliminary maps. The actual release dates are scheduled in coordination with the State and/or local governments.

The table below shows an estimate for the month the revised maps will be released. Community meetings, notices in local papers, and dates of appeal periods are not shown because these are often not needed for revised preliminary maps.



Region	State	County Name	Estimated Revised Preliminary Issuance
1	ME	Cumberland County	July 2019
3	MD	Frederick County	September 2019
4	FL	Gulf County	August 2019
4	SC	Beaufort County	August 2019
4	SC	Charleston County	August 2019
4	SC	Georgetown County	August 2019
4	SC	Horry County	August 2019
5	MN	Polk County	August 2019
5	OH	Erie County	August 2019
5	OH	Logan County	July 2019
5	OH	Lorain County	July 2019
5	OH	Ottawa County	July 2019
7	IA	Jackson County	August 2019
7	MO	Howell County	August 2019
8	UT	Davis County	August 2019
8	CO	City and County of Denver	July 2019
9	AZ	Maricopa County	September 2019
9	CA	Ventura County	September 2019

3.3. ACTIONS TAKEN BY FEMA

The table below shows the counties where FEMA released a preliminary FIRM and FIS report, began a 90-day appeal period, released a revised preliminary FIRM and FIS report, or sent LFDs in the previous month. It also identifies counties where FIRMs and FIS reports became effective during the previous month.

Region	State	County Name	Action Taken	Date
2	NY	Erie County	Maps Effective	6/7/2019
3	PA	Bradford County	Appeal Start	6/13/2019
3	PA	Juniata County	Appeal Start	6/26/2019
3	PA	Lackawanna County	Revised Preliminary	6/7/2019
3	PA	Perry County	Maps Effective	6/20/2019
3	PA	Union County	Appeal Start	6/26/2019
3	PA	Wyoming County	Appeal Start	6/27/2019
3	VA	Madison County	Appeal Start	6/27/2019
3	VA	Rappahannock County	Appeal Start	6/27/2019
4	AL	Mobile County	Appeal Start	6/12/2019
4	FL	Franklin County	Preliminary	6/13/2019
4	FL	Gadsden County	Preliminary	6/13/2019
4	FL	Hendry County	Preliminary	6/27/2019
4	FL	Jackson County	Preliminary	6/13/2019



Region	State	County Name	Action Taken	Date
4	FL	Lee County	Preliminary	6/28/2019
4	GA	Cherokee County	Maps Effective	6/7/2019
4	GA	Columbia County	Maps Effective	6/7/2019
4	GA	Floyd County	Maps Effective	6/7/2019
4	GA	Forsyth County	Maps Effective	6/7/2019
4	GA	Hart County	LFD Issued	6/20/2019
4	GA	Paulding County	Maps Effective	6/7/2019
4	GA	Polk County	Maps Effective	6/7/2019
4	KY	Carroll County	Appeal Start	6/27/2019
4	KY	Henry County	Appeal Start	6/26/2019
4	KY	Oldham County	Appeal Start	6/27/2019
4	KY	Spencer County	Appeal Start	6/12/2019
4	MS	Forrest County	Preliminary	6/28/2019
4	MS	Greene County	Preliminary	6/28/2019
4	MS	Jones County	Preliminary	6/28/2019
4	MS	Perry County	Preliminary	6/28/2019
4	NC	Bladen County	LFD Issued	6/6/2019
4	NC	Brunswick County	LFD Issued	6/6/2019
4	NC	Columbus County	LFD Issued	6/6/2019
4	NC	Durham County	LFD Issued	6/6/2019
4	NC	Franklin County	LFD Issued	6/6/2019
4	NC	Granville County	LFD Issued	6/6/2019
4	NC	New Hanover County	LFD Issued	6/6/2019
4	NC	Orange County	LFD Issued	6/6/2019
4	NC	Pender County	LFD Issued	6/6/2019
4	NC	Person County	LFD Issued	6/6/2019
4	NC	Robeson County	LFD Issued	6/6/2019
4	NC	Sampson County	LFD Issued	6/6/2019
4	NC	Scotland County	LFD Issued	6/6/2019
4	NC	Vance County	LFD Issued	6/6/2019
4	NC	Wake County	LFD Issued	6/6/2019
4	SC	Greenwood County	Maps Effective	6/20/2019
4	SC	Laurens County	Maps Effective	6/20/2019
4	SC	Newberry County	Maps Effective	6/20/2019
5	IL	Cook County	Preliminary	6/26/2019
5	IN	Carroll County	Maps Effective	6/20/2019
5	IN	Johnson County	Appeal Start	6/28/2019
5	IN	LaPorte County	Preliminary	6/28/2019
5	IN	Porter County	Preliminary	6/28/2019
5	MI	Emmet County	Preliminary	6/4/2019
5	MI	Manistee County	Preliminary	6/10/2019
5	MN	Cottonwood County	Preliminary	6/25/2019



Region	State	County Name	Action Taken	Date
5	MN	Norman County	LFD Issued	6/20/2019
5	OH	Clinton County	Preliminary	6/28/2019
5	OH	Defiance County	Preliminary	6/21/2019
5	OH	Highland County	Preliminary	6/28/2019
5	OH	Warren County	LFD Issued	6/20/2019
5	WI	Lafayette County	Appeal Start	6/20/2019
5	WI	Monroe County	LFD Issued	6/6/2019
6	AR	Pulaski County	Maps Effective	6/7/2019
6	OK	Canadian County	Maps Effective	6/7/2019
6	OK	Garfield County	Maps Effective	6/7/2019
6	OK	Kingfisher County	Maps Effective	6/7/2019
6	OK	Logan County	Maps Effective	6/7/2019
6	TX	Aransas County	LFD Issued	6/7/2019
6	TX	Hill County	LFD Issued	6/20/2019
6	TX	Llano County	Appeal Start	6/26/2019
6	TX	McLennan County	LFD Issued	6/20/2019
6	TX	San Patricio County	LFD Issued	6/20/2019
6	TX	Williamson County	LFD Issued	6/20/2019
7	IA	Benton County	LFD Issued	6/20/2019
7	IA	Clayton County	Appeal Start	6/5/2019
7	IA	Clinton County	Appeal Start	6/1/2019
7	IA	Dubuque County	Appeal Start	6/5/2019
7	IA	Fayette County	Appeal Start	6/5/2019
7	IA	Grundy County	LFD Issued	6/20/2019
7	IA	Hamilton County	LFD Issued	6/20/2019
7	IA	Osceola County	Preliminary	6/27/2019
7	KS	Montgomery County	Maps Effective	6/20/2019
7	MO	Greene County	Appeal Start	6/27/2019
7	MO	Jefferson County	Maps Effective	6/20/2019
7	MO	Livingston County	LFD Issued	6/20/2019
7	NE	Burt County	Appeal Start	6/13/2019
8	CO	Clear Creek County	LFD Issued	6/20/2019
8	CO	Jefferson County	LFD Issued	6/20/2019
8	ND	Cass County	Appeal Start	6/12/2019
9	AZ	Mohave	Preliminary	6/28/2019
9	CA	Inyo County	Preliminary	6/25/2019
9	CA	San Diego County	LFD Issued	6/20/2019
9	NV	Carson City	Maps Effective	6/20/2019
10	ID	Canyon County	Maps Effective	6/7/2019
10	OR	Harney County	Preliminary	6/28/2019
10	WA	Jefferson County	Maps Effective	6/7/2019
10	WA	Mason County	Maps Effective	6/20/2019



Region	State	County Name	Action Taken	Date
10	WA	Snohomish County	Revised Preliminary	6/28/2019

Information on “Preliminary and Revised Preliminary” Actions

For the flood risk studies shown above, FEMA gave copies of either the initial or the revised FIRM and FIS report to all communities involved. Copies are also online at <https://msc.fema.gov/portal/search> and <https://msc.fema.gov/fmfv>.

FEMA encourages local officials to widely share their copies with residents, business owners, elected officials, and others in the community. This helps in adding to or correcting non-technical information such as layout and labeling of roads, bridges, and streams, and other features. Requests to change such information can be made during the community review period, at a community meeting, and during the 90-day appeal period. Approved changes will be shown on the final FIRM and in the final FIS report.

Information on “Appeal Start” Actions

Under the National Flood Insurance Act, there are limited rights to appeal findings in the preliminary FIRM and FIS reports. Appeals can be made by owners or renters of real property within a community who believe that their property rights are adversely affected, and/or by an affected community. Important information on the process can be found in the document called “Guidance for Flood Risk Analysis and Mapping: Appeal and Comment Processing,” which can be found at fema.gov/media-library/assets/documents/34953.

Information on “LFD Issued” Actions

A statutory 90-day appeal period was held, and FEMA resolved any appeals or comments received during that period. FEMA has sent the LFD to the Chief Executive Officer of all affected communities, all individual appellants, and the State Coordinating Agency and will publish the final flood hazard information in the *Federal Register*. The updated FIRM panels will become effective six months from the date of the LFD. Final FIRM and FIS reports will officially be archived on the Flood Map Service Center (MSC) website at <https://msc.fema.gov>.

Property owners’ flood insurance rates may be affected once a FIRM becomes effective. Resources are available to help homeowners understand the importance of flood insurance and the steps they can take to reduce their rates. For additional information about flood insurance, visit <https://www.fema.gov/national-flood-insurance-program>.

To view upcoming map changes, please visit the Flood Map Changes Viewer at <https://msc.fema.gov/fmfv>.



Information on “Maps Effective” Actions

The updated FIRM and FIS report issued by FEMA have become effective. Effective FIRMs are used by communities to administer floodplain management regulations and mitigate flood damage. Local citizens use them to determine the flood zone for their property or structure. Lending institutions use them to determine whether flood insurance is required. Insurance rates may be affected for property owners once a FIRM becomes effective. To view the effective FIRMs, please visit the Map Service Center at <https://msc.fema.gov/portal/search>.

Additional flood mapping information and resources can be found on the FEMA website at fema.gov/national-flood-insurance-program-flood-hazard-mapping. In addition, the FEMA Map Information eXchange (FMIX) is available to answer questions by telephone, toll free, at 1-877-336-2627 (FEMA MAP) or by email at FEMAMapSpecialist@riskmapcds.com. A list of additional resources for information can be found in [Appendix B](#) of this Notice to Congress. If you have any questions or concerns regarding the information in this document, please contact the appropriate FEMA Regional External Affairs staff listed below.



FEMA Regional External Affairs Contact List

FEMA Region	Name	Telephone Number	Email Address
1	Dennis Pinkham	617-956-7547	Dennis.Pinkham@fema.dhs.gov
2	Kevin Sullivan	202-480-1053	Kevin.Sullivan@fema.dhs.gov
3	Nicholas Morici	267-546-6419	Nicholas.Morici@fema.dhs.gov
4	Danon Lucas	770-220-5292	Danon.Lucas@fema.dhs.gov
5	Dan Shulman	312-408-4427	Dan.Shulman@fema.dhs.gov
6	Juan Ayala Wilenda Henderson	940-898-5105	Juan.Ayala@fema.dhs.gov Wilenda.Henderson@fema.dhs.gov
7	Michael Cappannari	816-283-7080	Michael.Cappannari@fema.dhs.gov
8	Megan Floyd	303-235-4638	Megan.Floyd@fema.dhs.gov
9	Frank Mansell	510-627-7068	Frank.Mansell@fema.dhs.gov
10	Cam Rossie	425-487-4651	Camilla.Rossie@fema.dhs.gov



4. LEGAL REQUIREMENTS

The Biggert-Waters Flood Insurance Reform Act of 2012 (Biggert-Waters), as amended by the Homeowner Flood Insurance Affordability Act of 2014, directs FEMA to notify Members of Congress when constituents in their districts will be affected by a flood mapping update. Public Law 112-141, div. F, title II, §100216, July 6, 2012, 126 Stat. 927; Pub. L. 113-89, §§27, 30, Mar. 21, 2014, 128 Stat. 1033, 1034; 42 U.S.C. §4101b (d) (1)(G)(i) and (H) (2014). Under Biggert-Waters:

- The Administrator shall, not less than 30 days before issuance of any preliminary map, notify the Senators for each State affected and each Member of the House of Representatives for each congressional district affected by the preliminary map in writing of the estimated schedule for:
 - Community meetings regarding the preliminary map
 - Publication of notices regarding the preliminary map in local newspapers
 - The commencement of the appeals process regarding the map

See Biggert-Waters, as amended, at 42 U.S.C. §4101b (d)(1)(G)(i).¹

Biggert-Waters also states:

- The Administrator shall, upon the issuance of any proposed map and any notice of an opportunity to make an appeal relating to the proposed map, notify the Senators for each State affected and each Member of the House of Representatives for each congressional district affected by the proposed map of any action taken by the Administrator, with respect to the proposed map or an appeal relating to the proposed map.

See Biggert-Waters, as amended, at 42 U.S.C. §4101b (d)(1)(H).

In accordance with these requirements, this document serves as notification to Congress and provides details on studies with an estimated issuance of preliminary or revised preliminary flood maps in the current month and the next two months, and studies for which preliminary or revised preliminary flood maps and/or LFDs were issued last month.² LFDs are the actions taken by FEMA to finalize the flood hazard data shown on a preliminary FIRM. This document also provides details on statutory administrative appeal periods³ that were initiated and maps that went effective last month.

¹ FEMA is working to develop the additional administrative process required to implement 42 U.S.C. §4101b (d)(1)(G)(ii) and will update this Notice as appropriate.

² For definitions of flood map, LFD, and other terms, please refer to Appendix B.

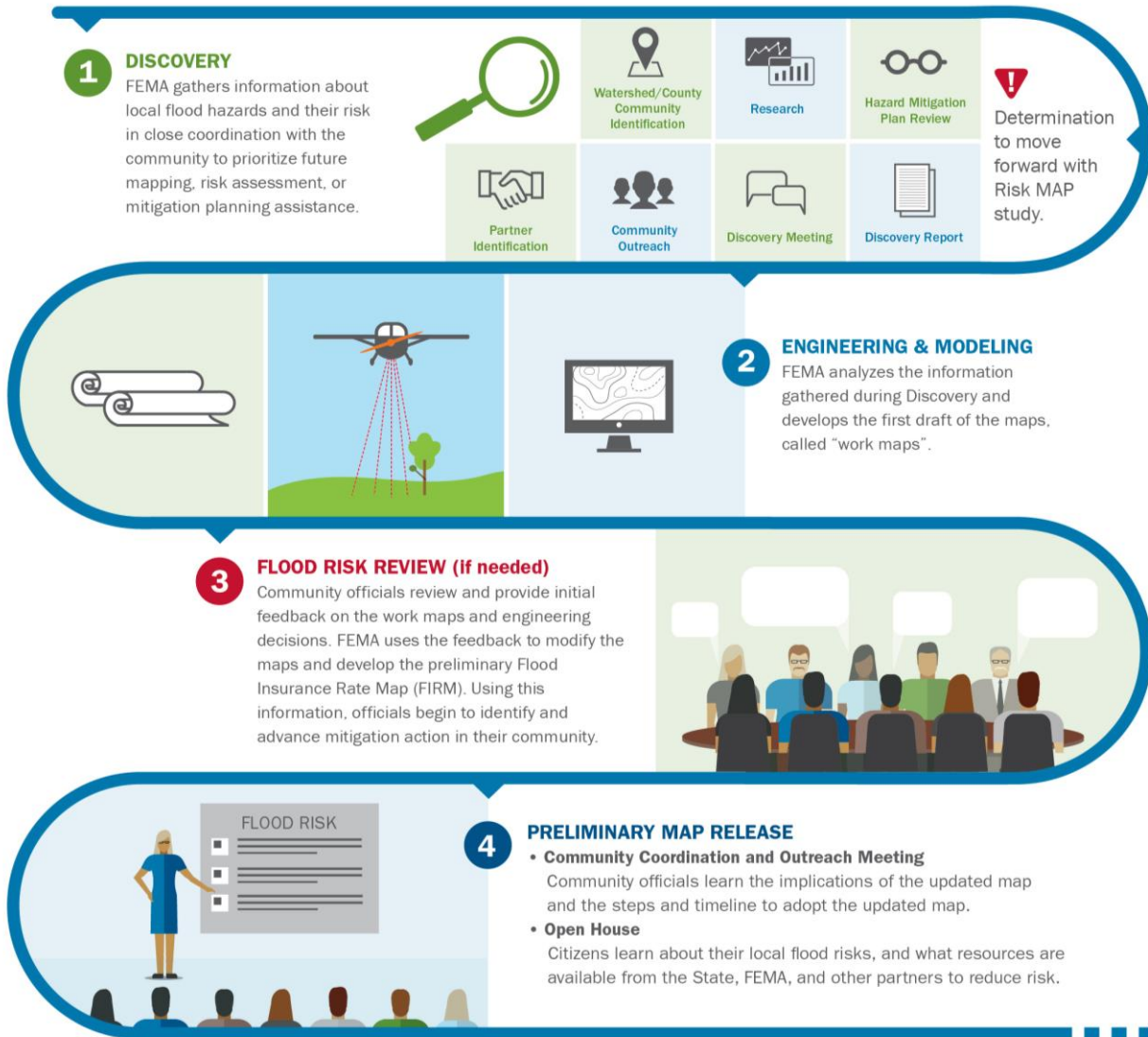
³ For more details, see "Information on 'Appeal Start' Actions" in Section 4.3.



APPENDIX A: RISK MAP PROCESS GRAPHIC

The information graphic below shows the process for flood map creation and updates.

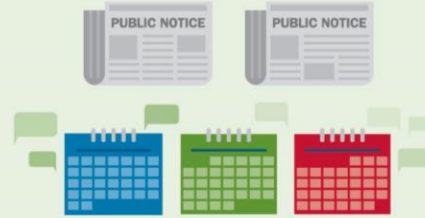
FEMA Risk MAP Process



Risk MAP Process Continued

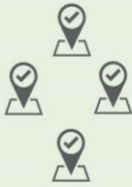
5 90-DAY APPEAL AND COMMENT PERIOD

Following two public notices, community members can submit technical data to support a request to revise the FIRM through the 90-day appeals process. All appeals, including all supporting documentation, must be submitted through the appropriate community official.



7 ADOPTION & COMPLIANCE

Communities participating in the NFIP must adopt a compliant floodplain management ordinance by the map effective date to remain in good standing as an NFIP participant.



6 LETTER OF FINAL DETERMINATION

After all appeals are resolved, FEMA sends a Letter of Final Determination, kicking off a six-month period for communities to adopt the new flood maps.



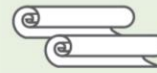
8 RESILIENCE MEETING

FEMA, State and local officials, and partners work to identify and review resilience strategies, planning options, and potential actions to reduce risk.



9 EFFECTIVE MAPS

Once effective, new maps and products are available through FEMA's Flood Map Service Center. The new data will inform flood insurance decisions and local building regulations. Community members can submit data to amend or revise the FIRM as part of a Letter of Map Change (LOMC) process.



RiskMAP
Increasing Resilience Together



APPENDIX B: RESOURCES

The following additional resources provide a better understanding of key elements of this report.

Implementation of the Biggert-Waters Flood Insurance Reform Act of 2012 and the Homeowner Flood Insurance Affordability Act

Website	fema.gov/media-library/resources-documents/collections/341
----------------	---

National Flood Insurance Program

Website	fema.gov/national-flood-insurance-program
----------------	---

Phone	888-379-9531 (toll free)
--------------	--------------------------

E-mail	floodsmart@fema.dhs.gov
---------------	--

Social Media	Twitter at @NFIPtraining
---------------------	---

Risk MAP Program

Website	fema.gov/risk-mapping-assessment-planning
----------------	---

Phone	877-336-2627 (toll free)
--------------	--------------------------

E-mail	FEMAMapSpecialist@riskmapcds.com
---------------	--

