

# Fact Sheet: Region 8 Steady State Interagency Recovery Coordination (IRC) Team

---

The Region 8 Steady State IRC team connects FEMA's network of regional federal recovery partners and their resources to state, tribal, and local partners to fulfil their unmet needs.

## What is the Role of Interagency Recovery Coordination?

Federal recovery support activities are generally guided by the [National Disaster Recovery Framework \(NDRF\)](#), a document that describes how the whole of government supports state, local, tribal, and territorial partners to recover from disasters. While FEMA manages many disaster-related programs, other funding exists across the federal enterprise, and the NDRF tasks FEMA with interagency coordination. This is the function of Interagency Recovery Coordination (IRC) teams in each FEMA region, including Region 8.

## Region 8 Steady State IRC Team Functions

The Region 8 Steady State IRC team is positioned within the Recovery Division under the Recovery Support Branch. The team coordinates recovery support for problems, issues, and needs that are not covered by traditional disaster recovery programs, including those within the FEMA disaster recovery enterprise. While the IRC itself does not control funding or resources, its job is to act as a hub of information and contacts. It helps stakeholders narrow down their need or request, then finds information and/or a point of contact (typically a federal partner/agency) who can offer support.

The Region 8 Steady State IRC team has four strategic objectives:

1. **Maintain Relationships** - Develop and maintain strong working relationships with regional recovery partners, including federal recovery partners, state and tribal recovery partners, internal FEMA program areas, and non-governmental organizations and private sector recovery partners.
2. **Support Disasters** - Provide enhanced support to stakeholders, during steady state and deployed operations, by leveraging existing recovery partner relationships and resources.
3. **Understand Resources** - Build a clear internal understanding of technical, financial, and other assistance available across the FEMA enterprise as well as from federal partners active in disaster recovery.
4. **Build Capacity** - Increase recovery coordination capacity within FEMA and among regional recovery partners through training, exercises, and regular information dissemination.



# FEMA

## Who are the Core Recovery Partners?

The IRC's core recovery partners are the agencies which coordinate the six Recovery Support Functions (RSF) as described by the NDRF. The table below describes each RSF partner and the key functions and support they provide in steady state as well as disaster operations.

Recovery Support Function (RSF) and Coordinating Agency	Key Functions
<a href="#">Community Assistance (CA)</a> - FEMA	<ul style="list-style-type: none"> <li>▪ Restore and strengthen state, local, tribal, and territorial governments' ability to plan for recovery.</li> <li>▪ Engage the community in recovery planning efforts.</li> <li>▪ Build capacity for local recovery plan implementation and management.</li> </ul>
<a href="#">Infrastructure Systems (IS)</a> - USACE	<ul style="list-style-type: none"> <li>▪ Provide technical assistance to all levels of government in identifying critical infrastructure systems and support effective community planning and redevelopment efforts.</li> <li>▪ Identify legal and policy requirements that may impact infrastructure repair, recovery, and mitigation.</li> </ul>
<a href="#">Health and Social Services (HSS)</a> - HHS	<ul style="list-style-type: none"> <li>▪ Assess health and social services impacts and recovery needs, and work with the whole community to establish HSS recovery priorities and timelines.</li> <li>▪ Restore health care, public health, and social services functions.</li> <li>▪ Restore and improve the resilience of local health care systems and promote the independence and well-being of communities.</li> </ul>
<a href="#">Economic (ECON)</a> - EDA	<ul style="list-style-type: none"> <li>▪ Integrate the expertise and resources of the federal government to assist state, local, tribal, and territorial partners, as well as private sector businesses, to rebuild impacted economies and improve economic resilience.</li> </ul>
<a href="#">Natural and Cultural Resources (NCR)</a> - DOI	<ul style="list-style-type: none"> <li>▪ Support the protection of natural and cultural resources during the disaster recovery process, and to restore those resources in a way that is consistent with community priorities and complies with national environmental and historic preservation regulations.</li> <li>▪ Provide funding and technical assistance to support NCR priorities.</li> <li>▪ Integrate environmental staff knowledgeable in natural resources and sustainability into recovery planning efforts early.</li> </ul>
<a href="#">Housing</a> - HUD	<ul style="list-style-type: none"> <li>▪ Identify strategies to strengthen the housing market and improve quality and quantity of available housing.</li> <li>▪ Integrate disaster mitigation measures into community design, development, and recovery planning to improve resilience.</li> </ul>

Additional key partners include state recovery officers, other federal agencies, philanthropic and non-governmental organizations, and internal cross-divisional partners within FEMA Region 8.

## Agency Acronym List

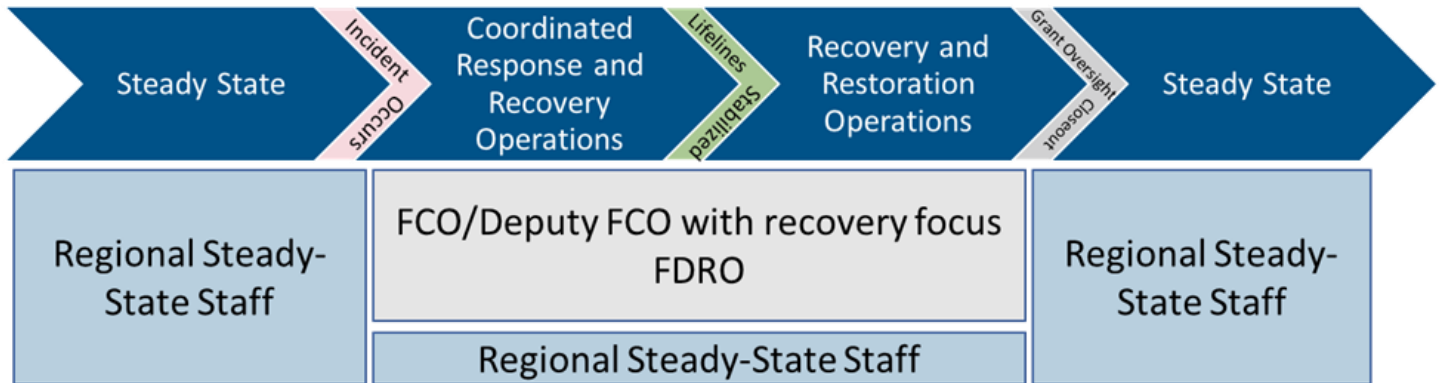
The following is a list of agency acronyms from the Recovery Support Function and Coordinating Agency table, above.

FEMA	Federal Emergency Management Agency
USACE	U.S. Army Corps of Engineers
HHS	U.S. Department of Health & Human Services
EDA	U.S. Economic Development Administration
DOI	U.S. Department of the Interior
HUD	U.S. Department of Housing and Urban Development

## Steady State IRC Support for Declared Disasters

### How does the Steady State IRC team support declared disasters?

- Immediately after a disaster declaration, the Steady State IRC team establishes communications with the Regional Response Coordination Center (RRCC) to maintain situational awareness and begins coordinating staff deployments to the deployed IRC team that is embedded in the Joint Field Office (JFO).
- Once a Federal Disaster Recovery Officer (FDRO) is assigned to the disaster, the Steady State IRC provides them with established IRC tools, resources, and state information, as well as connects them with regional interagency contacts and partners. While deployed operations are being stood up, the Steady State IRC will respond to interim Requests for Information and Resources (RFI/RFR).
- As disaster operations wind down and the JFO closes, any unfinished or long-term recovery projects will transition back to the Steady State IRC team, and deployed IRC staff will demobilize.
- Throughout the disaster lifecycle, the Steady State IRC team provides situational awareness to its federal partners. This often includes information about potential resource gaps and unmet needs that require enhanced or long-term recovery support, as well as recovery needs analysis.



**Figure 1.** This diagram shows the flow of events before, during, and after a disaster, and how Steady State IRC support is integrated into the disaster. As the grant lifecycle closes and operations wind down, long term and unfinished projects transition back to the regional Steady State IRC team.

## Additional Resources

Recovery and Resilience Resource Library: <https://www.fema.gov/emergency-managers/practitioners/recovery-resilience-resource-library>, (public facing, no account required)

Roadmap to Federal Resources for Disaster Recovery: <https://www.fema.gov/emergency-managers/practitioners/roadmap-resource-library> (public facing, no account required)

Hazard Specific Community Resilience Resource Fact Sheets:

- Flood: [https://www.fema.gov/sites/default/files/documents/fema\\_r8-recovery-resources-flood.pdf](https://www.fema.gov/sites/default/files/documents/fema_r8-recovery-resources-flood.pdf)
- Wildfire: [https://www.fema.gov/sites/default/files/documents/fema\\_r8-recovery-resources-wildfire.pdf](https://www.fema.gov/sites/default/files/documents/fema_r8-recovery-resources-wildfire.pdf)
- Drought: [https://www.fema.gov/sites/default/files/documents/fema\\_r8-recovery-resources-drought.pdf](https://www.fema.gov/sites/default/files/documents/fema_r8-recovery-resources-drought.pdf)
- Additional hazard fact sheets will be available in the future.

## Contact Information

Region 8 Steady State IRC Email: [R8-FEMA-IRC@fema.dhs.gov](mailto:R8-FEMA-IRC@fema.dhs.gov)