

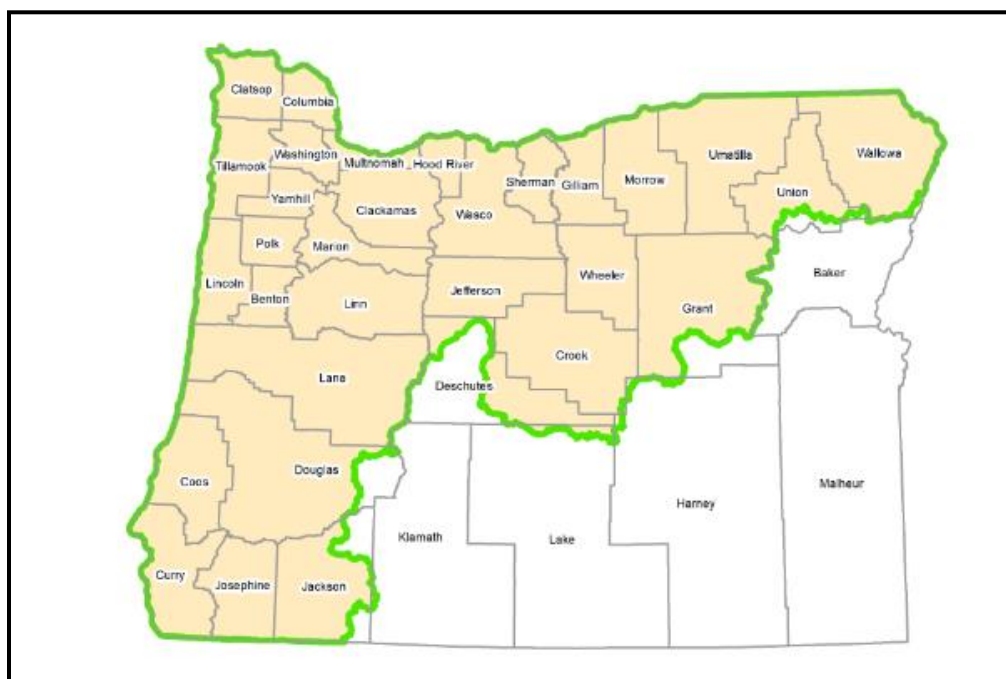
Introduction

The Oregon National Flood Insurance Program (NFIP) Endangered Species Act (ESA) integration performance standards apply to communities that are 1) located in the Oregon plan area, 2) located within the mapped special flood hazard area (SFHA), and 3) within a community participating in the NFIP. This document provides instructions for determining if your location of interest is subject to the Oregon NFIP-ESA integration performance standards based on these three considerations. Applicability is not fixed in time. Updates to SFHA delineations or communities joining or withdrawing from the NFIP could result in changes in applicability for a specific location.

Directions to Determine if a Location is in the Plan Area

The plan area for NFIP-ESA integration in Oregon includes the area encompassed by the green line on Figure 1. The plan area boundary is generally defined by the boundaries of six NMFS Salmon and Steelhead Recovery Domains within the State of Oregon: Oregon Coast, Southern Oregon/Northern California Coast, Willamette River, Lower Columbia River, Middle Columbia River, and Snake River.

Figure 1. Plan Area Boundary for NFIP-ESA Integration



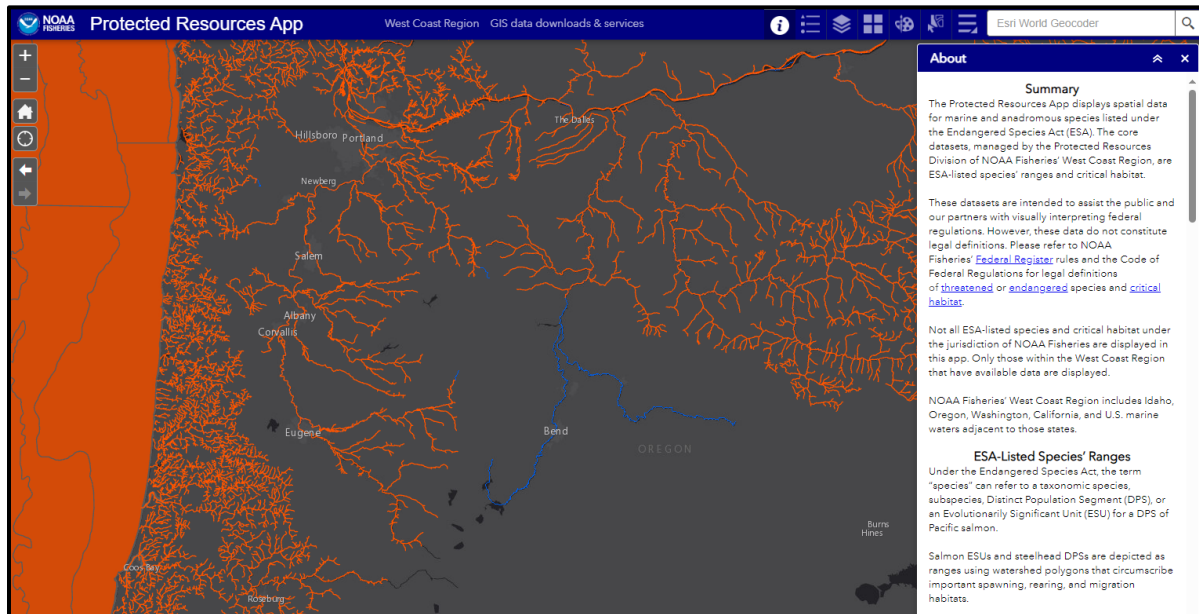
If the location you are interested in is close to the green line, you can use the directions below to determine if the specific location of interest is inside or outside of the plan area.

NFIP-ESA Integration in Oregon
Determining if a Location is Within the Plan Area
February 2024

Step 1

Open NOAA's Recovery Domain map: [Protected Resources App \(noaa.gov\)](https://www.noaa.gov/protected-resources-app). Figure 2 shows a typical view of the site.

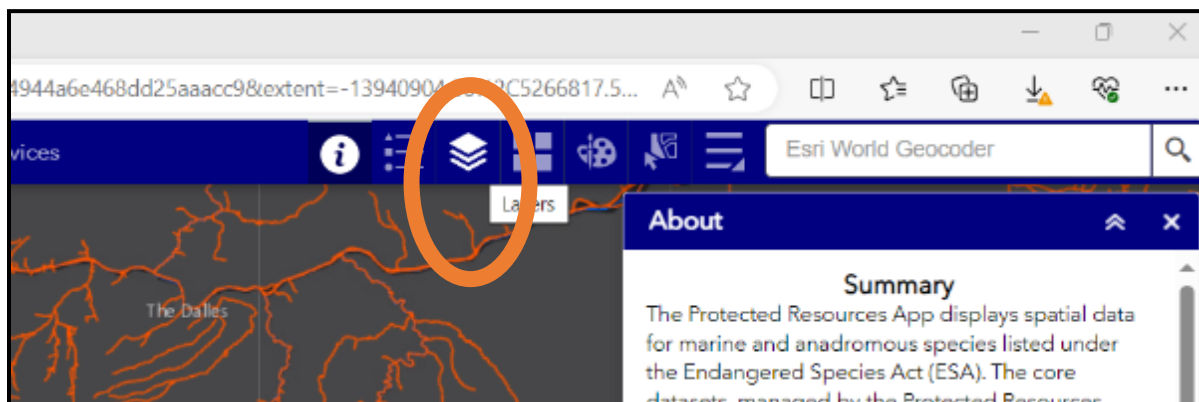
Figure 2. NOAA's Recovery Domain Map



Step 2

Click on the layers symbol that looks like a stack of three squares. This is indicated by the orange oval in Figure 3.

Figure 3. Layers Symbol on NOAA Website



FEMA



OR EIS website
<https://www.fema.gov/about/organization/>

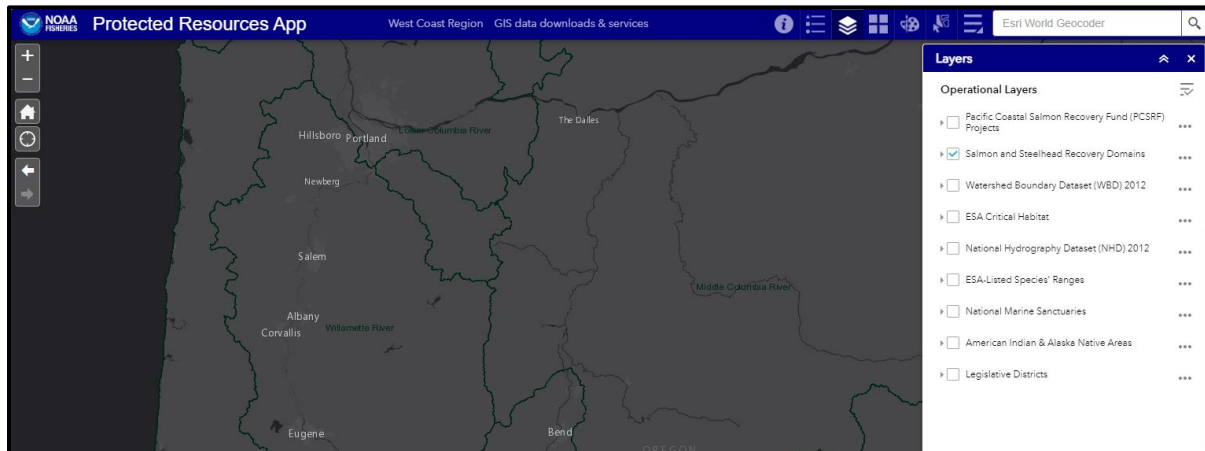


NFIP-ESA Integration in Oregon
Determining if a Location is Within the Plan Area
February 2024

Step 3

Check “Salmon and Steelhead Recovery Domains” and uncheck any other layers that may be checked. See Figure 4 as an example.

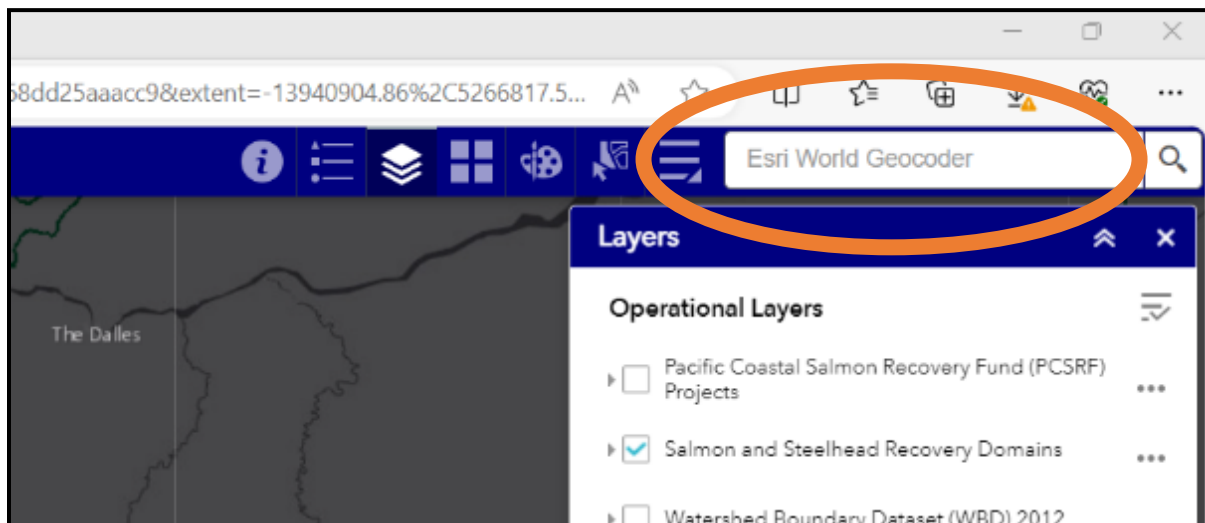
Figure 4. Salmon and Steelhead Recovery Domains Layer



Step 4

Find the Esri World Geocoder in the upper right portion of the screen. The Esri World Geocoder is indicated by the orange oval in Figure 5.

Figure 5. Esri World Geocoder



Step 5

Enter the location of interest, address, or town in the Esri World Geocoder field. Sisters, OR is used as an example in Figure 6, as indicated by the orange oval.



FEMA



OR EIS website
<https://www.fema.gov/about/organization/>



NFIP-ESA Integration in Oregon
Determining if a Location is Within the Plan Area
February 2024

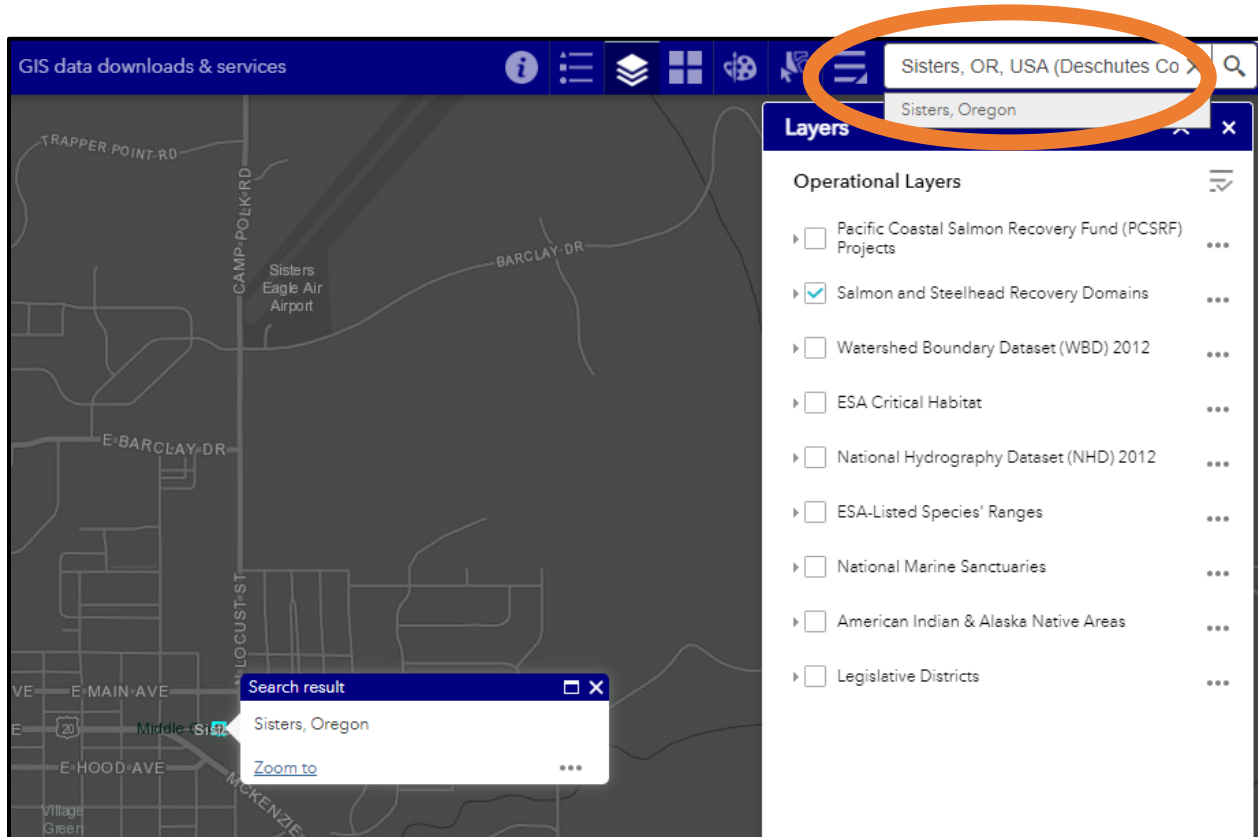
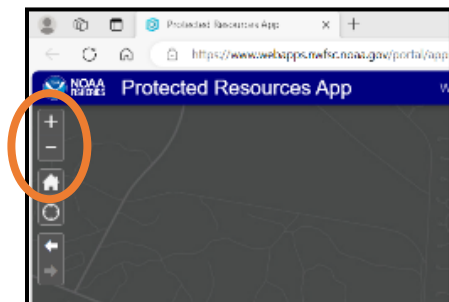


Figure 6. Location of Interest - Sisters, OR Example

Step 6

Using the minus button or the scroll bar, zoom out to see if the location of interest is within the boundary of a Salmon and Steelhead Recovery Domain. The minus button is located in the upper left corner of the screen, as indicated by the orange oval in Figure 7.

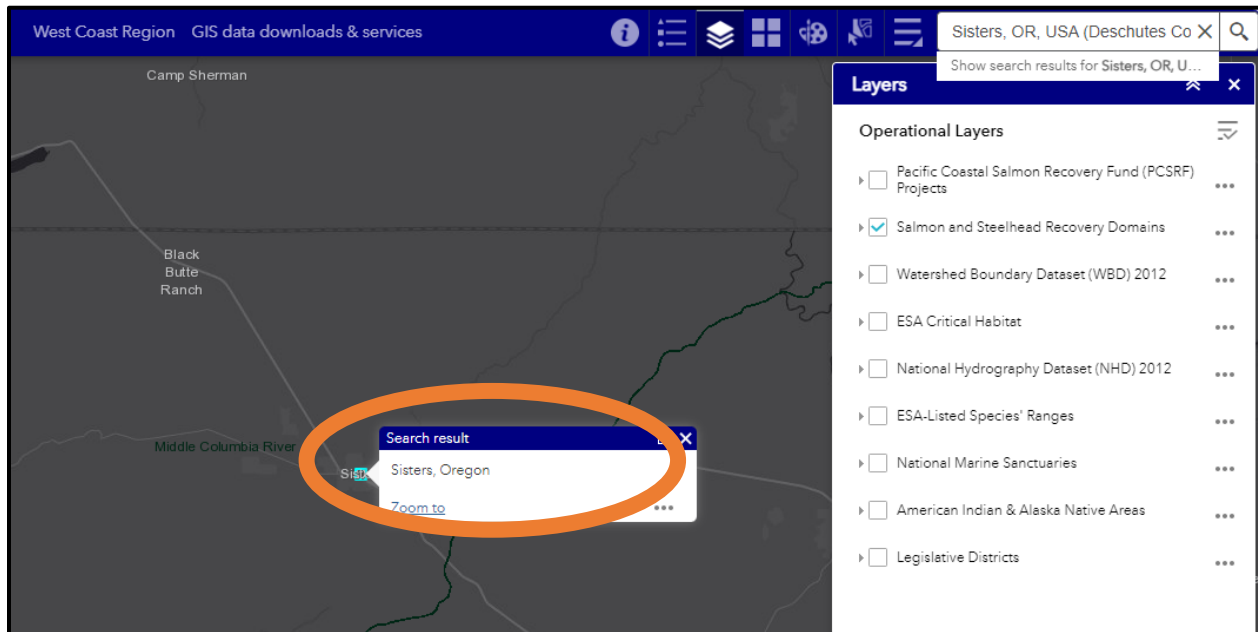
Figure 7. Zoom Out Button on NOAA Website



NFIP-ESA Integration in Oregon
Determining if a Location is Within the Plan Area
February 2024

Figure 8 shows the location (Sisters, OR in this example) from a zoomed-out perspective. Sisters, OR is shown as a small light blue square surrounded by the orange oval.

Figure 8. Sisters, OR Example Zoomed Out



Step 7

If it is still difficult to tell if your location of interest is located within a Salmon and Steelhead Recovery Domain, you can confirm by clicking on the screen at your location of interest. When you click the screen, an information box will pop up (see Figure 9 for Sisters, OR example). The information box will either identify the recovery domain or it will say "no information" which indicates your location is outside of the recovery domains.

Figure 9 shows that Sisters, OR is located in the Middle Columbia River Recovery Domain, identified with a blue-green outline. Because Sisters, OR is located in a recovery domain, it is also located in the plan area.



FEMA



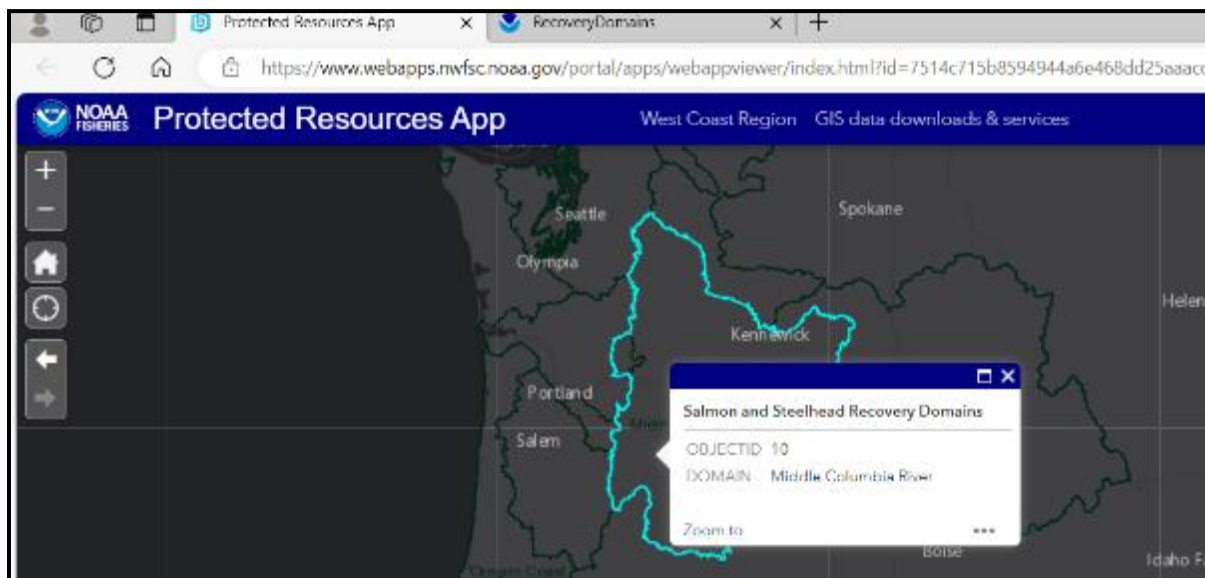
OR EIS website

<https://www.fema.gov/about/organization/>



NFIP-ESA Integration in Oregon
Determining if a Location is Within the Plan Area
February 2024

Figure 9. Information Box Identifying Recovery Domain for Sisters, OR

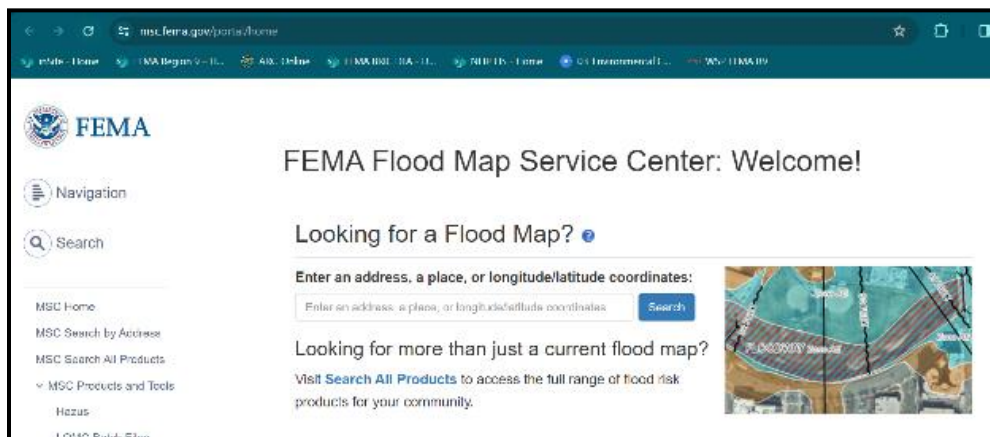


Directions to Determine if a Location is in the Special Flood Hazard Area

Step 1

To determine if a location of interest is in the current effective SFHA, access the FEMA Flood Map Service Center at [FEMA Flood Map Service Center | Welcome!](https://www.fema.gov/peterson/home) See Figure 10 for reference.

Figure 10. FEMA Flood Map Service Center



Step 2

Enter the location of interest in the Looking for a Flood Map? search bar indicated by the orange oval below. Click search. Sisters, OR is used as an example in Figure 11.



FEMA



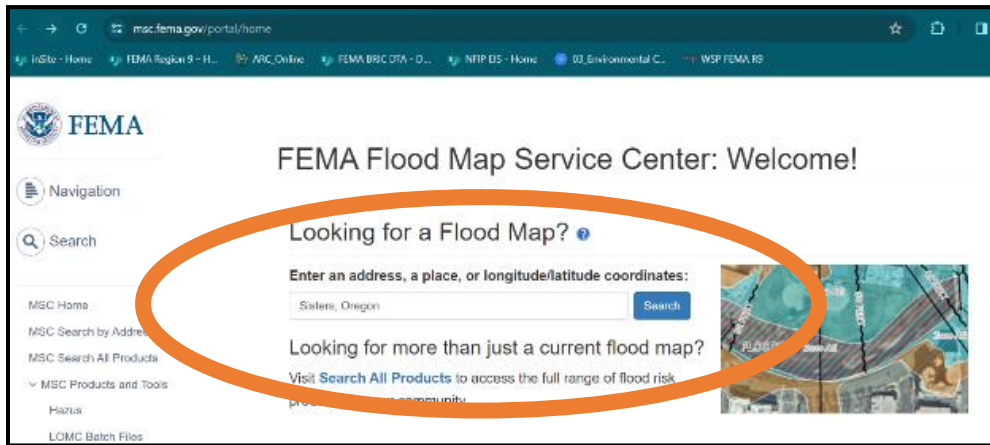
OR EIS website

<https://www.fema.gov/about/organization/>



February 2024

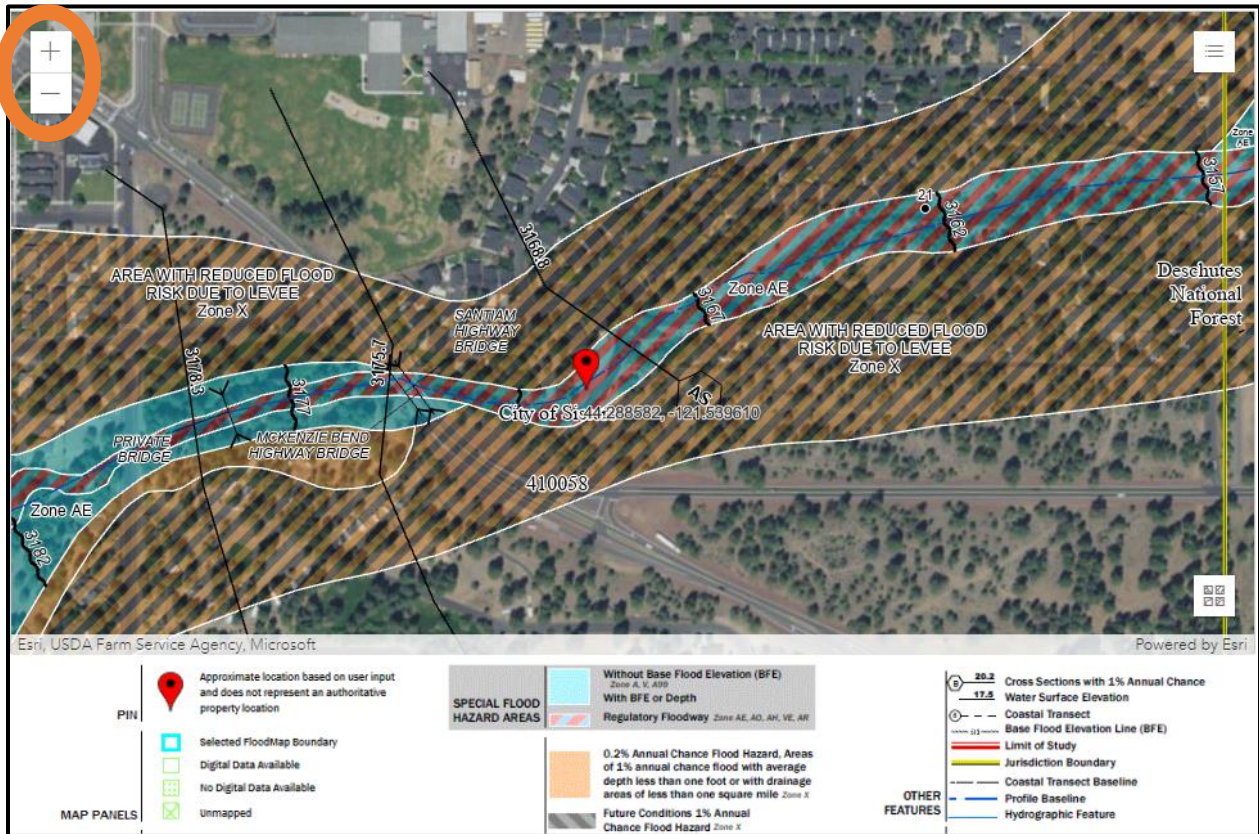
Figure 11. Looking for a Flood Map? Search Bar



Step 3

Scroll down on the page until you see the map with your location identified. Using the plus or minus buttons at the upper left portion of the map, zoom in or out as needed. The plus and minus buttons are indicated by the orange oval in Figure 12.

Figure 12. Zooming In or Out on the Location Map



FEMA



OR EIS website

<https://www.fema.gov/about/organization/>

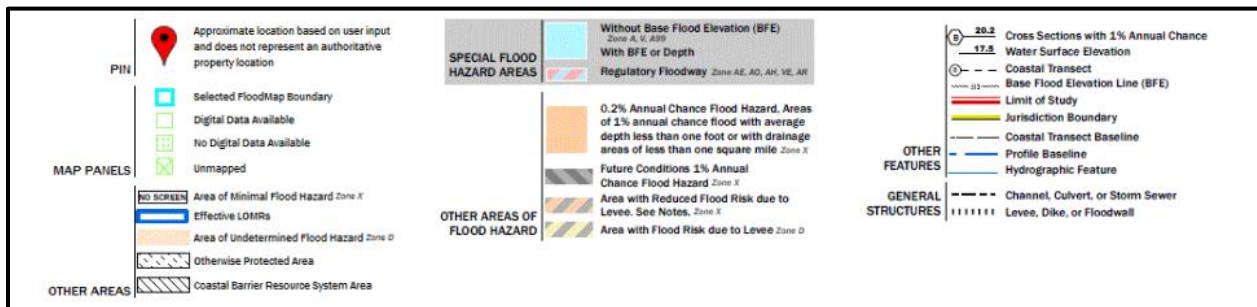


NFIP-ESA Integration in Oregon
Determining if a Location is Within the Plan Area
February 2024

Step 4

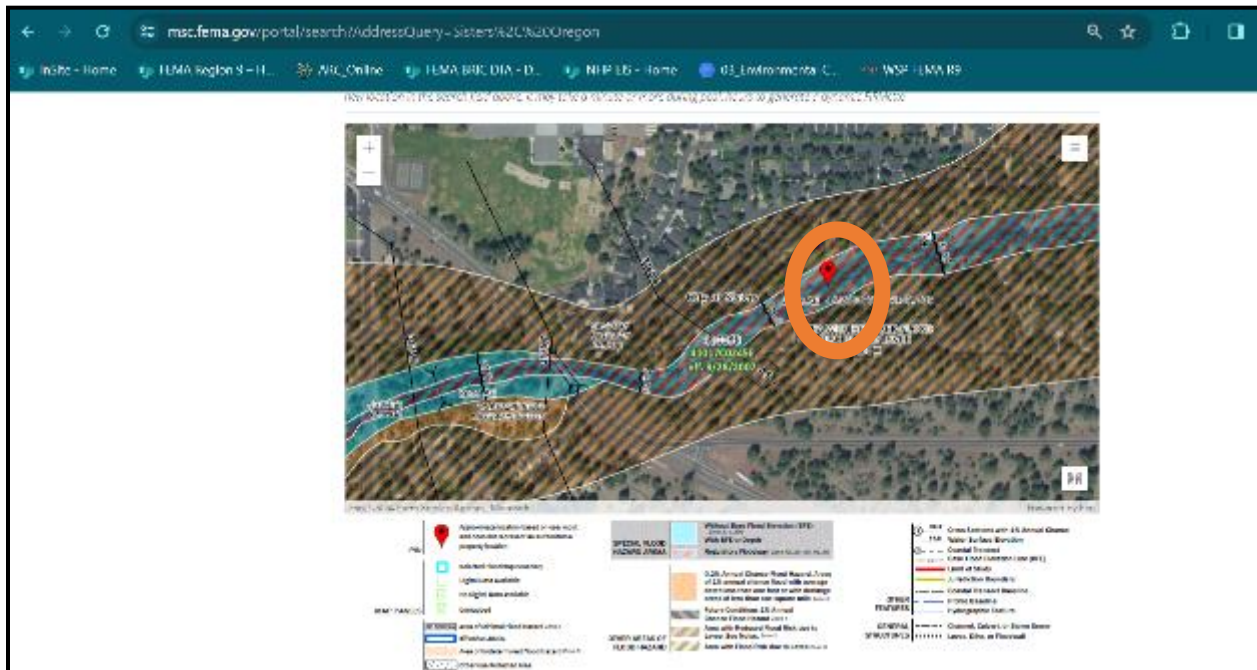
Compare your location of interest to the legend below the map. The SFHA is indicated as either a light blue area, or a red and blue hashed area. If your location is within the light blue or red and blue hashed area, it is located within the SFHA. Figure 13 shows the legend. The areas identified within the SFHA are highlighted in grey in the legend.

Figure 13. Special Flood Hazard Area Indicated in Legend



The Sisters, OR example location is depicted in Figure 14. The location is within the red and blue hashed area, which means that it is within the SFHA. In Figure 14, the location is indicated by the oval orange.

Figure 14. Sisters, OR Example Location in the Special Flood Hazard Area



FEMA



OR EIS website
<https://www.fema.gov/about/organization/>



Directions to Determine if a Location is Within a National Flood Insurance Program Participating Community

To determine if a location of interest is within an NFIP participating community, access the FEMA Community Status Book Report at <https://www.fema.gov/cis/OR.html>. If your community is listed in the community status book report, it is a NFIP participating community. If you have any additional questions about NFIP participation, reach out to your local floodplain administrator.

Summary

The Oregon NFIP-ESA integration performance standards apply to locations of interest that are: 1) located in the Oregon plan area, 2) located within the mapped special flood hazard area (SFHA), and 3) located within a community participating in the NFIP. These directions help to determine if a location of interest is within the plan area, within the SFHA, and within a NFIP participating community. If all three of these considerations are true for your location of interest, the Oregon NFIP-ESA integration performance standards are applicable. If one or more of the three considerations is not true for your location of interest, the Oregon NFIP-ESA integration performance standards do not apply.



FEMA



OR EIS website

<https://www.fema.gov/about/organization/>

