

Hurricane Evacuation Studies and Evacuation Planning

Hurricane Evacuation Studies (HES) assess the vulnerability of a population to hurricane threats and provide information and critical planning factors that guide state, local, tribal, and territorial governments in hurricane evacuation and response plans. These critical planning factors support the National Hurricane Program (NHP) mission of using analytics to support informed decision making and saving lives.

The NHP provides technical assistance in partnership with the U.S. Army Corps of Engineers (USACE) to conduct HES in more than 20 hurricane prone states and territories. HESs are federally supported, state-managed, and locally-executed. The key to a successful HES is that it is coordinated and informed by state and local data, analysis, and expertise.

HES Components

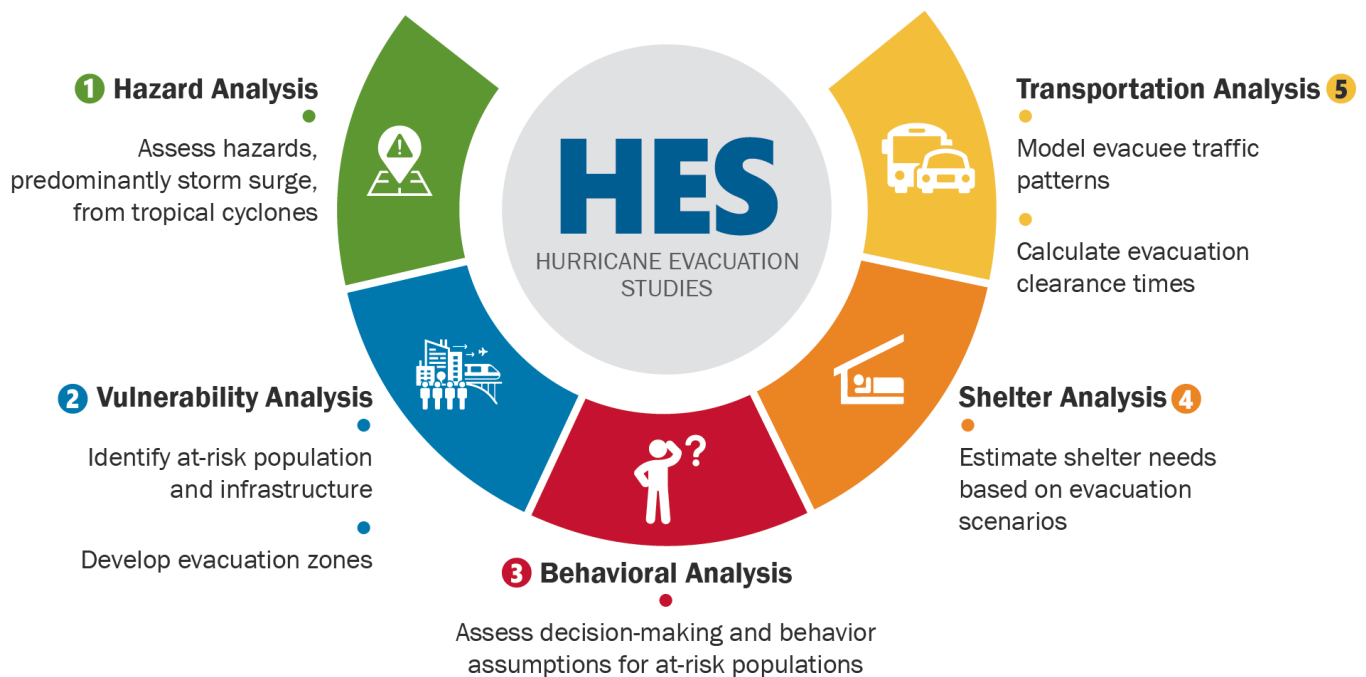


Figure 1: HES Components



The HES process produces several important deliverables, including hurricane evacuation zones and evacuation clearance times. Clearance times estimate the number of hours it takes to move a threatened population to safety given various factors.

HES documents, evacuation zones, and clearance times are available in HURREVAC (<https://hurrevac.com/>), the NHP hurricane evacuation decision support tool, free for government emergency managers. Emergency managers can use the “Evacuation Timing” features in HURREVAC to calculate clearance times, build out decision timeline actions, and deduce evacuation start times. Evacuation start times are calculated by subtracting produced clearance times from the arrival time of tropical-storm-force winds.

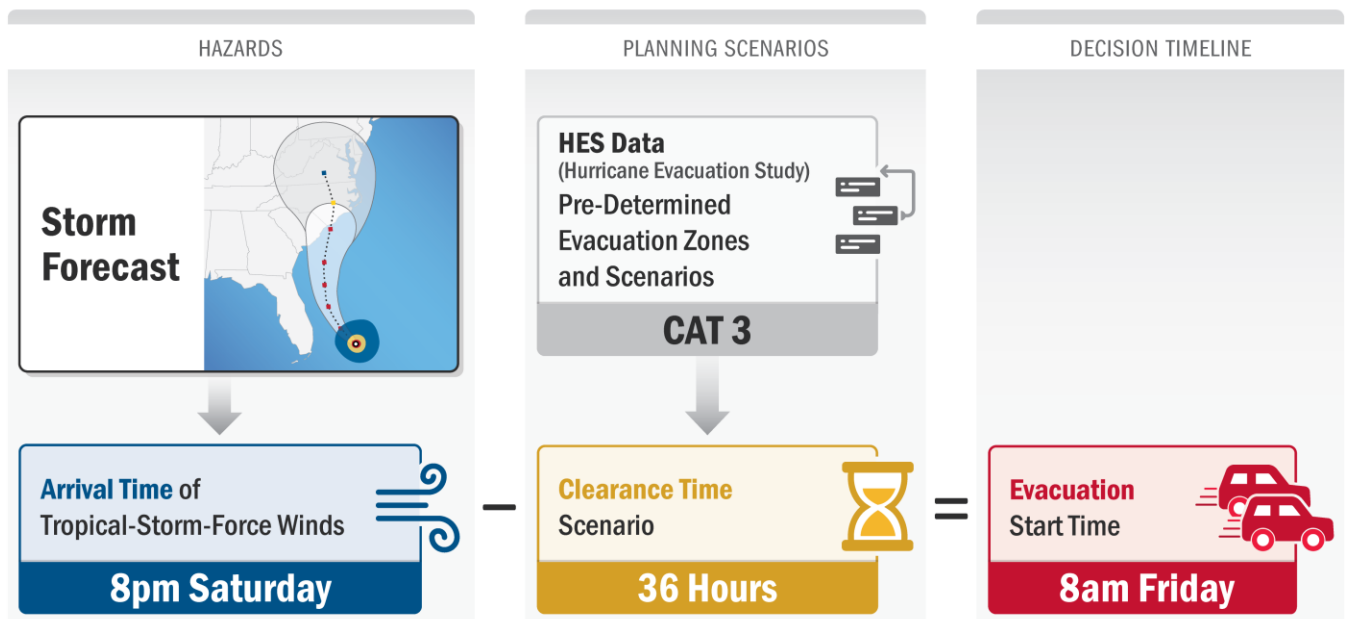


Figure 2: Evacuation Start Time Calculation

HES and Evacuation Planning plays a vital role in the program, producing valuable inputs for other program components. It is one of the seven components of the NHP: Storm Surge Risk Products; Hurricane Evacuation Studies and Evacuation Planning; HURREVAC; Training for Emergency Managers; Hurricane Liaison Team Operational Decision Support; Stakeholder Engagement; and Post-Storm Assessments.

For more information about the National Hurricane Program, visit [Hurricane Planning and Response | FEMA.gov](https://www.fema.gov/hurricane-planning-and-response) or email NHP@fema.dhs.gov.