

# IPAWS Overview

Wade Witmer

Deputy Director

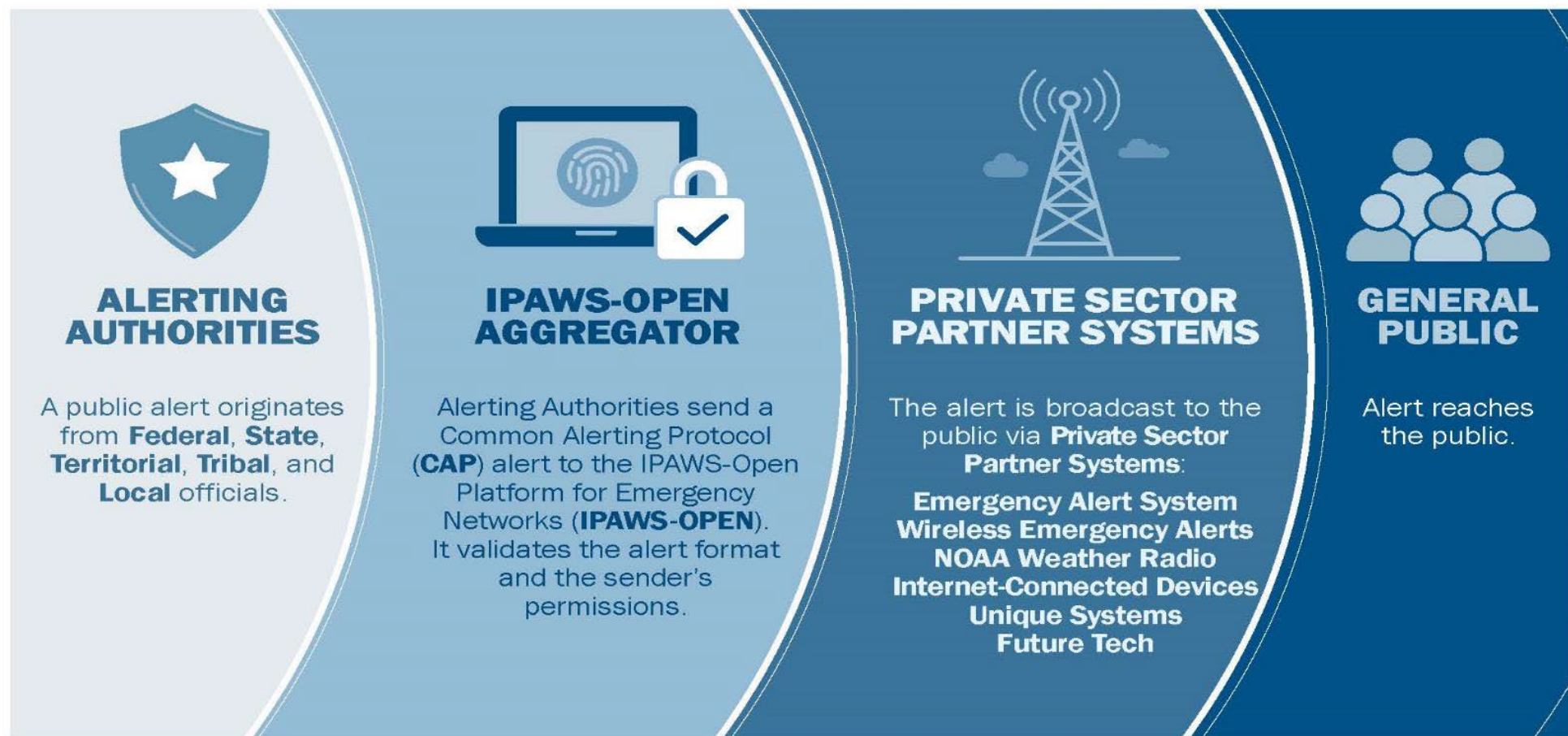
Integrated Public Alert & Warning System

FEMA National Continuity Programs



FEMA

# IPAWS: National system for local public alert and warning



**FEMA**

# IPAWS = *broadcast, connectionless, technologies*

---

- ***Broadcast protocols:***

- ***not affected by network congestion***
- ***don't contribute to network congestion***

- EAS
  - Broadcast to all radio, TV, cable
  - Large geographic coverage areas
- WEA
  - Broadcast to all phones
  - Small geographic coverage areas
- NOAA Weather Radio
  - Broadcast to all NOAA Weather Radios
  - Medium geographic coverage areas



**FEMA**



# When is an SLTT permitted to use IPAWS?

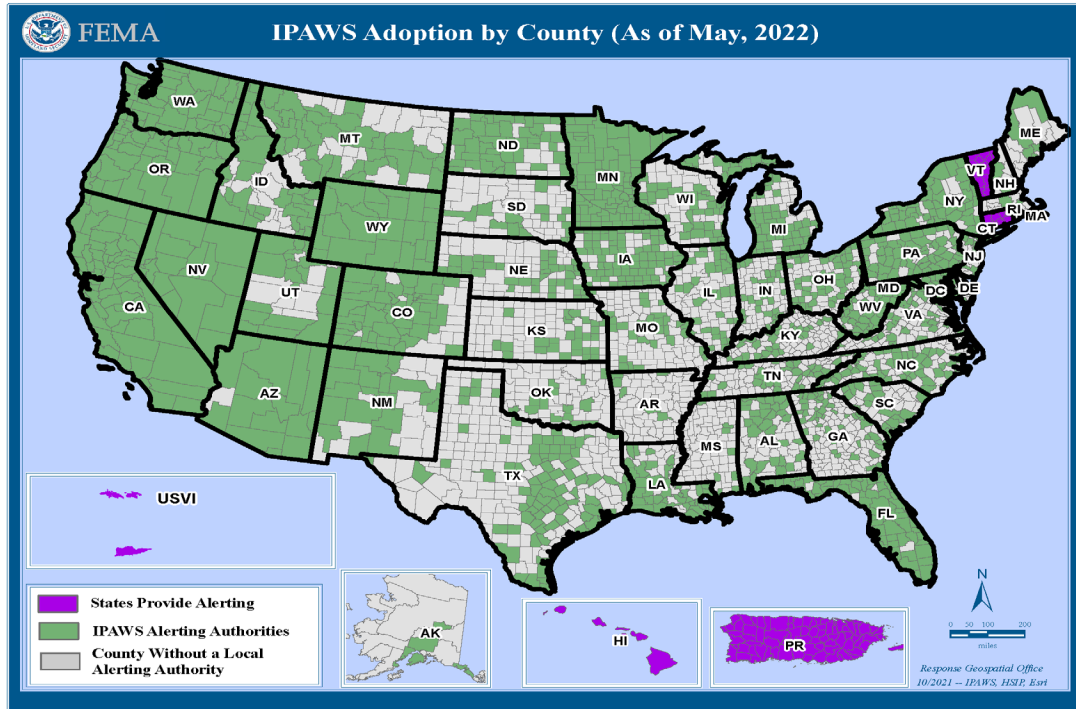


**Whenever the local authority decides IPAWS is the best way to to communicate emergency information to the public**



**FEMA**

# FEMA wants you to be an effective IPAWS user!



FEMA wants all local authorities to have access to IPAWS

- Because all emergencies start local!
- People are more likely to heed warning and protective action guidance from their local authority
- Timely alerts and local protective action guidance to people during an emergency helps mitigate the impact of disasters
- WEA via IPAWS, is the most effective method of quickly getting an emergency message to people



FEMA

# Questions?

Wade Witmer

FEMA IPAWS Deputy Director

[wade.witmer@fema.dhs.gov](mailto:wade.witmer@fema.dhs.gov)



# FEMA