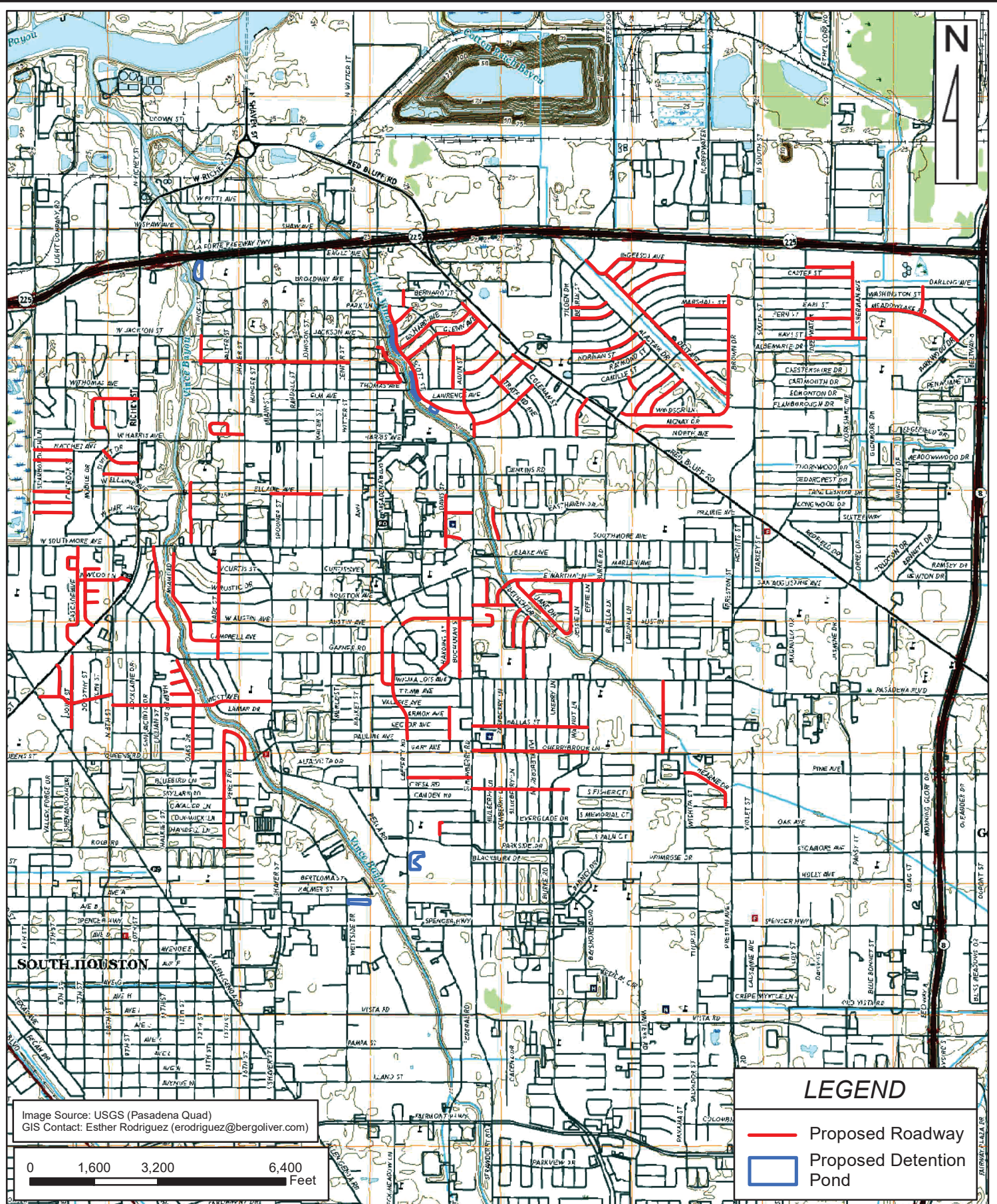
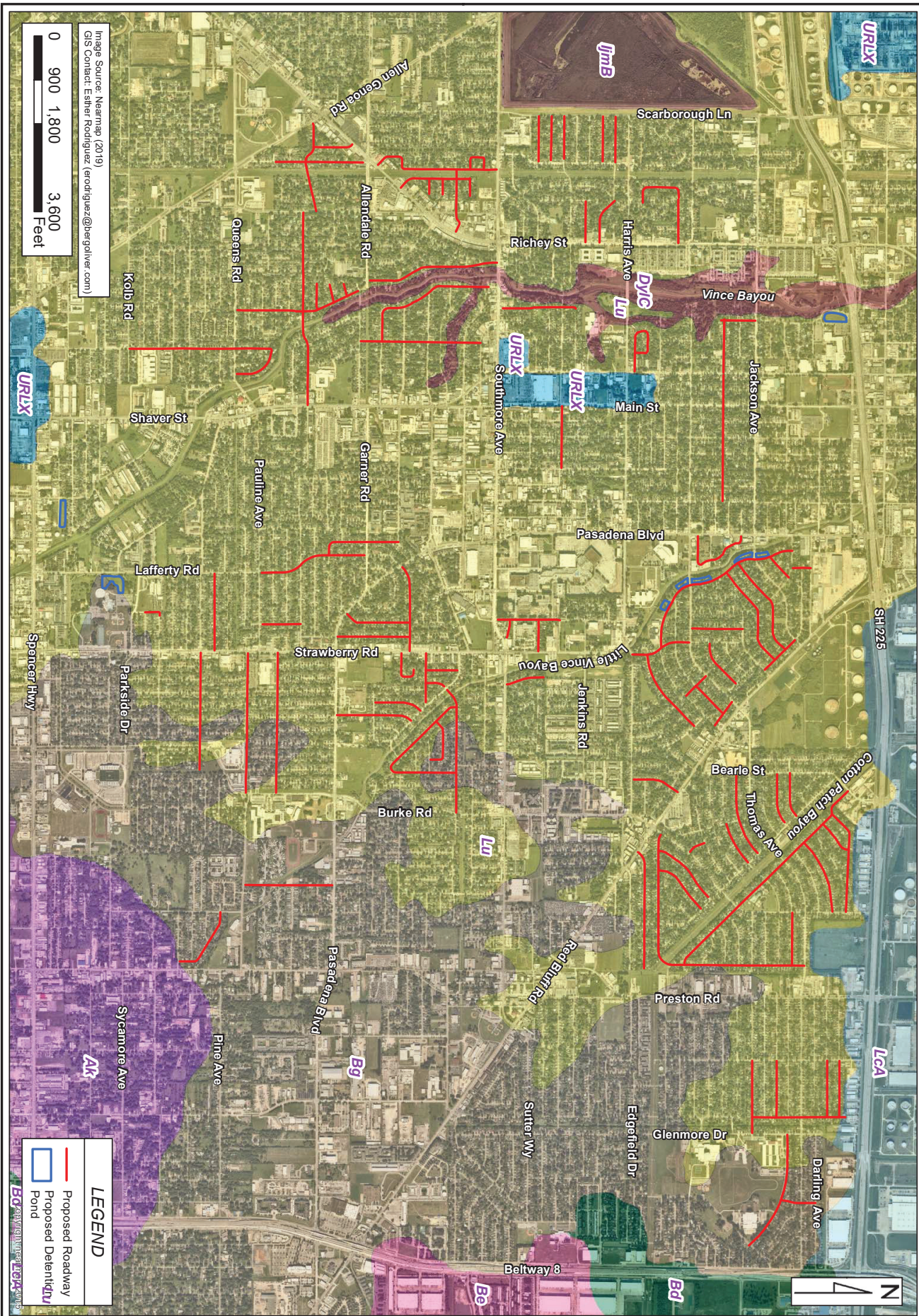


APPENDIX C

TOPOGRAPHIC, SOILS, FLOODPLAIN, NWI, and WETLAND DETERMINATION AND CLASSIFICATION MAPS





NRCS SOILS MAP

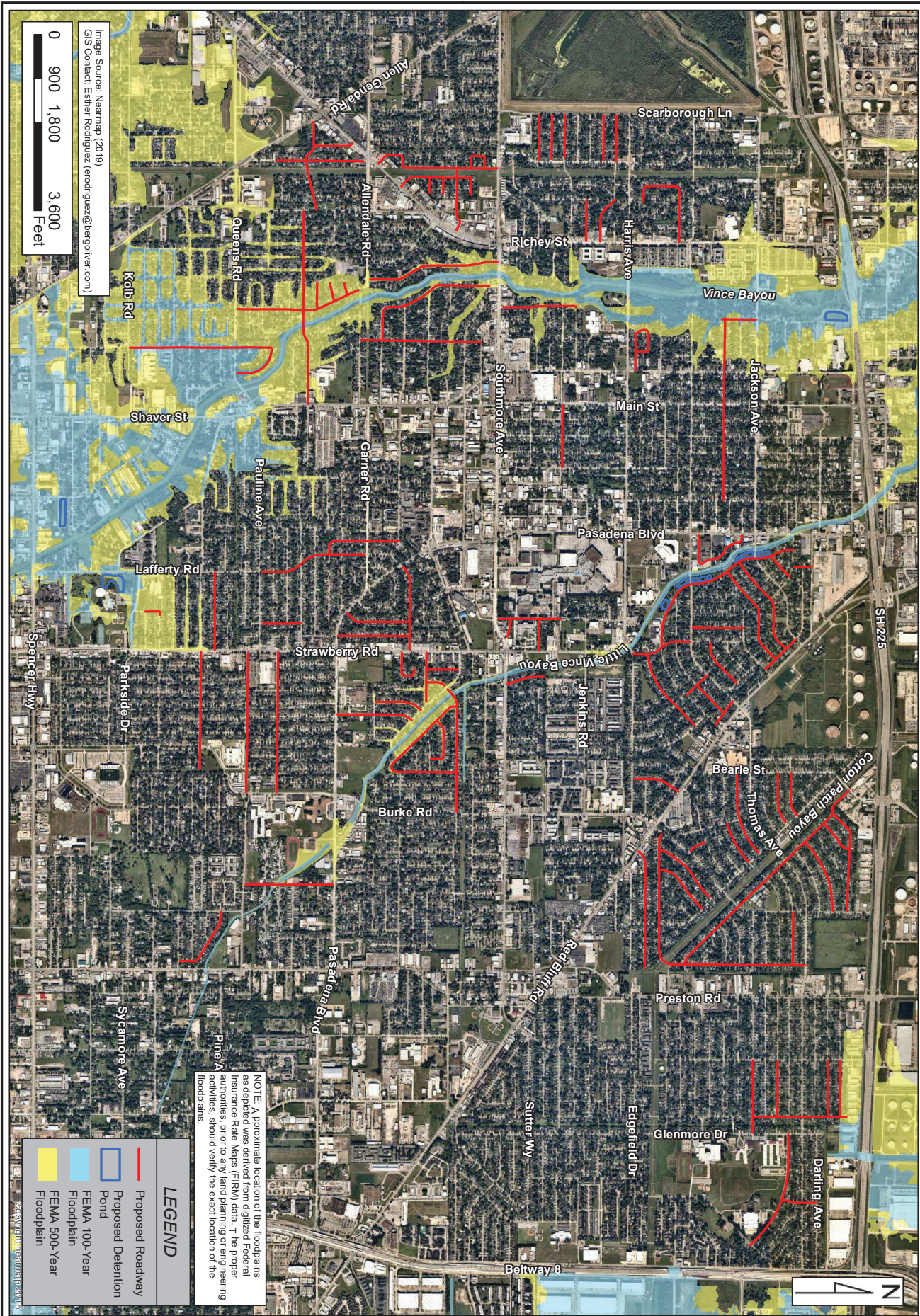
Project #: 11165
 For: City of Pasadena
 Location: From SH 225 South to Spencer Hwy and from Allen Genoa Road East to BW 8; Harris County, Texas

REVISIONS
 7/21/19 by MER
 8/19/19 by MER

BERG•OLIVER ASSOCIATES, INC.

ENVIRONMENTAL SCIENCE & LAND USE CONSULTANTS
 14701 ST. MARY'S LANE, SUITE 400
 HOUSTON, TEXAS 77079 PHONE (281)589-0898 <http://www.bergoliver.com>





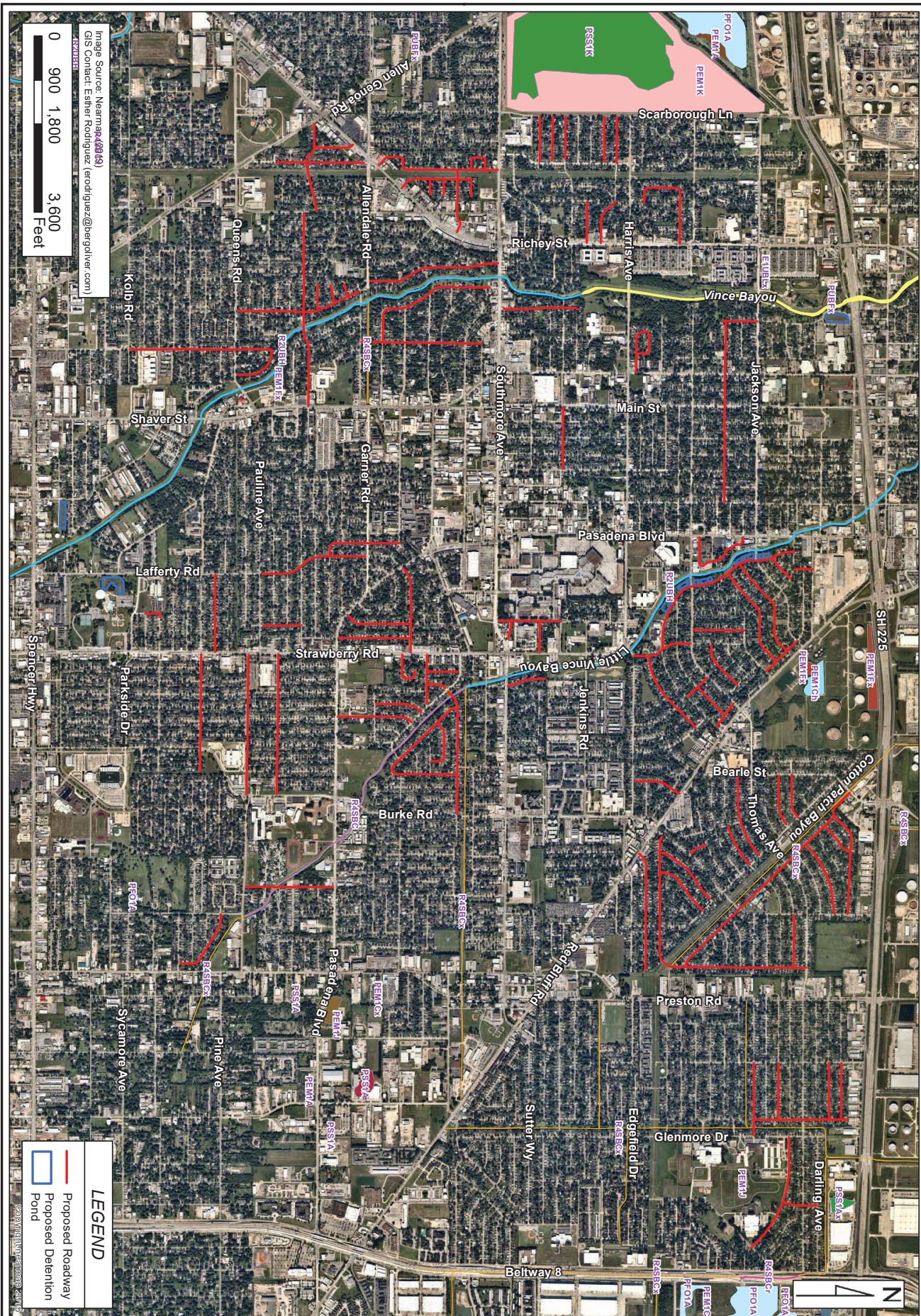
FEMA FLOODPLAIN MAP

Project #: 11165
 For: City of Pasadena
 Location: From SH 225 South to Spencer Hwy and from Allen Genoa Road East to BW 8; Harris County, Texas

REVISIONS
7/21/19 by MER
8/19/19 by MER

BERG•OLIVER ASSOCIATES, INC.
 ENVIRONMENTAL SCIENCE & LAND USE CONSULTANTS
 14701 ST. MARY'S LANE, SUITE 400
 HOUSTON, TEXAS 77079 PHONE (281)589-0898 <http://www.bergoliver.com>





NATIONAL WETLANDS INVENTORY (NWI) MAP

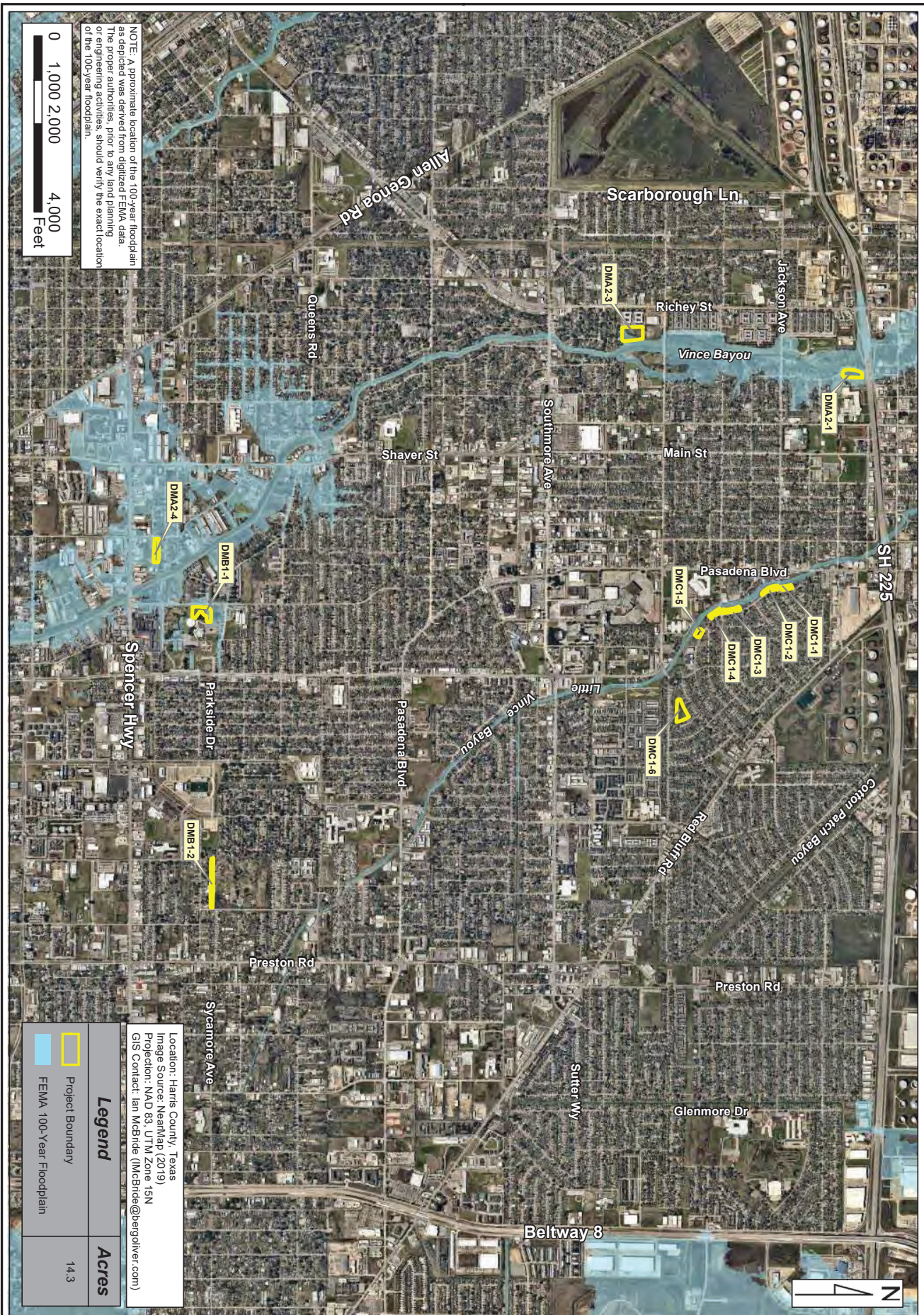
Project #: 11165
 For: City of Pasadena
 Location: From SH 225 South to Spencer Hwy and from Allen Genoa Road East to BW 8; Harris County, Texas

REVISIONS
 7/21/19 by MER
 8/19/19 by MER

BERG•OLIVER ASSOCIATES, INC.



ENVIRONMENTAL SCIENCE & LAND USE CONSULTANTS
 14701 ST. MARY'S LANE, SUITE 400
 HOUSTON, TEXAS 77079 PHONE (281)589-0898 <http://www.bergoliver.com>





NOTE: A approximate location of the 100-year floodplain as depicted was derived from digitized FEMA data. The proper authorities, prior to any land planning or engineering activities, should verify the exact location of the 100-year floodplain.

0 1,000 2,000 4,000 Feet

	Project Boundary	14.3
	FEMA 100-Year Floodplain	

Location: Harris County, Texas
Image Source: NeoMap (2019)
Projection: NAD 83 UTM Zone 15N
GIS Contact: Ian McBride (imcbride@bergoliver.com)

WETLAND DETERMINATION AND CLASSIFICATION PROJECT OVERVIEW

Project #: 11165
For: City of Pasadena
Location: From SH 225 South to Spencer Hwy and from Allen Genoa Road East to SH 8; Harris County, Texas

REVISIONS
6/24/19 by MER

BERG ♦ OLIVER ASSOCIATES, INC.

ENVIRONMENTAL SCIENCE & LAND USE CONSULTANTS
14701 ST. MARY'S LANE, SUITE 400
HOUSTON, TEXAS 77079 PHONE (281)589-0898 <http://www.bergoliver.com>



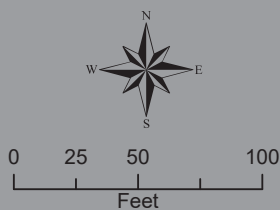


Image Source: Nearmap 2/24/19

NOTE: Potential wetland and jurisdictional water areas depicted have been classified as "isolated" or "adjacent" based upon Berg-Oliver Associates, Inc.'s assessment of the jurisdictional designation of these potential wetland and water areas. The actual designations should be verified by the Corps of Engineers - the final authority on jurisdictional status.

Note: Approximate location of the 100-year floodplain as depicted was derived from digitized FEMA data. The proper authorities, prior to any land planning or engineering activities, should verify the exact location of the 100-year floodplain.

- Sample Point
- FEMA 100-Year Floodplain
- Project Boundary (± 1.6 Acres)



WETLAND DETERMINATION AND CLASSIFICATION

DMA2-1

Project #: 11165
 For: City of Pasadena
 Location: 200 Vince St
 Harris County, Texas

REVISIONS

BERG•OLIVER ASSOCIATES, INC.

ENVIRONMENTAL SCIENCE & LAND USE CONSULTANTS
 14701 ST. MARY'S LANE, SUITE 400
 HOUSTON, TEXAS 77079 PHONE (281)589-0898 <http://www.bergoliver.com>





NOTE: Potential wetland and jurisdictional water areas depicted have been classified as "isolated" or "adjacent" based upon Berg-Oliver Associates, Inc.'s assessment of the jurisdictional designation of these potential wetland and water areas. The actual designations should be verified by the Corps of Engineers - the final authority on jurisdictional status.

Note: Approximate location of the 100-year floodplain as depicted was derived from digitized FEMA data. The proper authorities, prior to any land planning or engineering activities, should verify the exact location of the 100-year floodplain.

- Sample Point
- Potentially Adjacent Wetland (± 0.5 Acres)
- FEMA 100-Year Floodplain
- Project Boundary (± 3.2 Acres)

WETLAND DETERMINATION AND CLASSIFICATION

DMA2-3
REVISIONS

Project #: 11165
For: City of Pasadena
Location: 600 West Harris
Harris County, Texas

BERG•OLIVER ASSOCIATES, INC.

ENVIRONMENTAL SCIENCE & LAND USE CONSULTANTS
14701 ST. MARY'S LANE, SUITE 400
HOUSTON, TEXAS 77079 PHONE (281)589-0898 <http://www.bergoliver.com>



Image Source: Nearmap 2/24/19



NOTE: Potential wetland and jurisdictional water areas depicted have been classified as "isolated" or "adjacent" based upon Berg-Oliver Associates, Inc.'s assessment of the jurisdictional designation of these potential wetland and water areas. The actual designations should be verified by the Corps of Engineers - the final authority on jurisdictional status.

Note: Approximate location of the 100-year floodplain as depicted was derived from digitized FEMA data. The proper authorities, prior to any land planning or engineering activities, should verify the exact location of the 100-year floodplain.

- Sample Point
- ▢ Potential Adjacent Wetland (± 0.003 Acres)
- ▢ -Potentially Jurisdictional
- ▢ FEMA 100-Year Floodplain
- ▢ Project Boundary (± 1.3 Acres)



WETLAND DETERMINATION AND CLASSIFICATION

DMA2-4
REVISIONS

Project #: 11165
For: City of Pasadena
Location: 3000 Westside Drive
Harris County, Texas

BERG•OLIVER ASSOCIATES, INC.

ENVIRONMENTAL SCIENCE & LAND USE CONSULTANTS
14701 ST. MARY'S LANE, SUITE 400
HOUSTON, TEXAS 77079 PHONE (281)589-0898 <http://www.bergoliver.com>





NOTE: Potential wetland and jurisdictional water areas depicted have been classified as "Isolated" or "adjacent" based upon Berg-Oliver Associates, Inc.'s assessment of the jurisdictional designation of these potential wetland and water areas. The actual designations should be verified by the Corps of Engineers - the final authority on jurisdictional status.

Note: Approximate location of the 100-year floodplain as depicted was derived from digitized FEMA data. The proper authorities, prior to any land planning or engineering activities, should verify the exact location of the 100-year floodplain.

- Sample Point
- Potential Adjacent Wetland (± 0.008 Acres)
- - Potentially Jurisdictional
- FEMA 100-Year Floodplain
- Project Boundary (± 2.1 Acres)

WETLAND DETERMINATION AND CLASSIFICATION

DMB1-1
REVISIONS

Project #: 11165
For: City of Pasadena
Location: 1200 Parkside Drive (Strawberry Park)
Harris County, Texas

BERG•OLIVER ASSOCIATES, INC.

ENVIRONMENTAL SCIENCE & LAND USE CONSULTANTS
14701 ST. MARY'S LANE, SUITE 400
HOUSTON, TEXAS 77079 PHONE (281)589-0898 <http://www.bergoliver.com>



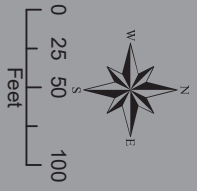


Image Source: Nearnmap 2/24/19

NOTE: Potential wetland and jurisdictional water areas depicted have been classified as "Isolated" or "adjacent" based upon Berg-Oliver Associates, Inc.'s assessment of the jurisdictional designation of these potential wetland and water areas. The actual designations should be verified by the Corps of Engineers - the final authority on jurisdictional status.

Note: Approximate location of the 100-year floodplain as depicted was derived from digitized FEMA data. The proper authorities, prior to any land planning or engineering activities, should verify the exact location of the 100-year floodplain.

- Sample Point
- ▨ Potentially Isolated Wetland
- ▨ -Potentially Non-Jurisdictional (± 0.16 Acres)
- ▭ Project Boundary (± 1.4 Acres)



WETLAND DETERMINATION AND CLASSIFICATION

DMB1-2
REVISIONS

Project #: 11165
For: City of Pasadena
Location: South Street ROW at Wichita Street
Harris County, Texas

BERG•OLIVER ASSOCIATES, INC.

ENVIRONMENTAL SCIENCE & LAND USE CONSULTANTS
14701 ST. MARY'S LANE, SUITE 400
HOUSTON, TEXAS 77079 PHONE (281)589-0898 <http://www.bergoliver.com>





WETLAND DETERMINATION AND CLASSIFICATION
DMC1-1

Project #: 11165
For: City of Pasadena
Location: 418-424 Scott Street
Harris County, Texas

REVISIONS

BERG•OLIVER ASSOCIATES, INC.
ENVIRONMENTAL SCIENCE & LAND USE CONSULTANTS
14701 ST. MARY'S LANE, SUITE 400
HOUSTON, TEXAS 77079 PHONE (281)589-0898 <http://www.bergoliver.com>





WETLAND DETERMINATION AND CLASSIFICATION
DMC1-2

Project #: 11165
For: City of Pasadena
Location: 502-514 Scott Street
Harris County, Texas

REVISIONS

BERG•OLIVER ASSOCIATES, INC.
ENVIRONMENTAL SCIENCE & LAND USE CONSULTANTS
14701 ST. MARY'S LANE, SUITE 400
HOUSTON, TEXAS 77079 PHONE (281)589-0898 <http://www.bergoliver.com>





WETLAND DETERMINATION AND CLASSIFICATION **DMC1-3**

Project #: 11165
 For: City of Pasadena
 Location: 614-624 Scott Street
 Harris County, Texas

REVISIONS

BERG•OLIVER ASSOCIATES, INC.
 ENVIRONMENTAL SCIENCE & LAND USE CONSULTANTS
 14701 ST. MARY'S LANE, SUITE 400
 HOUSTON, TEXAS 77079 PHONE (281)589-0898 <http://www.bergoliver.com>



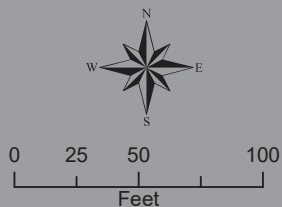


Image Source: Nearmap 2/24/19

NOTE: Potential wetland and jurisdictional water areas depicted have been classified as "isolated" or "adjacent" based upon Berg-Oliver Associates, Inc.'s assessment of the jurisdictional designation of these potential wetland and water areas. The actual designations should be verified by the Corps of Engineers - the final authority on jurisdictional status.

Note: Approximate location of the 100-year floodplain as depicted was derived from digitized FEMA data. The proper authorities, prior to any land planning or engineering activities, should verify the exact location of the 100-year floodplain.

● Sample Point

■ FEMA 100-Year Floodplain

■ Project Boundary (± 0.5 Acres)



WETLAND DETERMINATION AND CLASSIFICATION

DMC1-4

Project #: 11165
For: City of Pasadena
Location: 1202-1206 Scott Street
Harris County, Texas

REVISIONS

BERG•OLIVER ASSOCIATES, INC.

ENVIRONMENTAL SCIENCE & LAND USE CONSULTANTS
14701 ST. MARY'S LANE, SUITE 400
HOUSTON, TEXAS 77079 PHONE (281)589-0898 <http://www.bergoliver.com>



0
25
50
100

Feet

Image Source: Nearmap 2/24/19

NOTE: Potential wetland and jurisdictional water areas depicted have been classified as "isolated" or "adjacent" based upon Berg-Oliver Associates, Inc.'s assessment of the jurisdictional designation of these potential wetland and water areas. The actual designations should be verified by the Corps of Engineers - the final authority on jurisdictional status.

Note: Approximate location of the 100-year floodplain as depicted was derived from digitized FEMA data. The proper authorities, prior to any land planning or engineering activities, should verify the exact location of the 100-year floodplain.

●


Sample Point

FEMA 100-Year Floodplain

Project Boundary (± 0.5 Acres)



WETLAND DETERMINATION AND CLASSIFICATION
DMC1-5

<div>Project #:</div> <div>11165</div> <div>For:</div> <div>City of Pasadena</div> <div>Location:</div> <div>1220-1306 Scott Street</div> <div>Harris County, Texas</div>	REVISIONS		<div>BERG•OLIVER ASSOCIATES, INC.</div> <div>ENVIRONMENTAL SCIENCE & LAND USE CONSULTANTS</div> <div>14701 ST. MARY'S LANE, SUITE 400</div> <div>HOUSTON, TEXAS 77079 PHONE (281)589-0898 http://www.bergoliver.com</div>	

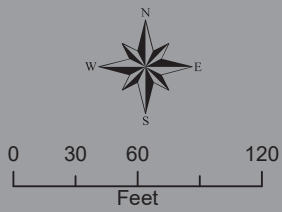


Image Source: Nearmap 2/24/19

NOTE: Potential wetland and jurisdictional water areas depicted have been classified as "isolated" or "adjacent" based upon Berg-Oliver Associates, Inc.'s assessment of the jurisdictional designation of these potential wetland and water areas. The actual designations should be verified by the Corps of Engineers - the final authority on jurisdictional status.

Note: Approximate location of the 100-year floodplain as depicted was derived from digitized FEMA data. The proper authorities, prior to any land planning or engineering activities, should verify the exact location of the 100-year floodplain.

- Sample Point
- ▨ Potential Isolated Wetlands (± 1.2 Acres)
- ▭ Project Boundary (± 2 Acres)



WETLAND DETERMINATION AND CLASSIFICATION **DMC1-6**

Project #: 11165
For: City of Pasadena
Location: 900 Foster Avenue
Harris County, Texas

REVISIONS

BERG•OLIVER ASSOCIATES, INC.
ENVIRONMENTAL SCIENCE & LAND USE CONSULTANTS
14701 ST. MARY'S LANE, SUITE 400
HOUSTON, TEXAS 77079 PHONE (281)589-0898 <http://www.bergoliver.com>

