



# ChemResponder Network



## Who We Serve

During a chemical incident, the ChemResponder Network enables federal, state, local, tribal, and territorial (SLTT) response organizations to rapidly and securely record, share, and aggregate large quantities of data while managing their equipment, personnel, interagency partnerships, and multijurisdictional event space on a free, cloud-based chemical data collection system.

ChemResponder is a collaborative tool developed by FEMA and other Federal partners. Access it via the ChemResponder app on smartphones and tablets (iOS, Android, Windows) and the Web ([www.chemresponder.net](http://www.chemresponder.net)) for it seamless and rapidly use at all levels of government during a chemical release incident.

## Services at a Glance

### What ChemResponder Offers

**Accessible from any device.** Access ChemResponder through the Web and through the ChemResponder app on smartphones, and tablets.

**Rapid data collection and sharing.** Rapidly collect and share chemical data, gas meter readings, calorimetric results, observations, and situation reports (SITREPs) to support faster, more accurate incident characterization and lifesaving decisions.

**Data quality standards.** The ChemResponder Network provides

tools to help SLTTs manage personnel, equipment, and field teams to help maintain data quality standards.

**SITREPs.** Create SITREPs to quickly log critical incident information about a response, including identified chemicals, medical impact, weather data, and photos. Choose your “Sharing Mode” to give access to just your organization, your partners, or the entire ChemResponder Network.

**Jurisdiction-specific reports.** Access jurisdiction-specific reports on the ChemResponder dashboard to help disseminate critical response information and ensure that first responders are fully aware of the dangers in the area and know how to address them in the event of an incident.

**HAZMAT incident database.** Need to analyze trends in areas of concern or extract lessons learned from various real-world responses? Search the entire ChemResponder Network by date, organization, location, identified chemicals, and keywords to find the data you need.

**Chemical facility inventories and maps.** Enter your facility’s chemical data into ChemResponder to allow responders access to the facility’s chemical inventory on their way to an incident. From the map view, HAZMAT, health departments, and emergency managers can easily see the geographic spread of chemical storage facilities across their jurisdictions. Any proprietary data can be marked to keep other organizations from accessing it.

## CHEMRESPONDER STEERING COMMITTEE

DEPARTMENT OF HOMELAND SECURITY /  
FEDERAL EMERGENCY MANAGEMENT  
AGENCY

The FEMA CBRN Office has facilitated the creation of a Steering Committee charged with guiding the development of the ChemResponder tool. This committee consists of members from:



- Department of Homeland Security (DHS) Science & Technology
- DHS Chemical Security Analysis Center (CSAC)
- DHS Countering Weapons of Mass Destruction (CWMD) Office
- Department of Defense (DoD) Combating Terrorism Technical Support Office (CTTSO)
- Technical Support Working Group (TSWG)
- Chemical Sector Outreach and Programs Infrastructure Security Division
- U.S. Chemical Safety Board, and
- Various SLTT partners



FEMA

Contact the ChemResponder Team at  
[support@chemresponder.net](mailto:support@chemresponder.net)

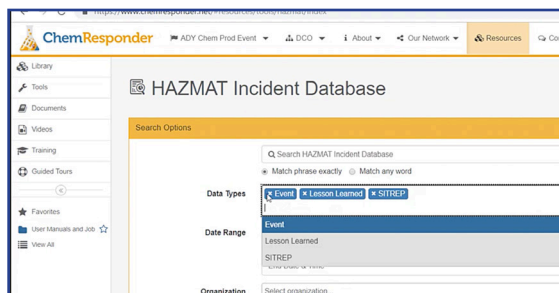


# How to Request a ChemResponder Account

Visit [www.chemresponder.net](http://www.chemresponder.net), go to the Sign In page, and select "Request one here." Enter your information and then choose to join an existing organization in ChemResponder or request a new organization. Account approvals are a two-step process; the first-level of approval comes from the organization administrator and the second-level of approval comes from the ChemResponder team. For access and technical support, contact [support@chemresponder.net](mailto:support@chemresponder.net)

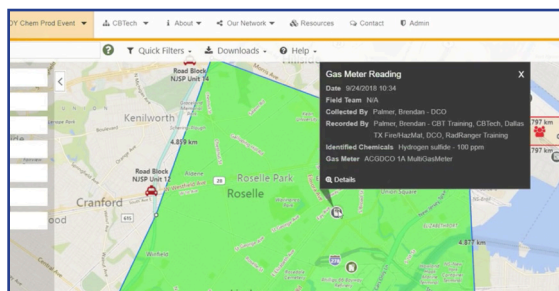


## Functionality at a Glance



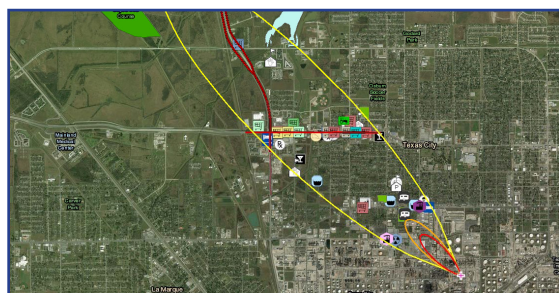
### HAZMAT INCIDENT DATABASE

Search for any incident within the ChemResponder Network that users have shared with the community.



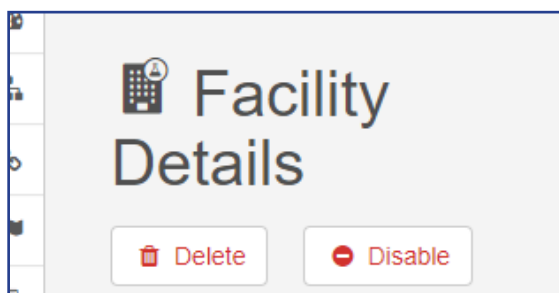
### MAP VIEW

View all data types (chemicals, colorimetric results, gas meters, SITREPs, observations) and facilities from a map view.



### DISPERSION MODELING AND GIS FILES

Upload GIS products from Aloha, or add your own Keyhole Markup Language (KML) or Shape files to an event record.



### MANAGE FACILITY INFORMATION AND CHEMICAL INVENTORIES

Upload facility information, including chemical inventories, documents, Tier II data, and more.

ChemResponder is a simple, yet powerful tool that fosters interoperability and informed-decision making.

FEMA CBRN: Preparing our nation to respond to chemical, biological, radiological, and nuclear catastrophes.



**FEMA**

For more information about the FEMA CBRN Office  
contact [fema-cbrnoffice@fema.dhs.gov](mailto:fema-cbrnoffice@fema.dhs.gov)

