



Situational Awareness Viewer for Emergency Response & Recovery

WHAT IS SAVER²?

FEMA has developed a geospatial viewer called the Situational Awareness Viewer for Emergency Response & Recovery (SAVER²). This viewer has the ability to display available data from multiple emergency management partners and other stakeholders to enable a more integrated operational approach during daily operations and disasters. SAVER² is a web-based information sharing system consisting of software and hardware that collects, processes, and displays real-time disaster related data from governmental and non-governmental partners.

WHAT MAKES UP THE VIEWER?

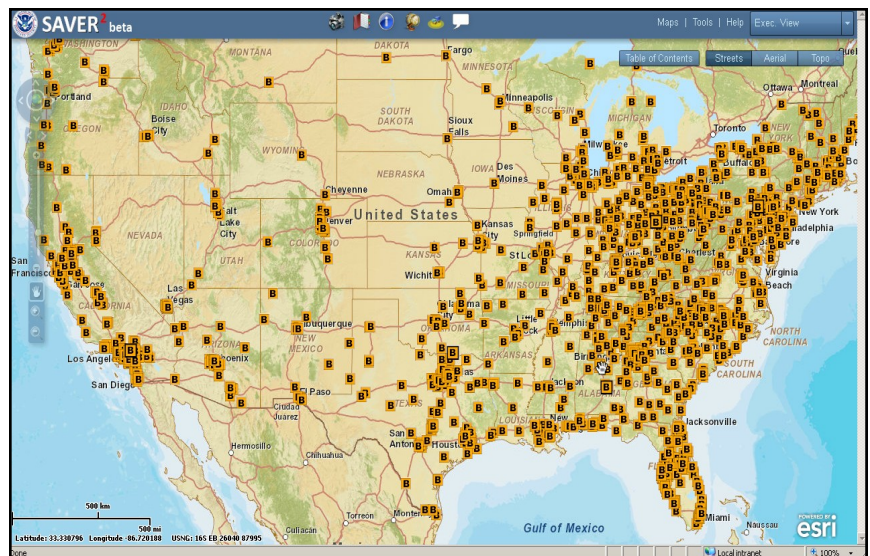
SAVER² consumes a large number of static layers, live data feeds, and services to include: weather forecasts, flood/hurricane, earthquake information, critical infrastructure information, demographic information, retail locations, congressional districts, sheltering locations, evacuation routes, Disaster Recovery Center locations, commodity staging areas, and locations of resources in transit. FEMA is also working with partners to expand this list and improve the quality of data.

WHY IS THIS IMPORTANT TO THE PRIVATE SECTOR?

SAVER² will allow for the visualization and analysis of operationally relevant information to be shared among authorized emergency management operation centers. The agency plans to make it accessible to other trusted partners, like the private sector, in the future. The primary goal of SAVER² is to facilitate collaborative planning, assist in achieving shared situational awareness, and improve decision-making during emergencies. For example, SAVER² will have the ability to show state evacuation routes, which can be shared with federal, state, and local emergency management officials and the private sector to help assist in mobilizing assets, routing resources, and ensuring every community is supported.

HOW CAN YOU HELP?

FEMA needs your help in expanding the private sector data in SAVER². At this time, we are requesting information on the locations of your retail stores and distribution centers. During a disaster response, we may also seek store operational status and in-stock levels of essential life saving and life sustaining items. This information will help emergency management officials effectively provide critical commodities to communities in need without duplicating efforts being done by private industry. By supporting and not competing with local and regional businesses; federal, state, and local partners can speed up disaster response and recovery efforts and help rebuild stronger communities.



Big Lots locations displayed in SAVER²



Situational Awareness Viewer for Emergency Response & Recovery

HOW TO PROVIDE INPUT?

We (FEMA) prefer to receive data as a data service. FEMA can ingest currently supported geospatial data standard services directly into SAVER² if your company has the ability to provide them. If you would like information regarding how to create a geospatial data service there are a number of solutions available, including open source software. If you have questions please contact FEMA-DMSE-SAYER2@dhs.gov.

Other and more traditional approach will be to use one of the following formats, listed in our order of preference:

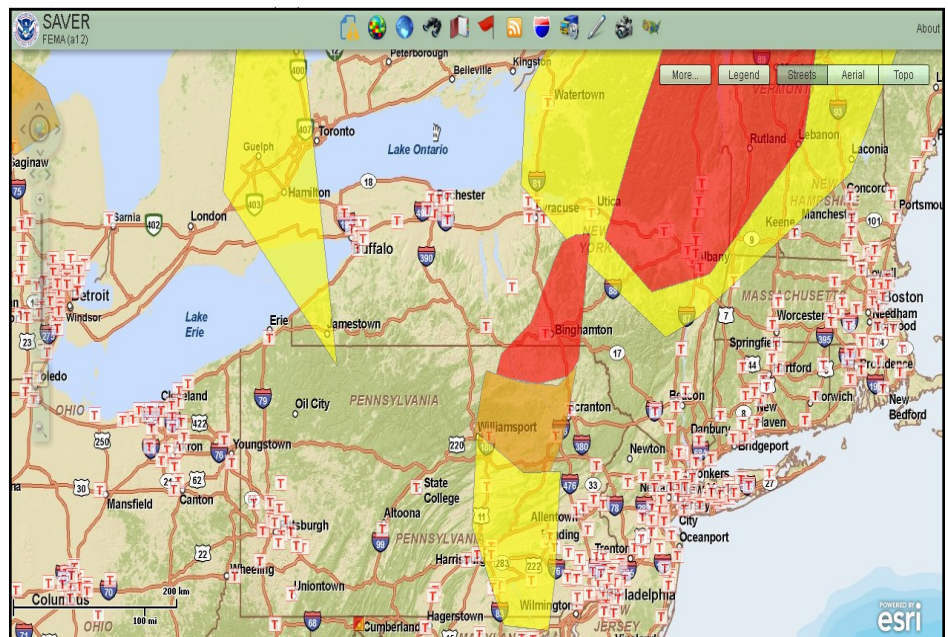
- Web Feature Service (WFS)
- Really Simple Syndication (RSS) a feed
- Extensible Markup Language (XML) a feed
- Web Map Service (WMS)
- Shapefile (ESRI vector data file)
- Excel Spreadsheet (template provided upon request)

Regardless which approach you select for submission, the data at a minimum should include:

- Unique store id (join field to existing data we already have) - number, double
- Status – text 10 characters

Additionally we request the following data structure:

- Street address – text 50 characters
- City – text 30 characters
- State – text 25 characters
- Zip – text 9 characters
- Lat – number, double
- Lon – number, double
- Hours of operation – text 30 characters
- Phone – text 15 characters
- Type – text 20 characters (this would indicate if location is a warehouse, super store, retail, etc...)
- Existing or new location or closed (we can use this as a flag to add an new or remove facility to our database)



(Example of how NOAA data feeds imported into SAVER2 can show areas of potential flood risk for Target stores)

Please email FEMA-DMSE-Saver2@dhs.gov for assistance on submitting data using one of the preferred methods above.

FEMA will endeavor to provide all appropriate safeguards to ensure this data is not distributed or used for anything other than specified homeland security and emergency response needs.

CONTACT US:

For general feedback and questions regarding SAVER², please contact FEMA's Private Sector Division at FEMA-Private-Sector@dhs.gov. Please send all technical inquiries to the Disaster Management and Support Environment (DMSE) Program Management Team at: FEMA-DMSE-Saver2@dhs.gov.