

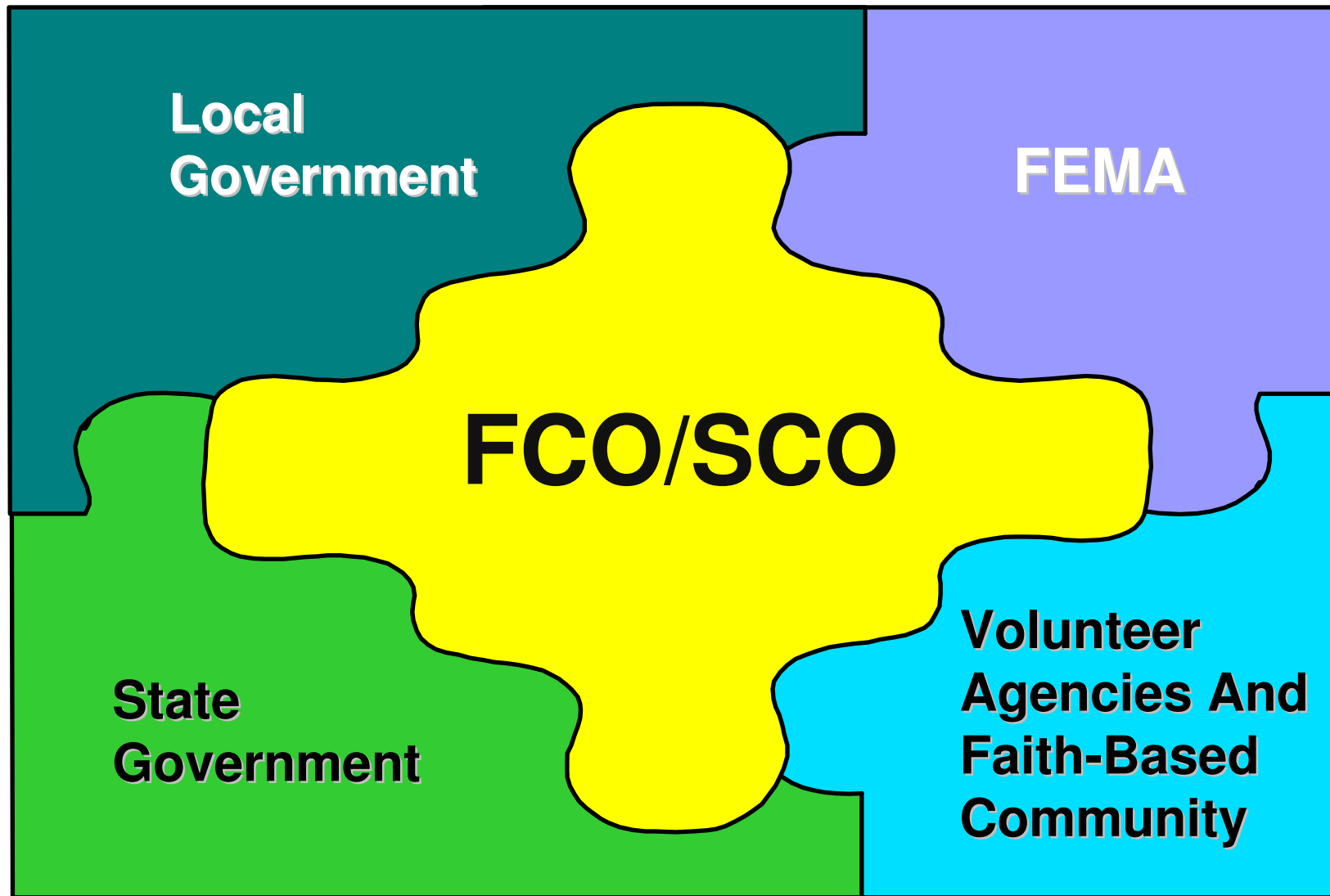
DR 1863 Louisiana

Long Term Recovery Building A Partnership

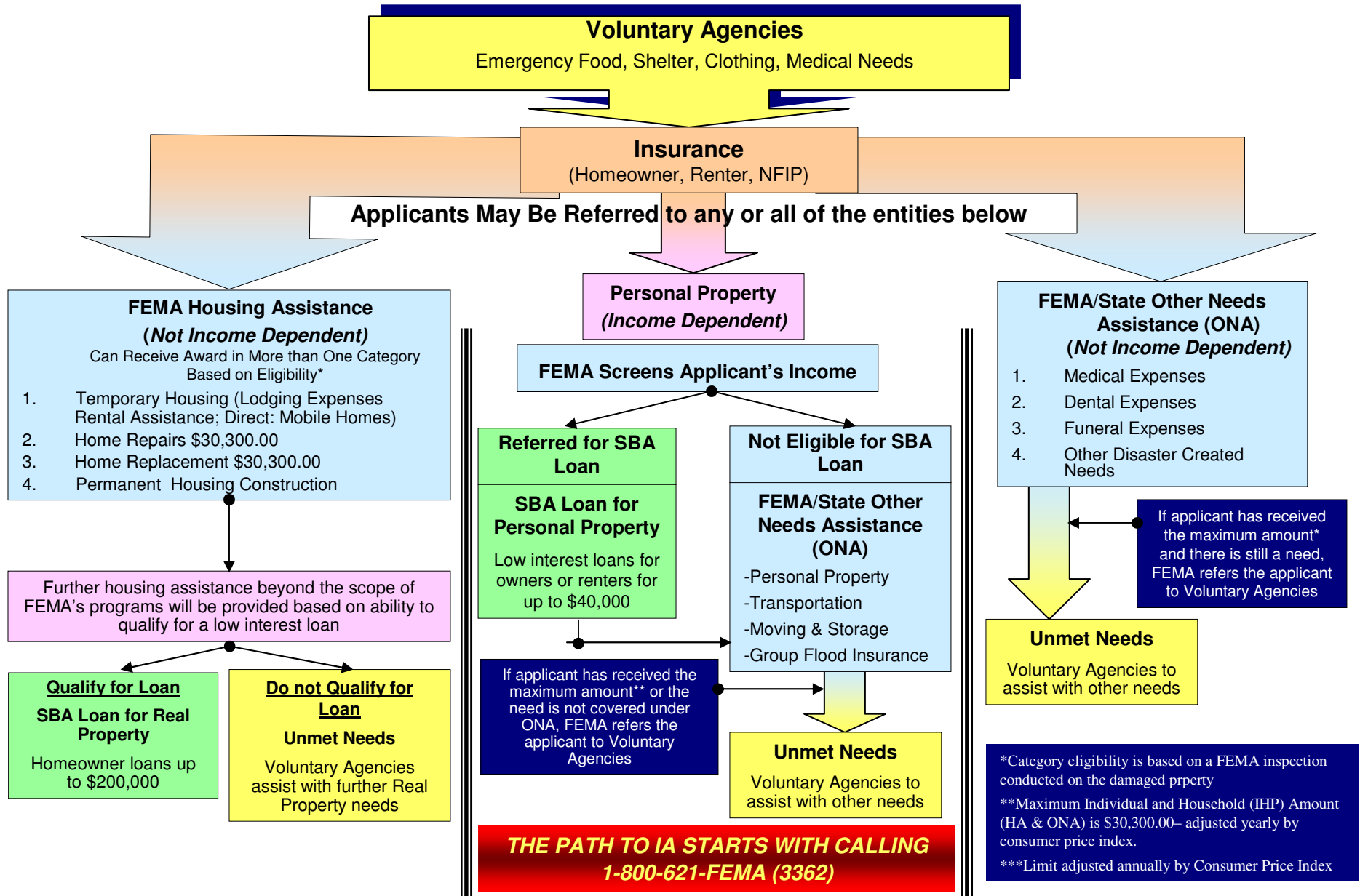


FEMA Voluntary Agency Liaison

Disaster Partnership



Individual Assistance Sequence of Delivery





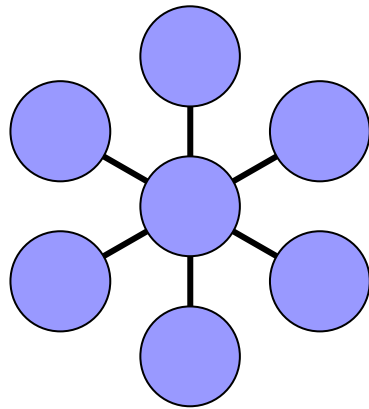
Voluntary Agencies

Emergency Food, Shelter, Clothing, Medical Needs



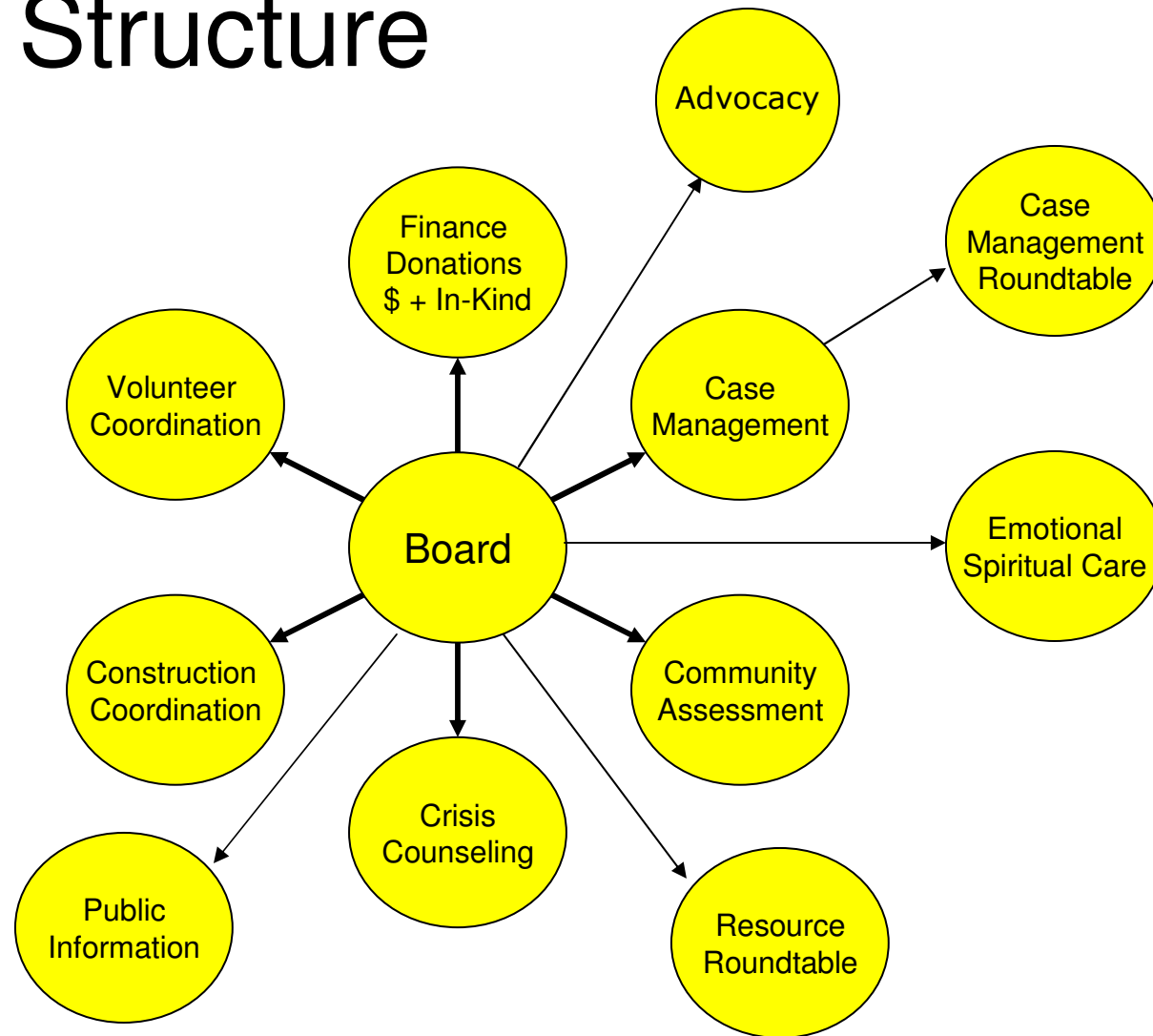
- **Assist People Through the Process**
- **Direct towards Long Term Recovery Groups**
- **Address the Qualified Unmet Disaster Needs**

Long Term Recovery Center



Addresses the qualified
disaster unmet needs

Long Term Recovery Committee Structure



Governance and Action Groups



Other Long Term Recovery Functions

Board Oversight of ~

- Interagency Liaison
- Finance
- Community Assessment
- Case Management
- Emotional Care
- Construction Coordination
- Volunteer Coordination
- Public Information
- Grievance Committee
- Membership Committee
- In-Kind Donations
- Advocacy
- Training and Education
- Mitigation
- Risk Management
- Event Planning
- Technical Support
- Newsletter
- Government Liaison
- Chaplain
- Accounting



Collaboration

Benefits of Collaboration

- Difficult for one agency to provide all services
- Share experiences and best practices
- See the larger picture and vision and provides a forum for developing shared procedures, protocols, and policies.
- Develop “intentional planning” that will enable the LTR group to increase it’s ability to attract resources and deliver services

Reasons to Collaborate

- Enhances knowledge, communication and information sharing
- Being inclusive attracts more resources – Money, Manpower and Materials
- Speak with one unified voice and can leverage resources
- Reduces the number of meetings
- Identifies gaps, problems, issues
- Coordinates efforts among agencies -Save money, manpower and time
- Minimize duplication of efforts and services
- Can ultimately accelerate progress and increase sustainability
- Challenges agencies to work beyond themselves



Key Points

- Build relationships early
- Realize there is more strength as a group –
“the whole is greater than the sum of the parts”
- There is a greater impact when the resources are maximized
- Collaboration includes all community partners. Partners utilize knowledge, skills and abilities available, and add collective experiences, to achieve the same goal.

Summary

