



# Biologically Derived Toxins Addendum to the Biological Incident Annex of the Response and Recovery Federal Interagency Operational Plan

*June 2023*



Homeland  
Security

This page is intentionally left blank.

## Handling Instructions

For handling instructions, refer to the *Biological Incident Annex (BIA) to the Response and Recovery Federal Interagency Operational Plan (FIOP)*.

## Use of This Document

This *Biologically Derived Toxins Addendum to the BIA of the Response and Recovery FIOP* (Biotoxins Addendum) provides guidance and serves as a reference for federal agency planning efforts involving a biologically derived toxin (or “biotoxin”) incident. Other stakeholders (e.g., state, local, tribal, and territorial [SLTT] as well as insular area governments; non-governmental organizations [NGOs]; voluntary agencies; and the private sector) engaged in their own planning efforts will find this document useful in enhancing their understanding of how the Biotoxins Addendum is implemented by the federal government and how to best integrate their planning efforts with those outlined in this addendum.

Distribution, transmission, and destruction of this addendum is in accordance with Department of Homeland Security (DHS) Management Directive 11042.1, which is publicly available. Questions pertaining to the distribution, transmission, or destruction of this addendum or requests for obtaining a copy of DHS Management Directive 11042.1 should be submitted via email to DHS/Federal Emergency Management Agency (FEMA) Response Directorate, Planning and Exercise Division, National Planning Branch, at [response\\_planning@fema.dhs.gov](mailto:response_planning@fema.dhs.gov).

## Rescission Notice

For information on the Rescission Notice, refer to the BIA.

This page is intentionally left blank.

# Record of Changes

Version	Date	Summary of Changes	Name

This page is intentionally left blank.

# Table of Contents

Addendum Overview .....	7
Situation .....	1
Purpose .....	1
Scope.....	2
Facts, Planning Assumptions, and Critical Information Requirements (CIRs) .....	2
Facts .....	2
Planning Assumptions.....	3
Critical Information Requirements (CIRs) .....	3
Mission .....	4
Mission Statement .....	4
Desired End State .....	4
Primary Authorities and Relevant Declarations .....	4
Primary Authorities .....	4
Major Declarations of Relevance .....	4
Execution .....	4
Operational Phases .....	4
Concept of Operations .....	4
Biotxin Detection .....	4
Lines of Effort (LOEs).....	6
Federal-to-SLTT Coordination .....	7
Key Federal Decisions.....	10
Administration, Resources, and Funding .....	10
Oversight, Coordinating Instructions, and Communications.....	10
Appendix A: Federal Response Coordination .....	A-1
Situation.....	A-1
Roles and Responsibilities of Federal Agencies with Primary Authority for Federal Response to a Biological Incident .....	A-1
State, Local, Tribal, and Territorial (SLTT) Governments .....	A-6
Healthcare Coalitions.....	A-6
Private Sector .....	A-6

Support and Coordination Elements.....	A-6
Appendix B: Intelligence and Surveillance .....	B-1
Appendix C: Operations .....	C-1
Appendix D: Resource Management .....	D-1
Appendix U: Outstanding Policy Issues.....	U-1
Appendix V: Authorities and Other References.....	V-1
Appendix W: Glossary .....	W-1
Appendix X: Execution Checklist .....	X-1
Appendix Y: Acronyms and Abbreviations .....	Y-1



## Addendum Overview

This Biotoxins Addendum is a first edition and uses the federal organizing framework for responding to a biotoxin incident, such as that which was outlined in the BIA. This document also serves as a reference for state, local, tribal, and territorial (SLTT) authorities and private sector organizations to conduct adaptive planning that is consistent with current hazard and risk analyses for specific biotoxin threats. This addendum was designed to be scalable and adaptable for a range of biotoxin incidents, regardless of cause, size, location, or complexity.

The federal health response to a biotoxin threat or incident within the scope of this addendum refers to a situation in which a toxin of biological origin results in a significant national incident. Biotoxins can affect people as well as food and agriculture. (See the *Food and Agriculture Incident Annex* [FAIA] for additional details.)

Response to a biotoxin threat or incident should be well coordinated and must be integrated with consequence management and the law enforcement and counterterrorism communities, when appropriate, to ensure integrated and risk-informed decision making. For additional information concerning investigations of suspected or known intentional biotoxin incidents, refer to the BIA Branch 1 Plan: Intentional Biological Incident. Although this Biotoxins Addendum provides guidance for the whole community, it mirrors the BIA by applying the same concept of operations for delivering public health response capabilities, highlighting the unique attributes associated with biotoxin incidents, and focusing on response requirements at the federal level.

The addendum is composed of a base document, appendices, and a reference to the BIA Branch 1 Plan. It details the importance of establishing operational coordination among the Prevention, Response, and Recovery Mission Areas.<sup>1</sup> This document is not meant to be duplicative of the BIA, FIOPs, or other plans.

---

<sup>1</sup> Planners should also anticipate the execution of additional plans of the law enforcement community and, when appropriate, the counterterrorism community during the response phase to credible biotoxin threats or incidents. These plans also contain descriptions of the roles and responsibilities of federal and SLTT agencies.

This page is intentionally left blank.

# SITUATION

---

Biotoxins are biologically derived toxins that are either naturally occurring or manmade from a variety of sources and, therefore, have varying uses, including those used medicinally and others that are harmful (e.g., botulinum neurotoxin, ricin, saxitoxin, and mycotoxins).

Biotoxins are neither diseases nor chemical in nature and are also non-communicable. Exposure to them typically results in acute infections but potentially can result in prolonged pathologies. Exposure to biotoxins can also lead to non-communicable diseases and ailments, and a complete cure is rarely achieved.

Planning considerations for responses to incidents involving such toxins was not the focus of the Biological Incident Annex (BIA) to the Response and Recovery Federal Interagency Operational Plan (FIOP), although some aspects of the response outlined in the BIA, such as the law enforcement response, would be the same regardless of whether a biological agent or a biotoxin was used. For instance, for suspected or actual intentional biological threats and incidents, the Department of Justice (DOJ) would act as the lead federal agency (LFA) for the operational law enforcement response (see BIA Branch 1 Plan: Intentional Biological Incidents). Additionally, public health and consequence management responses to incidents involving biotoxins are likely to be similar in many ways to the response to other biological incidents. Other annexes, such as the *Oil/Chemical Incident Annex* and/or the *Food and Agriculture Incident Annex*, may contain useful information for such responses. As a result, this addendum to the BIA closes a potential planning gap and identifies planning and preparedness considerations for biotoxin incidents. It complements the information provided in the BIA and provides planning information for SLTT partners who may be initially investigating and responding at the local level before seeking additional federal partner support.

## Purpose

The Biotoxins Addendum provides hazard-specific supplemental information to the BIA.

Federal interagency partners can respond in a lead role or in support of SLTT governments to save lives; reduce health impacts; protect property, critical infrastructure, the workforce, and the environment; ensure economic stability; and meet basic human needs when there is a threat of or an occurrence of a biotoxin incident.

The Biotoxins Addendum addresses pertinent Lines of Effort (LOEs) (see Table 2) supporting the unique aspects of a biotoxin response that are not addressed in the BIA. The Biotoxins Addendum also acknowledges potential differences in response structures while also emphasizing the importance of alignment of federal coordination and collaborative mechanisms to achieve an early and effective response. The complex nature of a biotoxin threat or incident necessitates response and recovery efforts among numerous federal agencies that include effective communications, coordination, and collaboration.

Intergovernmental collaboration could begin slowly and increase steadily, depending on how the incident spreads or occurs.

This addendum:

- Addresses biotoxins (e.g., botulinum neurotoxin, ricin, saxitoxin, and mycotoxins) not associated with active infections identified in the BIA, including toxins that might otherwise be produced during an infection but can also be administered in a purified form (e.g., botulinum neurotoxin, staphylococcal enterotoxin).
- Validates a significant federal review of relevant policy, coordination, decision-making, and response structures based on previous exposures and incidents.
- Emphasizes that most biotoxin incidents are initially investigated and responded to at the SLTT levels before involving federal partner support.

The Branch 1 Plan: Intentional Biological Incidents, included as Attachment 1 to the BIA, also describes operational coordination and information-sharing mechanisms within the Prevention Mission Area (e.g., DOJ/Federal Bureau of Investigation [FBI] Weapons of Mass Destruction Strategic Group [WMDSG]) when intentional biological threats and incidents are suspected to be or are intentional, including federal crimes of terrorism involving biological pathogens.

## Scope

This addendum applies to the federal response to suspected or confirmed biotoxin incidents, whether naturally occurring, accidental, or intentional, that pose a significant human health hazard within the United States, as measured by injury, death, or damage to property, the environment, or the economy. This addendum only covers those actions, responsibilities, and plans that are unique to biotoxins and that are not covered in the BIA, other incident annexes, or other interagency response and recovery plans.

## Facts, Planning Assumptions, and Critical Information Requirements (CIRs)

Following are the facts, planning assumptions, and CIRs that may affect the operational environment for a biotoxin incident response; these are supplemental to those outlined in the BIA.

### Facts

- There are a wide variety of biotoxins with varying uses, including those used medicinally and others that are harmful (e.g., botulinum neurotoxin, ricin, saxitoxin, and mycotoxins).
- Exposure to biotoxins can present a variety of symptoms, from mild to severe, depending on route of exposure and dosing and may require timely and extensive medical and/or supportive care.

- Biotoxins can be found and extracted from a variety of natural and commonly available resources or can be artificially synthesized.
- Biotoxins are an evolving threat, as scientific manipulation (or genetic engineering) could theoretically generate new variants and biologics as well as new dispersal methods and tools.

## Planning Assumptions

- Biotoxins are more difficult to detect and identify in the environment and in clinical samples than many replicating biological agents.
- For most biotoxins, clinical diagnosis remains elusive if/until specialized testing or laboratories are involved.
- Clinical presentation of biotoxin-related symptoms is likely non-specific, given the vast range of biotoxin agents.
- The cause of a significant biotoxin incident is not usually readily apparent. It is U.S. policy that any potential terrorism threat or incident involving biotoxins will be treated as a potential act of terrorism until otherwise determined by the Attorney General, acting through the FBI Director.
- Investigative responses to intentional acts (including potential acts of terrorism) include coordinated activities with federal agencies and, as necessary, SLTT agencies as well as joint investigations by public health and law enforcement agencies, when appropriate.

## Critical Information Requirements (CIRs)

- How is the biotoxin spread?
- What is the most likely biotoxin used in the incident?
- What capabilities (e.g., methodologies, diagnostics) are available to trace the footprint (i.e., source, origin) of a biotoxin incident?
- Are public and private healthcare facilities experiencing patient surges due to the incident that are prompting the need for Alternate Care Sites (ACSs)?
- Are there indications to prove/disprove the intentional nature of the incident?
- Is there basic threat characterization information on the specific biotoxin that is critical to operational response (e.g., lethal dose levels, environmental stability, decontamination effectiveness)?
- Would there be enough existing medical countermeasures (MCMs) available for use during emergency events to enable a response within hours rather than days?
- Are current MCMs effective for treating ill or exposed persons?
- What non-pharmaceutical interventions (NPIs) are appropriate to limit exposure?
- What are the key messages in the public guidance to ensure healthcare communities can effectively implement response actions?

- Is evidence preserved for potential criminal investigation and prosecution, as necessary?
- What are news and social media users communicating regarding the biotoxin incident?
- What is the appropriate decontamination guidance to be issued to prevent further spread of the biotoxin?
- How quickly can a new MCM product, drug, or device that is needed for a biotoxin incident response be developed, produced, and delivered?

## MISSION

---

### Mission Statement

The mission of the federal government is to conduct operations and investigations using all available tools to protect against, prevent, mitigate, respond to, and recover from a biotoxin-related incident. This success of the federal mission is contingent upon a coordinated whole community response.

### Desired End State

The nation has recovered from the biotoxin incident, is secure, and remains prepared to address future biotoxin incidents. The biotoxin has been identified, characterized, and, for intentional biological incidents, linked to identified perpetrators who are held accountable.

### Primary Authorities and Relevant Declarations

#### Primary Authorities

For information on authorities, refer to the BIA.

#### Major Declarations of Relevance

For declaration information, refer to the BIA.

## EXECUTION

---

### Operational Phases

For operational phase information, refer to the BIA.

### Concept of Operations

For concept of operations information, refer to the BIA.

#### Biotoxin Detection

The BIA describes detection and identification of a biological pathogen of concern. The information contained in this section and Table 1 focus specifically on biotoxin detection.

The sources of information listed in Table 1 are very similar to those contained in Table B-1 of the BIA. This table contains specific biotoxin detection examples.

As with biological pathogens, biotoxin detection by healthcare, public health, or law enforcement entities may predictably occur after the outbreak is well underway or the impacted individual(s) is exhibiting clinical manifestations associated with biotoxin exposure. In addition, SLTT entities and the private sector (e.g., healthcare facilities, laboratories) are likely to detect biotoxin presence and/or exposure before federal entities are involved and either providing support to the SLTT and private sector organizations (for further detection or identification of toxin presence or extent of exposure) or directly responding to prevent further exposure in communities.

Initial biotoxin exposure involving multiple individuals and/or an unknown source of exposure is likely to prompt multi-agency response coordination across federal and SLTT partners. The determination of a “biological incident” may be required to expand current response and resource capabilities (to affected SLTT jurisdictions) as well as to enhance interagency coordination and communications.

**Table 1: Examples of Initial Detection of Potential Biotoxin Exposure**

Source of Information	Example(s) of Initial Information Reported/Received	Verification Process
Individual practitioner or healthcare facility laboratory	<ul style="list-style-type: none"> <li>▪ Patient(s) with toxic syndrome consistent with an exposure.</li> <li>▪ Multiple patients with similar toxic syndrome recognized within a very short, near-simultaneous timeframe.</li> </ul>	<ul style="list-style-type: none"> <li>▪ Poison Control Center may need to be contacted to identify possible biotoxin.</li> <li>▪ Private sector, Laboratory Response Network (LRN), or Department of Health and Human Services (HHS)/Centers for Disease Control and Prevention (CDC) laboratory confirmation may be required.</li> </ul>
Individual facility; local or state health department surveillance system	<ul style="list-style-type: none"> <li>▪ Patients with toxic syndrome consistent with an exposure.</li> </ul>	<ul style="list-style-type: none"> <li>▪ Private sector, LRN, or HHS/CDC laboratory confirmation may be required.</li> <li>▪ Epidemiologic investigation needed to confirm patterns of similarity.</li> </ul>
Local or state public health laboratory, private sector laboratory, or HHS/CDC laboratory	<ul style="list-style-type: none"> <li>▪ Clinical laboratory sample of patient(s) with suspected biotoxin exposure consistent with recognized toxic syndrome.</li> </ul>	<ul style="list-style-type: none"> <li>▪ LRN or HHS/CDC laboratory confirmation is required.</li> </ul>

Source of Information	Example(s) of Initial Information Reported/Received	Verification Process
Law enforcement and intelligence community	<ul style="list-style-type: none"> <li>▪ Analyzed environmental samples that identify biotoxin(s) present in the given environment.</li> <li>▪ Clandestine laboratory discovery with biological pathogens and/or with extraction/synthesis processes present to manufacture biotoxins.</li> </ul>	<ul style="list-style-type: none"> <li>▪ Law enforcement investigations are paired with public health expertise.</li> </ul>

## Lines of Effort (LOEs)

The federal response to a biotoxin incident is organized around five LOEs. LOEs are defined as specific activities required to achieve the intended outcome by linking multiple tasks to goals, objectives, and end states. The five LOEs for this plan form the core of response and recovery operations to a biotoxin incident and integrate emergency management, public health, law enforcement, and medical functions. Federal departments with equities in any of these LOEs would then provide qualified and sufficient representation to the Unified Coordination Group (UCG), if one is formed, to ensure effective collaboration, coordination, and information sharing. The LOEs in a UCG construct may be incorporated as branches or task forces and may be staffed with units to execute national-level objectives and maintain span of control.

Furthermore, LOEs are a starting point for response operations and may be added to, modified, or omitted based on the circumstances and requirements of a specific response. LOEs specifically applicable to a biotoxin incident response are listed in Table 2 below.

**Table 2: Biotoxin Incident Lines of Effort (LOEs) and Their Key Activities and Applicable Emergency Support Functions (ESFs)**

Line of Effort	Key Activities	Applicable ESF(s)
Detect, Prevent, Characterize, and Attribute the Biotoxin Incident	Emergency management, public health, law enforcement, and medical activities to identify indicators of a potential biotoxin incident and prevent it from occurring and to define and track the medical and health characteristics and impacts of the disease outbreak when a biotoxin incident does occur.	#5, #8, #10 <sup>2</sup>
Medical Countermeasures (MCMs)	Activities to diagnose, prevent, protect from, and/or treat pre- and post-exposure for persons (including service animals) with suspected exposure to biological agents, infectious diseases, and/or chemical or radiological agents.	#8

<sup>2</sup> ESF #10's primary objective is the preparation for and response to oil and hazardous materials incidents, per the NRF ESF #10 Annex. References to ESF #10 throughout the document should include the consideration that ESF #10 operations may not be able to support these diverse LOEs, given the specifications listed in the ESF #10 Annex and other resource constraints.



Line of Effort	Key Activities	Applicable ESF(s)
Healthcare Resilience	Activities to implement and/or support health and medical services for the affected population.	#8, #10
Public Health and Safety	Activities to support public health services, including epidemiological surveillance, preventive services (e.g., disease prevention, vaccinations, laboratory information, and health information), and environmental public health (e.g., vectors), as well as public safety and security assistance for federal and SLTT organizations that may be overwhelmed by the results of an actual or anticipated biotoxin incident if necessary.	#5, #8, #10, #13
Public Health Supply Chain	Key activities include the production and delivery of critical supplies to the healthcare and public health sectors. These supplies include personal protective equipment (PPE), diagnostics, and other medical devices, as well as pharmaceuticals, therapeutics, biologic, and vaccines.	#8

### Federal-to-SLTT Coordination

The mechanisms employed for coordination among federal, SLTT, and private sector partners can expand and contract in accordance with the level of operational coordination taking place at the national level. Figure 1 identifies what parallel degrees of coordination at the federal, state, and local levels may look like. The Department of Health and Human Services (HHS) may be in direct coordination with SLTT public health entities during public health incidents.

The sections below provide examples of federal-to-SLTT coordination and unified coordination constructs that are scalable, ranging from a response that can be managed at the local level to a response managed at the highest federal level. The structures incorporate increased functional responsibilities, as required, for managing a significant public health or medical incident.

LOE focus areas that federal-to-SLTT coordination should encompass include but are not be limited to the following (not in order of importance), as appropriate:

1. Detect, Prevent, Characterize, and Attribute the Biotoxin Incident
  - Prevention
  - Detection and surveillance
  - Diagnosis and laboratory testing of biological agents
2. Medical Countermeasures (MCMs)
  - Safety and security of drugs, vaccines, therapeutics, biologics, and medical devices
  - In situ/on-site biotoxin identification and point-of-need diagnostics
3. Healthcare Resilience

- Medical surge
- Patient care

#### 4. Public Health and Safety

- Assessment of public health/medical needs
- Public health
- Public health and medical information
- Health surveillance
- Behavioral healthcare
- Behavioral health impacts
- Food safety and defense
- Food safety and regulated medical products
- Agriculture safety and security
- Worker safety
- Public safety and security assistance

#### 5. Public Health Supply Chain

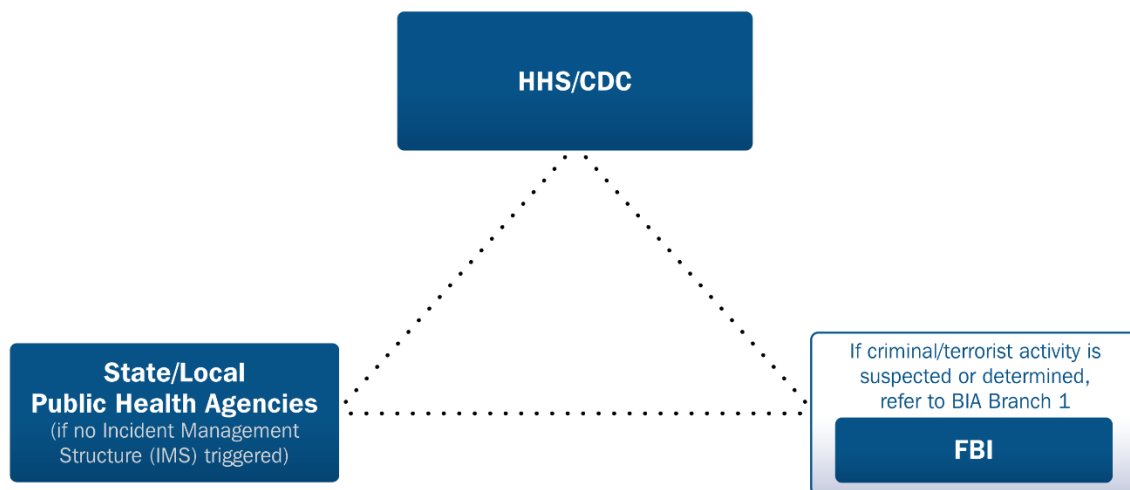
For more information on federal-to-SLTT coordination in a biological event response, refer to the BIA.

#### *Coordination Constructs*

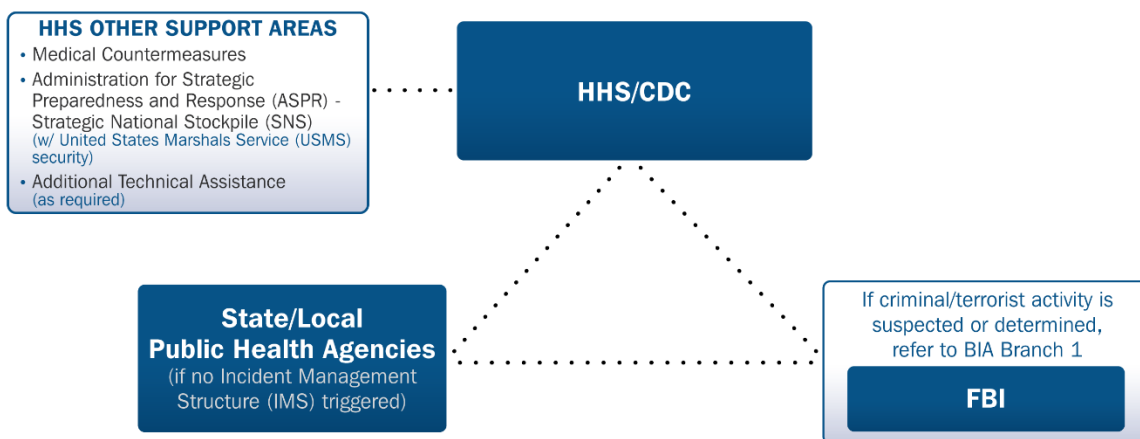
Examples of coordination constructs are provided below to illustrate how unified coordination has been established for previous responses to other biological incidents. The constructs serve as examples of the varying levels of coordination required between SLTT and federal response agencies/organizations based on the size and complexity of an incident. They range from those that involve localized early detection and reporting of a biotoxin incident and require no additional federal resources to incidents that require a large-scale federal response.

As incidents escalate or de-escalate in size and complexity and federal coordination constructs change to meet the scale of the response, leadership and staff should take extra steps to minimize disruption when there is a change in federal coordination. Consideration should be given to implementing a transition period to preserve or adjust processes that have been established. Leadership might also work to identify possible roles and responsibilities for new coordination constructs and command chains to minimize disruption of response efforts. The UCG should also consider identifying an approval process for public messaging and for data sharing (within the federal response organization and with non-federal partners) to provide clarity to staff on information sharing when response leadership and priorities change. The Response and Recovery FIOF provides a notional process flow for Emergency Support Function (ESF) #15 (External Affairs) that may be adapted to a specific incident.

*SLTT/Federal Coordination with the HHS/CDC Lead*



**Figure 1: Example of SLTT-to-Federal Coordination (Small-scale Biological Incident)**

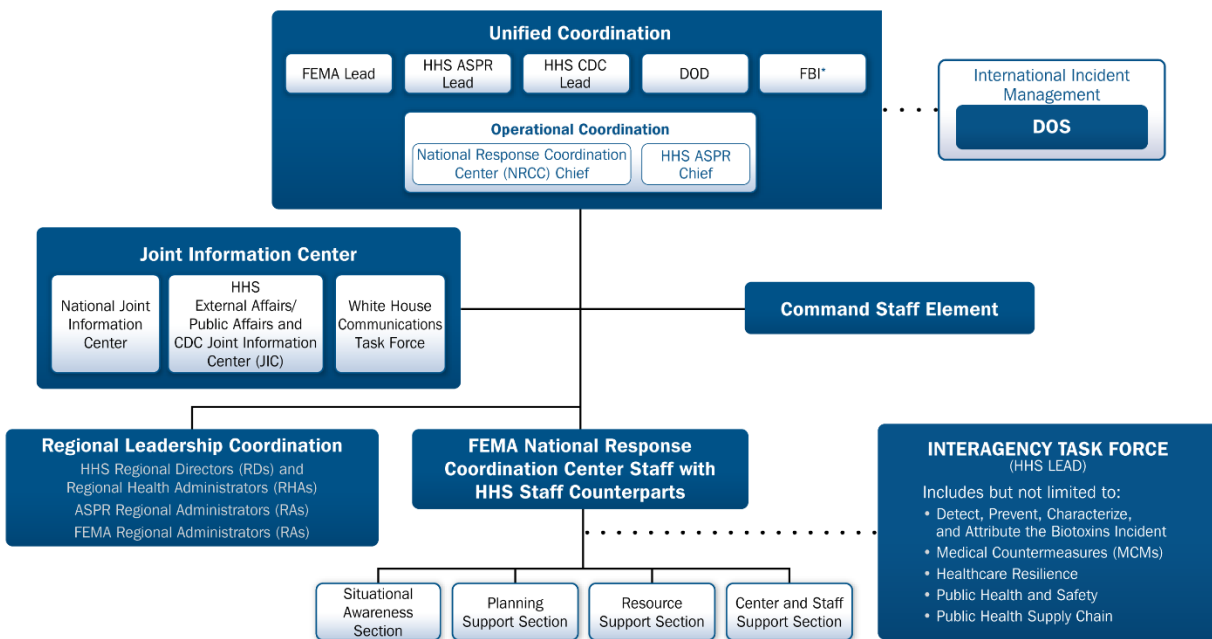


**Figure 2: Example of SLTT-to-Federal Coordination with Additional Federal Assistance**

Various incident management entities have adopted models for the management of biological incidents based on the Incident Command System (ICS), which is designated by the National Incident Management System (NIMS) for use in all domestic response emergency operations. ICS provides a consistent methodology and organizational construct for management of complex response operations. It is meant to be flexible and scalable to adapt to the response parameters of each incident.

## Unified Coordination Group (UCG)

The following construct is an example of how a UCG may be structured when responding to a biological incident. When a UCG is initiated, a planning team from HHS and DHS/FEMA, with other agencies as required, assesses the situation and coordinates with various partners to identify mission requirements and interagency solutions to address shortfalls and bridge gaps prior to transitioning to a UCG.



*\*During an actual or suspected intentional incident an FBI liaison may be inside the UCG, as contrasted with Figure A-3 in the base plan of the BIA, which uses a dotted line to the FBI to depict the relationship for intentional incidents. Regardless of which organizational construct is used, it is U.S. Policy that any potential terrorism threat or incident involving a biological agent or a biological toxin will be presumed to be terrorism until otherwise determined by the Attorney General, acting through the FBI Director. During intentional incidents, the FBI-led WMDSG serves coordination functions (e.g., information sharing, and deconfliction of law enforcement and consequence management operations) and connects to UCGs. See the Biological Incident Annex, Attachment 1: the Branch 1 Plan: Intentional Biological Incidents.*

Figure 3: Unified Coordination Group

## Key Federal Decisions

For information on key federal decisions, refer to the BIA.

## ADMINISTRATION, RESOURCES, AND FUNDING

For information on administration, resources, and funding, refer to the BIA.

## OVERSIGHT, COORDINATING INSTRUCTIONS, AND COMMUNICATIONS

For information on oversight, coordinating instructions, and communications, refer to the BIA.

# Appendix A: Federal Response Coordination

---

## Situation

Biotoxin threats and incidents may be complicated by incomplete information, particularly the uncertainty in detection and recognition that an incident is occurring.

## Roles and Responsibilities of Federal Agencies with Primary Authority for Federal Response to a Biological Incident

This section details the roles and responsibilities of federal departments that may be involved in the response and recovery to a biotoxin incident whose actions may differ from those identified in the *Biological Incident Annex (BIA) to the Response and Recovery Federal Interagency Operational Plan (FIOP)*. This list is not exhaustive and merely represents the most prominent stakeholders.

## Federal and Regional Government Offices

No changes in action from the BIA.

## Department of Health and Human Services (HHS)

### *Administration for Strategic Preparedness and Response (ASPR)*

The Administration for Strategic Preparedness and Response (ASPR) leads the HHS response to public health emergencies and the coordination of ESF #8 and the HHS Recovery Support Function (RSF). HHS/ASPR leads the Public Health Emergency Medical Countermeasures Enterprise (PHEMCE), which is composed of HHS/Centers for Disease Control and Prevention (CDC), HHS/National Institutes of Health (NIH), HHS/Food and Drug Administration (FDA), and interagency partnerships with the Department of Veterans Affairs (VA), Department of Defense (DOD), Department of Homeland Security (DHS), and U.S. Department of Agriculture (USDA). Additionally, HHS/ASPR, in collaboration with HHS/CDC and in coordination with the Secretary of Homeland Security, determine the acquisition, allocation, and distribution of Strategic National Stockpile (SNS) products. HHS/CDC provides scientific recommendations to HHS/ASPR for decisions on the allocation of assets to SLTT governments. The office provides federal support, including medical professionals through the HHS/ASPR National Disaster Medical System (NDMS), to augment state and local capabilities during an emergency or disaster. During a response to a biotoxin incident HHS/ASPR is responsible for the following:

- Deploying and delivering medical countermeasures (MCMs) and nonpharmaceutical interventions (NPIs) to mitigate biotoxin incidents.

- Convening PHEMCE partners during the recovery phase to improve MCM mission capabilities and enhance preparedness for future biological incidents.
- Managing the public health supply chain, including vaccines, therapeutics, biologics, and diagnostics.
- Providing medical logistics to support continuity of essential public health and medical operations and services.
- Coordinating clinical care specialists to support SLTT government healthcare needs.
- Coordinating the assessment of behavioral health impacts.
- Providing support for the provision of case management and advocacy services.

#### *Centers for Disease Control and Prevention (CDC)*

- Conducts epidemiologic and laboratory investigations to define cases, identify populations at risk, and determine the source of exposure.
- Provides laboratory support for the identification, confirmation, and characterization of the biotoxin.
- Provides expertise to the Environmental Protection Agency (EPA) and other partner agencies to determine the extent and degree of environmental contamination.
- Provides expertise regarding human health impacts of biotoxin exposure.
- Provides guidance on the identification, diagnosis, and clinical management of human cases.
- Provides recommendations to protect worker and responder safety and health.
- Conducts health communications activities that support public health partners, media outlets and organizations, and the public through the provision of clear, concise, and accurate information regarding the biotoxin.
- Develops and ensures the safety, security, acquisition, deployment, dispensing, and effective use of biotoxin MCMs.
- Advises federal and SLTT partners regarding clinical care and makes MCM recommendations related to biotoxins.
- Provides key subject matter expertise and technical analysis to federal and SLTT partners regarding the human health impacts of biotoxin exposure.

#### *Centers for Medicare & Medicaid Services (CMS)*

- Helps ensure access to high-quality medical care for subscribers to federal medical service and insurance programs (e.g., Medicare, Medicaid, Children's Health Insurance Program, Affordable Care Act market programs). HHS/CMS provides data to enable care for those with access and functional needs during response and recovery. HHS/CMS supplies regulatory waivers for federal requirements, as needed, and authorities for some healthcare actions. HHS/CMS also provides technical assistance for certifying temporary facilities.

### ***Food and Drug Administration (FDA)***

- Assures the safety, efficacy, and security of human and veterinary drugs, biological products, and medical devices. HHS/FDA also ensures the safety and security of the nation's food supply, cosmetics, and products that emit radiation. HHS/FDA authorizes making MCMs available during public health emergencies by granting Emergency Use Authorizations (EUAs), investigational new drug status, or regulatory approvals when needed and appropriate for needed drugs, biological products, or medical devices. Additionally, HHS/FDA provides technical expertise to help inform the response, the recovery strategy, and policy decisions.
- Provides key subject matter expertise and technical analysis to federal and SLTT partners regarding the human health impacts of biotoxin exposure.
- Advises federal and SLTT partners regarding clinical care and makes MCM recommendations related to biotoxins.
- Develops and ensures the safety, security, acquisition, deployment, dispensing, and effective use of biotoxin MCMs.

### ***Health Resources and Services Administration (HRSA)***

- Fosters access to quality healthcare for uninsured, isolated, or medically vulnerable people. HHS/HRSA programs and grants help build a skilled workforce and support healthcare innovation to foster health equity. HHS/HRSA can provide a communications channel with funded programs and health centers during response and recovery. While HHS/HRSA does not have direct control over program or center management, the agency helps contribute to situational awareness on resources and capabilities.

### ***National Institutes of Health (NIH)***

- Provides subject matter and technical expertise for senior leaders, health professionals, and the public, particularly to facilitate evidence-based decisions, including the causes, diagnosis, treatment, control, and prevention of diseases. HHS/NIH provides technical assistance and guidance on the public health and medical impacts of biotoxin incidents to the public safety workforce and, in coordination with other departments and agencies (D/As), to the general population, including healthcare providers.

### ***Office of Assistant Secretary of Health (OASH)***

No changes in action from the BIA.

## **Department of Homeland Security (DHS)**

### ***Federal Emergency Management Agency (FEMA)***

For additional information, refer to Appendix A of the BIA.

### *U.S. Coast Guard (USCG)*

- As the lead federal agency (LFA) in the maritime domain, DHS/USCG prevents and responds to biotoxin incidents in accordance with national and DHS policies and the National Response Framework (NRF).

### *Customs and Border Protection (CBP)*

- Responds to biotoxin incidents associated with importations at U.S. ports of entry (POEs) or domestic incidents that may involve or have a nexus with POEs, in accordance with DHS NRF directives and policies.

### *DHS Countering Weapons of Mass Destruction Office (CWMD)*

- Coordinates with domestic partners to safeguard the United States against biological threats, including biotoxins.
- Executes this mission through understanding and anticipating homeland biotoxin strategic and tactical threats and risks and providing operational support to partners to improve situational awareness, training, and decision making in a biotoxin incident.
- Manages the National Biosurveillance Integration Center (NBIC), which uses biosurveillance capabilities to provide situational awareness of biothreats, including biotoxins, and coordinates information sharing with federal, state, and local partners.

### *Office of Health Security (OHS)*

- Provides technical assistance and guidance on the public health and medical impacts of biotoxin incidents to the public safety workforce and, in coordination with other D/As, to the general population, including healthcare providers.
- Assists in characterization of the biotoxin agent of concern and provides technical interpretation and analysis of human, animal, and ecological impact modeling.

### *Science and Technology Directorate (S&T)*

- DHS/S&T is the primary research and development arm of DHS, promoting the development of homeland security technologies and providing the scientific expertise, assessments, and knowledge products that enable risk-based funding and deployment decisions by the Homeland Security Enterprise (HSE).
- For incidents involving suspected biotoxins, DHS/S&T performs rapid toxin analyses through the National Biological Threat Characterization Center (NBTCC) at the National Biodefense Analysis and Countermeasures Center (NBACC) to rapidly fill knowledge gaps in biotoxin threat characteristics crucial to the operational response (e.g., environmental stability, decontamination effectiveness, toxic dose estimation).
- DHS/S&T, in coordination with the Assistant Secretary for CWMD, produces the Chemical, Biological, Radiological, and Nuclear (CBRN) Strategic Risk Assessment. Since this assessment includes a significant number of biotoxin scenarios, these



assessments are used to inform immediate mitigation measures, including protective and consequence management efforts.

- DHS/S&T provides timely and accurate input and guidance from technical subject matter experts (SMEs) on biotoxins, leveraging experts from the NBACC, the Chemical Security Analysis Center (CSAC), and the Hazard Awareness and Characterization Technology Center (HAC-TC).

## **Department of Justice (DOJ)**

### *Federal Bureau of Investigation (FBI)*

- Leads and coordinates the operational law enforcement response to intentional biotoxin incidents, including investigative, crime scene, forensic, and other activities, to identify, apprehend, and prosecute perpetrators, as appropriate, and to prevent subsequent attacks.
- Conducts joint investigations, as appropriate, with health authorities (providers of both human and veterinary healthcare) to protect public health and safety and attribute the intentional biotoxin incident.

## **U.S. Department of Agriculture (USDA)**

No changes in action from the BIA.

## **Department of the Interior (DOI)**

No changes in action from the BIA.

## **Environmental Protection Agency (EPA)**

No changes in action from the BIA.

## **Department of Defense (DOD)**

No changes in action from the BIA.

## **Department of State (DOS)**

No changes in action from the BIA.

## **Department of Transportation (DOT)**

No changes in action from the BIA.

## **Department of Labor (DOL)**

No changes in action from the BIA.

## **State, Local, Tribal, and Territorial (SLTT) Governments**

No changes in action from the BIA.

## **Healthcare Coalitions**

No changes in action from the BIA.

## **Private Sector**

No changes in action from the BIA.

## **HHS as Lead Federal Agency (Non-Stafford Act)**

For more information on the role of HHS as the LFA in biological incidents, refer to the BIA.

## **Support and Coordination Elements**

No changes in action from the BIA.

# Appendix B: Intelligence and Surveillance

---

For information on intelligence and surveillance, refer to the *Biological Incident Annex (BIA) to the Response and Recovery Federal Interagency Operational Plan (FIOP)*.

This page is intentionally left blank.

# Appendix C: Operations

---

For information on operations, refer to the *Biological Incident Annex (BIA) to the Response and Recovery Federal Interagency Operational Plan (FIOP)*.

This page is intentionally left blank.

# Appendix D: Resource Management

---

For information on resource management, refer to the *Biological Incident Annex (BIA) to the Response and Recovery Federal Interagency Operational Plan (FIOP)*.

This page is intentionally left blank.



# Appendix U: Outstanding Policy Issues

---

For information on outstanding policy issues, refer to the *Biological Incident Annex (BIA) to the Response and Recovery Federal Interagency Operational Plan (FIOP)*.

This page is intentionally left blank.

# Appendix V: Authorities and Other References

---

For information on primary authorities, refer to the *Biological Incident Annex (BIA) to the Response and Recovery Federal Interagency Operational Plan (FIOP)*.

This page is intentionally left blank.

# Appendix W: Glossary

---

**Biotoxins:** Biologically derived toxins that are either naturally occurring or manmade from a variety of sources and, therefore, have varying uses, including those used medicinally and others that are harmful (e.g., botulinum neurotoxin, ricin, saxitoxin, and mycotoxins).

**Biotoxin threat or incident:** A biotoxin threat or incident within the scope of this addendum is one that refers to a situation in which a toxin of biological origin results in a significant national incident.

**Botulinum Neurotoxin:** A toxin produced by the bacterium *Clostridium botulinum* that is the most poisonous biological substance known. Botulinum toxin acts as a neurotoxin.

**Hazard Awareness and Characterization Technology Center (HAC-TC):** Conducts enduring and forward-looking basic and applied research in cross-cutting scientific, engineering, and technology areas to detect, mitigate, and counter chemical, biological, and explosive (CBE) threats.

**Mycotoxins:** Naturally occurring toxins produced by certain molds (fungi); can be found in food. Mycotoxins can cause a variety of adverse health effects and pose a serious health threat to both humans and livestock. The adverse health effects range from acute poisoning to long-term effects such as immune deficiency and cancer.

**New variant(s):** A new variant has different functional properties to the original virus and, if it becomes established in a population, it is sometimes referred to as a new strain of the virus.

**Ricin:** An extremely toxic plant protein derived from the seeds of the castor bean plant (*Ricinus communis*). It is easily extracted from the castor bean meal that remains as a by-product of castor oil production. Ricin causes toxicity by inhibiting the formation (synthesis) of proteins in the cells of the exposed individual. Ricin may cause severe allergic reactions. Exposure to even a small amount of ricin may be fatal.

**Sampling Analysis Plan (SAP):** Assists organizations in documenting the procedural and analytical requirements for one-time or time-limited projects involving the collection of water, soil, sediment, or other samples taken to characterize areas of potential environmental contamination.

**Saxitoxins:** Neurotoxic alkaloids that include STX, gonyautoxin, neosaxitoxin, and decarbamoylsaxitoxin. These are highly selective and potent blockers of voltage-dependent sodium channels in motor nerves, which causes skeletal muscle paralysis.

**Threat Credibility Evaluation (TCE):** An FBI-led process, with both federal and SLTT partners where appropriate, that leverages available intelligence and/or case information to evaluate the credibility of a threat, to include technical feasibility, operational practicality, and adversarial intent.

**Toxic syndrome:** A constellation of toxic effects comprising a set of clinical fingerprints for a group of toxic chemicals. Recognition is important because it provides a tool for rapid detection of the suspected cause and can focus the differential diagnosis to consideration of only a few chemicals with similar toxic effects.

# Appendix X: Execution Checklist

The Biotoxins Execution Checklist (Table X-4) provides examples of activities or tasks to be performed during the response to a biotoxin incident. Tasks are listed by phase, Community Lifeline, Line of Effort (LOE), objective, Core Capability, response capability, Emergency Support Function (ESF)/Recovery Support Function (RSF) and lead federal agency (LFA). ESFs/RSFs and planning partners support the development and refinement of detailed resource requirements to support the tasks outlined in the Execution Checklist.

The Execution Checklist is the base planning document to help organize federal response efforts if or as a biotoxin incident becomes unmanageable at the state, local, tribal, or territorial (SLTT) level. Additionally, the Execution Checklist may be modified to fit specific incident needs at the discretion of the LFA or senior response leadership.

A Community Lifeline represents a set of indispensable services that enable the operation of government functions and critical business considered essential for maintaining human health and safety and economic security. FEMA has identified seven Community Lifelines, each comprising multiple components that represent the core services provided within that lifeline. Currently five of those lifelines are pertinent to this plan, as reflected in Table X-1 below. The table lists the number of tasks for each lifeline, by phase, and includes the primary or lead ESFs responsible for the tasks. The status of the seven Community Lifelines help senior leaders refine the activation or demobilization needs of response and recovery resources throughout incident operations.

**Table X-1: Number of Tasks Per Phase Per Community Lifeline, Along with Primary/Lead ESFs**

Community Lifelines	Phase 1c	Phase 2a	Phase 2b	Phase 2c	Phase 3	ESFs
Safety and Security (Law Enforcement/Security; Fire Services; Search and Rescue; Government Services; Community Safety)	12	20	19	20	2	#5, #13
Food, Water, Shelter (Food; Water; Shelter; Agriculture)	TBD	1	1	1	TBD	#6
Health and Medical (Medical Care; Public Health; Patient Movement; Medical Supply Chain; Fatality Management)	33	38	11	9	3	#5, #8
Energy (Power; Fuel)	TBD	TBD	TBD	TBD	TBD	TBD
Communications (Infrastructure; Responder Communications; Alerts, Warnings and Messages; Financial Services; 911 and Dispatch)	2	1	1	2	TBD	#5

Community Lifelines	Phase 1c	Phase 2a	Phase 2b	Phase 2c	Phase 3	ESFs
Transportation (Highway/Roadway; Mass Transit; Railway; Aviation; Maritime)	TBD	TBD	TBD	TBD	TBD	TBD
Hazardous Materials (Facilities; HAZMAT, Pollutants, Contaminants)	2	4	5	3	3	#10

LOEs are the common functions that must be performed during emergencies, as outlined in the Federal Emergency Management Agency (FEMA) National Response Framework (NRF) and *Response and Recovery Federal Interagency Operational Plan (FIOP)*. LOEs are aimed at restoring the critical services provided through lifeline components that have been affected by a disaster. LOEs are the activities that federal interagency response can use to fill capability gaps and manage the consequences of the incident while supporting Lifeline Stabilization Targets and Recovery Outcomes. LOEs articulate a response and recovery strategy by sequencing Intermediate Objectives to reach the desired end state. Many scenarios may require multiple LOE's to stabilize a single Community Lifeline. Table X-2 identifies five LOEs and the number of tasks which have been associated with the LOEs by phase. The analysis includes the primary ESF and LFA associated with the associated tasks.

**Table X-2: Number of Tasks Per Phase Per Line of Effort, Along with Primary ESFs/Lead Agencies**

Biotoxins Line of Effort	Phase 1c	Phase 2a	Phase 2b	Phase 2c	Phase 3	ESFs
Detect, Prevent, Characterize, and Attribute the Biotxin Incident	26	29	20	25	7	(LFAs: CDC, DHS, DHS/S&T, DOJ, EPA, FBI, FDA, HHS, NIH, OSHA)
Medical Countermeasures (MCMs)	4	9	TBD	TBD	TBD	(LFAs: ASPR, CDC, DHS, FDA, HHS, NIH)
Healthcare Resilience	3	3	2	4	4	#8 (LFAs: ASPR, CDC, CMS, DHS)
Public Health and Safety	13	11	11	12	2	#5, #8, #13 (LFAs: ASPR, CBP, CDC, CISA, CMS, DOJ, FBI, FEMA, USGS)
Public Health Supply Chain	TBD	TBD	TBD	TBD	TBD	#8 (LFAs: ASPR)

The Department of Health and Human Services (HHS)/Centers for Disease Control and Prevention (CDC) established the Public Health Preparedness and Response Capabilities: National Standards for State and Local Planning, a set of 15 distinct, yet interrelated,



capability standards designed to advance emergency preparedness and response capacity. These standards help emergency preparedness planning and further formalize public health agency ESF #8 role(s) in partnership with emergency management agencies. Each capability standard identifies priority resource elements that are relevant to both routine public health activities and essential public health services. This helps support an “everyday use” model that applies capability standards to improve day-to-day effectiveness. It also builds a stronger foundation from which a jurisdictional public health agency can surge resources when an emergency incident occurs. Table X-3 analyzes response tasks and their links with the HHS/CDC Public Health Preparedness and Response Capabilities. These tasks have been identified by phase, which helps in prioritizing strategies and resources needed to support them.

**Table X-3: Number of Tasks Per Phase and Per Public Health Preparedness and Response Capability**

Public Health Preparedness and Response Capability	Phase 1c	Phase 2a	Phase 2b	Phase 2c	Phase 3	ESFs
Community Preparedness	8	2	1	1	2	TBD
Community Recovery	TBD	TBD	TBD	TBD	1	TBD
Emergency Operations Coordination	10	19	11	12	5	TBD
Emergency Public Information and Warning	3	1	1	2	1	TBD
Fatality Management	TBD	1	TBD	TBD	TBD	TBD
Information Sharing	3	5	2	2	TBD	TBD
Mass Care	TBD	1	TBD	TBD	TBD	TBD
Medical Countermeasure (MCM) Dispensing and Administration	TBD	TBD	TBD	TBD	TBD	TBD
Medical Materiel Management and Distribution	2	1	1	1	TBD	TBD
Medical Surge	1	1	1	TBD	TBD	TBD
Non-pharmaceutical Interventions (NPIs)	1	TBD	TBD	TBD	TBD	TBD
Public Health Laboratory Testing	1	1	TBD	TBD	TBD	TBD
Public Health Surveillance and Epidemiological Investigation	10	11	5	11	4	TBD
Responder Safety and Health	1	3	1	TBD	TBD	TBD
Volunteer Management	TBD	TBD	TBD	TBD	TBD	TBD

**Table X-4: Biotoxins Execution Checklist, by Phase**

Phase	Community Lifeline	LOE	Objective(s)	Core Capability	Public Health Preparedness and Response Capability(ies)	ESF/RSF	LFA	Task
1	Health and Medical	Medical Counter-measures	TBD	Logistics and Supply Chain Management	Medical Materiel Management and Distribution	TBD	HHS	Evaluate the Strategic National Stockpile (SNS) in anticipation of SLTT resource requests (e.g., personal protective equipment [PPE]) and actively engage with SLTT health departments in reviewing their MCM stockpiles and/or contingency plans for resources.
1	Safety and Security	Medical Counter-measures	TBD	Logistics and Supply Chain Management	Medical Materiel Management and Distribution	TBD	HHS	Evaluate the SNS in anticipation of SLTT resource requests (e.g., PPE) and actively engage with SLTT health departments in reviewing their MCM stockpiles and/or contingency plans for resources.
1a	Health and Medical	ALL	TBD	Public Health, Healthcare, and Emergency Medical Services	Community Preparedness	TBD	HHS/CDC	Provide funding to SLTTs and public health partner organizations for public health emergency preparedness and response.
1a	Health and Medical	Detect, Prevent, Characterize, and Attribute the Biotoxin Incident	Query surveillance systems for evidence of suspicious events involving biotoxins.	Threats and Hazards Identification	Public Health Surveillance and Epidemiological Investigation	TBD	DHS	Provide biosurveillance capabilities and coordinate information sharing with federal partners on health-related threats to humans, animals, and plants.
1a	Safety and Security	ALL	TBD	Operational Coordination	Community Preparedness	TBD	DHS	Coordinate federal preparedness activities and operations within the U.S. to respond to and recover from terrorist attacks, major disasters, and other emergencies, including biotoxin incidents.

Phase	Community Lifeline	LOE	Objective(s)	Core Capability	Public Health Preparedness and Response Capability(ies)	ESF/RSF	LFA	Task
1a	Safety and Security	Detect, Prevent, Characterize, and Attribute the Biotoxin Incident	Preparedness	Planning	Emergency Public Information and Warning	N/A	DOJ/FBI	Conduct (animal/plant or human health) joint criminal-epidemiological workshops and training with federal and SLTT law enforcement, health, and emergency responders.
1a	Safety and Security	Detect, Prevent, Characterize, and Attribute the Biotoxin Incident	Preparedness	Operational Coordination	Emergency Public Information and Warning	N/A	DOJ/FBI	Conduct (animal/plant or human health) joint criminal-epidemiological workshops and training with federal and SLTT law enforcement, health, and emergency responders.
1a	Safety and Security	Detect, Prevent, Characterize, and Attribute the Biotoxin Incident	Preparedness	Planning	Emergency Public Information and Warning	N/A	HHS/CDC	Conduct (animal/plant or human health) joint criminal-epidemiological workshops and training with federal and SLTT law enforcement, health, and emergency responders.
1a	Safety and Security	Detect, Prevent, Characterize, and Attribute the Biotoxin Incident	Preparedness	Operational Coordination	Emergency Public Information and Warning	N/A	HHS/CDC	Conduct (animal/plant or human health) joint criminal-epidemiological workshops and training with federal and SLTT law enforcement, health, and emergency responders.
1a	Safety and Security	Detect, Prevent, Characterize, and Attribute the Biotoxin Incident	Query surveillance systems for evidence of suspicious events involving biotoxins.	Threats and Hazards Identification	Public Health Surveillance and Epidemiological Investigation	TBD	DHS	Provide biosurveillance capabilities and coordinate information sharing with federal partners on health-related threats to humans, animals, and plants.

Phase	Community Lifeline	LOE	Objective(s)	Core Capability	Public Health Preparedness and Response Capability(ies)	ESF/RSF	LFA	Task
1a	Safety and Security	Public Health and Safety	TBD	Environmental Response/ Health and Safety	TBD	TBD	HHS/CMS	Perform Life Safety Code (LSC) surveys of long-term care facilities, to include parts of the physical environment standards applicable to long-term care facilities.
1a	TBD	Detect, Prevent, Characterize, and Attribute the Biotoxin Incident	TBD	Operational Coordination	Community Preparedness	ESF #5: Information and Planning	DHS/S&T	Leverage the results of the ongoing DHS Chemical, Biological, Radiological, and Nuclear (CBRN) Strategic Risk Assessment, a scenario-based risk assessment that includes a range of biotoxin scenarios, to help identify priorities for protective and consequence management efforts.
1a	TBD	Detect, Prevent, Characterize, and Attribute the Biotoxin Incident	TBD	Operational Coordination	Community Preparedness	ESF #5: Information and Planning	DHS/S&T	Leverage the results of the ongoing DHS CBRN Strategic Risk Assessment, a scenario-based risk assessment that includes a range of biotoxin scenarios, to help identify priorities for protective and consequence management efforts.
1a	TBD	Detect, Prevent, Characterize, and Attribute the Biotoxin Incident	TBD	Situational Assessment	Community Preparedness	ESF #5: Information and Planning	DHS/S&T	Leverage the results of the ongoing DHS CBRN Strategic Risk Assessment, a scenario-based risk assessment that includes a range of biotoxin scenarios, to help identify priorities for protective and consequence management efforts.
1a	TBD	Detect, Prevent, Characterize, and Attribute the Biotoxin Incident	TBD	Threats and Hazards Identification	Public Health Surveillance and Epidemiological Investigation	Non-ESF/RSF specific	DHS/S&T	Provide technical subject matter experts (SMEs) to advise responses to biotoxin events, to include scientists at DHS-led laboratories with expertise in biotoxins.

Phase	Community Lifeline	LOE	Objective(s)	Core Capability	Public Health Preparedness and Response Capability(ies)	ESF/RSF	LFA	Task
1b	Communications	Detect, Prevent, Characterize, and Attribute the Biotoxin Incident	TBD	Public Information and Warning	Emergency Public Information and Warning	TBD	TBD	Initiate coordinated public messaging with U.S. Government (USG) partners on initial public health measures to implement to reduce human exposure.
1b	Hazardous Materials	Detect, Prevent, Characterize, and Attribute the Biotoxin Incident	Query surveillance systems for evidence of suspicious events involving biotoxins.	Threats and Hazards Identification	Public Health Surveillance and Epidemiological Investigation	TBD	DHS	Provide biosurveillance capabilities and coordinate information sharing with federal partners on health-related threats to humans, animals, and plants.
1b	Health and Medical	ALL	TBD	Public Health, Healthcare, and Emergency Medical Services	Community Preparedness	TBD	HHS/CDC	Provide funding to SLTTs and public health partner organizations for public health emergency preparedness and response.
1b	Health and Medical	ALL	TBD	Operational Coordination	Emergency Operations Coordination	TBD	HHS	Coordinate with other federal agencies (OFAs) and impacted SLTT, private sector, and non-governmental partners, as appropriate, in responding to a biotoxin incident.
1b	Health and Medical	ALL	TBD	Public Health, Healthcare, and Emergency Medical Services	Emergency Operations Coordination	TBD	HHS/CDC	Coordinate with SLTT health departments, partner organizations, as well as FEMA and other interagency partners on a regular basis for preparedness and response planning.
1b	Health and Medical	ALL	TBD	Public Health, Healthcare, and Emergency Medical Services	Emergency Operations Coordination	TBD	HHS/ASPR	HHS Regional Emergency Coordinators (RECs) work with state(s) and coordinate with FEMA on a regular basis.

Phase	Community Lifeline	LOE	Objective(s)	Core Capability	Public Health Preparedness and Response Capability(ies)	ESF/RSF	LFA	Task
1b	Health and Medical	Detect, Prevent, Characterize, and Attribute the Biotoxin Incident	Query surveillance systems for evidence of suspicious events involving biotoxins.	Threats and Hazards Identification	Public Health Surveillance and Epidemiological Investigation	TBD	DHS	Provide biosurveillance capabilities and coordinate information sharing with federal partners on health-related threats to humans, animals, and plants.
1b	Health and Medical	Detect, Prevent, Characterize, and Attribute the Biotoxin Incident	TBD	Public Health, Healthcare, and Emergency Medical Services	Public Health Surveillance and Epidemiological Investigation	TBD	HHS/FDA	Provide key subject matter expertise and technical analysis to federal and SLTT partners regarding the human health impacts of toxin exposure.
1b	Health and Medical	Detect, Prevent, Characterize, and Attribute the Biotoxin Incident	TBD	Situational Assessment	Public Health Surveillance and Epidemiological Investigation	ESF #8: Public Health and Medical Services	HHS/CDC	Enhance situational awareness through increased epidemiological studies at the federal and SLTT levels to gain a better understanding of the biological agent threat.
1b	Health and Medical	Detect, Prevent, Characterize, and Attribute the Biotoxin Incident	TBD	Public Information and Warning	Emergency Public Information and Warning	TBD	HHS	Initiate coordinated public messaging with USG partners on initial public health measures to implement to reduce human exposure.
1b	Health and Medical	Medical Countermeasures	TBD	Logistics and Supply Chain Management	Medical Countermeasure Dispensing and Administration	TBD	HHS	Evaluate the SNS in anticipation of SLTT resource requests and actively engage with SLTT health departments in reviewing their MCM stockpiles and/or contingency plans for resources.

Phase	Community Lifeline	LOE	Objective(s)	Core Capability	Public Health Preparedness and Response Capability(ies)	ESF/RSF	LFA	Task
1b	Health and Medical	Medical Counter-measures	TBD	Logistics and Supply Chain Management	Medical Materiel Management and Distribution	TBD	HHS	Evaluate the SNS in anticipation of SLTT resource requests and actively engage with SLTT health departments in reviewing their MCM stockpiles and/or contingency plans for resources.
1b	Health and Medical	Public Health and Safety	TBD	Public Health, Healthcare, and Emergency Medical Services	Community Preparedness	TBD	HHS/ASPR	Facilitate preparedness for and response to biological incidents to protect public health and the environment.
1b	Health and Medical	Public Health and Safety	TBD	Public Health, Healthcare, and Emergency Medical Services	Community Preparedness	TBD	HHS/CDC	Facilitate preparedness for and response to biological incidents to protect public health and the environment.
1b	Health and Medical	Public Health and Safety	TBD	Public Health, Healthcare, and Emergency Medical Services	Community Preparedness	TBD	EPA	Facilitate preparedness for and response to biological incidents to protect public health and the environment.
1b	Health and Medical	Public Health and Safety	TBD	Public Health, Healthcare, and Emergency Medical Services	Community Preparedness	TBD	HHS	Facilitate preparedness for and response to biological incidents to protect public health and the environment.
1b	Safety and Security	ALL	TBD	Operational Coordination	Community Preparedness	TBD	DHS	Coordinate federal preparedness activities and operations within the U.S to respond to and recover from terrorist attacks, major disasters, and other emergencies, including biotoxin incidents.

Phase	Community Lifeline	LOE	Objective(s)	Core Capability	Public Health Preparedness and Response Capability(ies)	ESF/RSF	LFA	Task
1b	Safety and Security	Public Health and Safety	TBD	Operational Coordination	Emergency Operations Coordination	ESF #5: Information and Planning	DHS/FEMA	FEMA region coordinates with state and local emergency management organizations.
1b	Safety and Security	Public Health and Safety	TBD	Operational Coordination	Emergency Operations Coordination	ESF #5: Information and Planning	DHS/FEMA	FEMA region coordinates with FEMA Headquarters, Homeland Security Advisors, and fusion centers.
1b	Safety and Security	Public Health and Safety	TBD	Environmental Response/ Health and Safety	TBD	TBD	HHS/CMS	Perform LSC surveys of long-term care facilities, to include parts of the physical environment standards applicable to long-term care facilities.
1b	TBD	Detect, Prevent, Characterize, and Attribute the Biotxin Incident	TBD	Operational Coordination	Community Preparedness	ESF #5: Information and Planning	DHS/S&T	Leverage the results of the ongoing DHS CBRN Strategic Risk Assessment, a scenario-based risk assessment that includes a range of biotoxin scenarios, to help identify priorities for protective and consequence management efforts.
1b	TBD	Detect, Prevent, Characterize, and Attribute the Biotxin Incident	TBD	Situational Assessment	Community Preparedness	ESF #5: Information and Planning	DHS/S&T	Leverage the results of the ongoing DHS CBRN Strategic Risk Assessment, a scenario-based risk assessment that includes a range of biotoxin scenarios, to help identify priorities for protective and consequence management efforts.
1b	TBD	Detect, Prevent, Characterize, and Attribute the Biotxin Incident	TBD	Threats and Hazards Identification	Public Health Surveillance and Epidemiological Investigation	Non-ESF/RSF specific	DHS/S&T	Provide technical SMEs to advise responses to biotoxin events, to include scientists at DHS-led laboratories with expertise in biotoxins.



Phase	Community Lifeline	LOE	Objective(s)	Core Capability	Public Health Preparedness and Response Capability(ies)	ESF/RSF	LFA	Task
1b	TBD	Detect, Prevent, Characterize, and Attribute the Biotoxin Incident	TBD	Threats and Hazards Identification	Public Health Surveillance and Epidemiological Investigation	Non-ESF/RSF specific	DHS/S&T	Provide technical SMEs to advise responses to biotoxin events, to include scientists at DHS-led laboratories with expertise in biotoxins.
1b	TBD	Public Health and Safety	TBD	TBD	TBD	TBD	DHS/CISA	Conduct contingency outreach to owners and operators of critical infrastructure regarding the evolving biotoxin incident.
1b	TBD	TBD	TBD	Operational Coordination	Information Sharing	All	DHS/CISA	Share information and build greater trust to make critical infrastructure and key resources (CIKR) secure.
1c	ALL	ALL	TBD	Operational Coordination	Emergency Operations Coordination	TBD	DHS/FEMA	Manage coordinating centers, funding sources, non-medical supply resourcing, and supporting ESFs/RSFs.
1c	ALL	ALL	TBD	Logistics and Supply Chain Management	Medical Materiel Management and Distribution	TBD	DHS/FEMA	Manage coordinating centers, funding sources, non-medical supply resourcing, and supporting ESFs/RSFs.
1c	Communi-cations	Detect, Prevent, Characterize, and Attribute the Biotoxin Incident	TBD	Public Information and Warning	Emergency Public Information and Warning	TBD	HHS/CDC	Initiate coordinated public messaging with USG partners on initial public health measures to implement to reduce human exposure.

Phase	Community Lifeline	LOE	Objective(s)	Core Capability	Public Health Preparedness and Response Capability(ies)	ESF/RSF	LFA	Task
1c	Communications	TBD	TBD	Operational Communications	Information Sharing	ESF #5: Information and Planning	DHS/CISA	Sustain communications with the respective sector coordinating councils and sector-specific government coordinating councils on appropriate information sharing related to the evolving biotoxin incident.
1c	Hazardous Materials	Detect, Prevent, Characterize, and Attribute the Biotoxin Incident	TBD	Threats and Hazards Identification	Emergency Operations Coordination	ESF #10: Oil and Hazardous Materials Response	EPA	Assess risks for potentially contaminated indoor/outdoor areas, assets, and infrastructure.
1c	Hazardous Materials	Detect, Prevent, Characterize, and Attribute the Biotoxin Incident	Query surveillance systems for evidence of suspicious events involving biotoxins.	Threats and Hazards Identification	Public Health Surveillance and Epidemiological Investigation	TBD	DHS	Provide biosurveillance capabilities and coordinate information sharing with federal partners on health-related threats to humans, animals, and plants.
1c	Health and Medical	ALL	TBD	Public Health, Healthcare, and Emergency Medical Services	Community Preparedness	TBD	HHS/CDC	Provide funding to SLTTs and public health partner organizations for public health emergency preparedness and response.
1c	Health and Medical	ALL	TBD	Operational Coordination	Emergency Operations Coordination	TBD	HHS	Coordinate with other federal agencies and impacted SLTT, private sector, and non-governmental partners, as appropriate, in responding to a biological incident.

Phase	Community Lifeline	LOE	Objective(s)	Core Capability	Public Health Preparedness and Response Capability(ies)	ESF/RSF	LFA	Task
1c	Health and Medical	ALL	TBD	Public Health, Healthcare, and Emergency Medical Services	Medical Surge	TBD	DHS/FEMA	Develop medical surge activities with HHS, National Disaster Medical System (NDMS), Office of Personnel Management (OPM), and other federal departments/agencies (D/As).
1c	Health and Medical	ALL	TBD	Public Health, Healthcare, and Emergency Medical Services	TBD	TBD	HHS/CDC	Coordinate with state and local public health entities.
1c	Health and Medical	Control the Spread of Disease	TBD	Public Health, Healthcare, and Emergency Medical Services	Public Health Surveillance and Epidemiological Investigation	TBD	HHS/CDC	Provide forecasting through coordinated disease modeling entities (federal and academic centers of excellence) to inform USG and SLTT organizations of predicted new cases, hospitalizations, and fatalities in support of resource request management.
1c	Health and Medical	Detect, Prevent, Characterize, and Attribute the Biotxin Incident	TBD	Operational Coordination	Emergency Operations Coordination	TBD	TBD	LFA should initiate intra-departmental component coordination to address medical and public health impacts as well as to begin to evaluate effectiveness of existing MCMs.
1c	Health and Medical	Detect, Prevent, Characterize, and Attribute the Biotxin Incident	TBD	Public Information and Warning	Emergency Public Information and Warning	TBD	TBD	Initiate coordinated public messaging with USG partners on initial public health measures to implement to reduce human exposure.

Phase	Community Lifeline	LOE	Objective(s)	Core Capability	Public Health Preparedness and Response Capability(ies)	ESF/RSF	LFA	Task
1c	Health and Medical	Detect, Prevent, Characterize, and Attribute the Biotoxin Incident	TBD	Operational Coordination	Information Sharing	TBD	TBD	LFA should initiate early unified coordination with appropriate partners, starting with ESF #8 coordinating agencies, to identify potential response capabilities required currently and in the near future if the biological incident increases in size and/or complexity.
1c	Health and Medical	Detect, Prevent, Characterize, and Attribute the Biotoxin Incident	TBD	Operational Coordination	Public Health Surveillance and Epidemiological Investigation	TBD	TBD	LFA should initiate early unified coordination with appropriate partners, starting with ESF #8 coordinating agencies, to identify potential response capabilities required currently and in the near future if the biological incident increases in size and/or complexity.
1c	Health and Medical	Detect, Prevent, Characterize, and Attribute the Biotoxin Incident	TBD	Public Health, Healthcare, and Emergency Medical Services	Community Preparedness	TBD	HHS	Advise on population-based public health and clinical preventive services, including blood and tissue product supply issues.

Phase	Community Lifeline	LOE	Objective(s)	Core Capability	Public Health Preparedness and Response Capability(ies)	ESF/RSF	LFA	Task
1c	Health and Medical	Detect, Prevent, Characterize, and Attribute the Biotoxin Incident	Conduct assessments and identify effective mitigation solutions for worker safety and health problems related to exposure to the biological agent and other hazards workers face during response and recovery operations.	Threats and Hazards Identification	Emergency Operations Coordination	ESF #8: Public Health and Medical Services	HHS/CDC	Assess risks for potentially contaminated indoor/outdoor areas, assets, and infrastructure.
1c	Health and Medical	Detect, Prevent, Characterize, and Attribute the Biotoxin Incident	Conduct assessments and identify effective mitigation solutions for worker safety and health problems related to exposure to the biological agent and other hazards workers face during response and recovery operations.	Threats and Hazards Identification	Emergency Operations Coordination	ESF #8: Public Health and Medical Services	DOL/OSHA	Assess risks for potentially contaminated indoor/outdoor areas, assets, and infrastructure.
1c	Health and Medical	Detect, Prevent, Characterize, and Attribute the Biotoxin Incident	TBD	Public Health, Healthcare, and Emergency Medical Services	Public Health Laboratory Testing	TBD	HHS/CDC	Provide laboratory support for the identification, confirmation, characterization, and drug susceptibility of the biological agent.

Phase	Community Lifeline	LOE	Objective(s)	Core Capability	Public Health Preparedness and Response Capability(ies)	ESF/RSF	LFA	Task
1c	Health and Medical	Detect, Prevent, Characterize, and Attribute the Biotoxin Incident	Query surveillance systems for evidence of suspicious events involving biotoxins.	Threats and Hazards Identification	Public Health Surveillance and Epidemiological Investigation	TBD	DHS	Provide biosurveillance capabilities and coordinate information sharing with federal partners on health-related threats to humans, animals, and plants.
1c	Health and Medical	Detect, Prevent, Characterize, and Attribute the Biotoxin Incident	TBD	Public Health, Healthcare, and Emergency Medical Services	Public Health Surveillance and Epidemiological Investigation	TBD	HHS/CDC	Provide key subject matter expertise and technical analysis regarding the human health impacts of toxin exposure to federal and SLTT partners.
1c	Health and Medical	Detect, Prevent, Characterize, and Attribute the Biotoxin Incident	TBD	Public Health, Healthcare, and Emergency Medical Services	Public Health Surveillance and Epidemiological Investigation	TBD	HHS/FDA	Provide key subject matter expertise and technical analysis regarding the human health impacts of toxin exposure to federal and SLTT partners.
1c	Health and Medical	Detect, Prevent, Characterize, and Attribute the Biotoxin Incident	TBD	Public Health, Healthcare, and Emergency Medical Services	Public Health Surveillance and Epidemiological Investigation	TBD	HHS/CDC	Conduct epidemiologic and surveillance activities to define cases, identify the populations at risk, and determine the source of exposure.
1c	Health and Medical	Detect, Prevent, Characterize, and Attribute the Biotoxin Incident	TBD	Situational Assessment	Public Health Surveillance and Epidemiological Investigation	ESF #8: Public Health and Medical Services	HHS/CDC	Enhance situational awareness through increased epidemiological studies at the federal and SLTT levels to gain a better understanding of the biological agent threat.

Phase	Community Lifeline	LOE	Objective(s)	Core Capability	Public Health Preparedness and Response Capability(ies)	ESF/RSF	LFA	Task
1c	Health and Medical	Detect, Prevent, Characterize, and Attribute the Biotoxin Incident	TBD	Public Health, Healthcare, and Emergency Medical Services	TBD	TBD	HHS/NIH	Conduct research on emerging and re-emerging infectious diseases and facilitate the discovery and development of MCMs, including diagnostics, therapeutics, and vaccines, to prevent, treat, and control diseases in the U.S. and globally.
1c	Health and Medical	Detect, Prevent, Characterize, and Attribute the Biotoxin Incident	TBD	Public Health, Healthcare, and Emergency Medical Services	TBD	TBD	HHS/CDC	Conduct research on emerging and re-emerging infectious diseases and facilitate the discovery and development of MCMs, including diagnostics, therapeutics, and vaccines, to prevent, treat, and control diseases in the U.S. and globally.
1c	Health and Medical	Detect, Prevent, Characterize, and Attribute the Biotoxin Incident	TBD	Public Health, Healthcare, and Emergency Medical Services	TBD	TBD	HHS/NIH	Provide subject matter and technical expertise for senior leader decisions, health professionals, and the public. Topics include causes, diagnosis, treatment, control, and prevention of diseases.
1c	Health and Medical	Detect, Prevent, Characterize, and Attribute the Biotoxin Incident	TBD	Public Health, Healthcare, and Emergency Medical Services	TBD	TBD	HHS/CDC	Provide subject matter and technical expertise for senior leader decisions, health professionals, and the public. Topics include causes, diagnosis, treatment, control, and prevention of diseases.
1c	Health and Medical	Healthcare Resilience	TBD	TBD	Emergency Operations Coordination	ESF #8: Public Health and Medical Services	HHS/CMS	Provide data to enable provision of care for those with access and functional needs during the response and recovery.

Phase	Community Lifeline	LOE	Objective(s)	Core Capability	Public Health Preparedness and Response Capability(ies)	ESF/RSF	LFA	Task
1c	Health and Medical	Healthcare Resilience	TBD	TBD	Emergency Public Information and Warning	ESF #8: Public Health and Medical Services	HHS/CMS	Provide data to enable provision of care for those with access and functional needs during the response and recovery.
1c	Health and Medical	Healthcare Resilience	TBD	Public Health, Healthcare, and Emergency Medical Services	Nonpharmaceutical Interventions	TBD	HHS/CDC	Provide guidance on non-pharmaceutical mitigation interventions and strategies to assist with the containment and control of infectious agents.
1c	Health and Medical	Medical Countermeasures	TBD	Logistics and Supply Chain Management	Medical Countermeasure Dispensing and Administration	TBD	HHS/ASPR	Evaluate the SNS in anticipation of SLTT resource requests (e.g., PPE) and actively engage with SLTT health departments in reviewing their MCM stockpiles and/or contingency plans for resources.
1c	Health and Medical	Medical Countermeasures	TBD	Public Health, Healthcare, and Emergency Medical Services	Medical Countermeasure Dispensing and Administration	TBD	HHS/CDC	Advise federal and SLTT partners regarding clinical care and MCMs recommendations for biotoxins.
1c	Health and Medical	Medical Countermeasures	TBD	Public Health, Healthcare, and Emergency Medical Services	Medical Countermeasure Dispensing and Administration	TBD	HHS/FDA	Advise federal and SLTT partners regarding clinical care and MCMs recommendations for biotoxins.
1c	Health and Medical	Medical Countermeasures	TBD	Logistics and Supply Chain Management	Medical Materiel Management and Distribution	TBD	HHS/ASPR	Evaluate the SNS in anticipation of SLTT resource requests (e.g., PPE) and actively engage with SLTT health departments in reviewing their MCM stockpiles and/or contingency plans for resources.



Phase	Community Lifeline	LOE	Objective(s)	Core Capability	Public Health Preparedness and Response Capability(ies)	ESF/RSF	LFA	Task
1c	Health and Medical	Public Health and Safety	TBD	Public Health, Healthcare, and Emergency Medical Services	Community Preparedness	TBD	DHS/USCG	Facilitate preparedness for and response to biotoxin incidents to protect public health and the environment.
1c	Health and Medical	Public Health and Safety	TBD	Public Health, Healthcare, and Emergency Medical Services	Community Preparedness	TBD	HHS/CDC	Facilitate preparedness for and response to biotoxin incidents to protect public health and the environment.
1c	Health and Medical	Public Health and Safety	TBD	Health and Social Services	Emergency Operations Coordination	ESF #8: Public Health and Medical Services	HHS/CMS	Supply regulatory waivers and modifications for federal requirements, as needed, and authorities for some healthcare actions.
1c	Health and Medical	TBD	TBD	Public Health, Healthcare, and Emergency Medical Services	Community Preparedness	TBD	TBD	Initiate national-level unified coordination; state(s) would be encouraged to prepare for appearance of domestic cases.
1c	Safety and Security	ALL	TBD	Operational Coordination	Community Preparedness	TBD	DHS	Coordinate federal preparedness activities and operations within the United States to respond to and recover from terrorist attacks, major disasters, and other emergencies, including biotoxin incidents.
1c	Safety and Security	Detect, Prevent, Characterize, and Attribute the Biotoxin Incident	Evaluation of Threat	Intelligence and Information Sharing	TBD	N/A	DOJ/FBI	Conduct Threat Credibility Evaluation, (TCE) to 1) evaluate the credibility of the threat; 2) discuss whether the threat or incident may result in a substantial loss of life or injury; and 3) support coordination of initial operations if necessary.

Phase	Community Lifeline	LOE	Objective(s)	Core Capability	Public Health Preparedness and Response Capability(ies)	ESF/RSF	LFA	Task
1c	Safety and Security	Detect, Prevent, Characterize, and Attribute the Biotoxin Incident	Evaluation of Threat	Screening, Search, and Detection	TBD	N/A	DOJ/FBI	Conduct Threat Credibility Evaluation, (TCE) to 1) evaluate the credibility of the threat; 2) discuss whether the threat or incident may result in a substantial loss of life or injury; and 3) support coordination of initial operations if necessary.
1c	Safety and Security	Detect, Prevent, Characterize, and Attribute the Biotoxin Incident	Evaluation of Threat	Operational Coordination	TBD	N/A	DOJ/FBI	Conduct Threat Credibility Evaluation, (TCE) to 1) evaluate the credibility of the threat; 2) discuss whether the threat or incident may result in a substantial loss of life or injury; and 3) support coordination of initial operations if necessary.
1c	Safety and Security	Public Health and Safety	TBD	Operational Coordination	Emergency Operations Coordination	ESF #5: Information and Planning	DHS/FEMA	FEMA region coordinates with state and local emergency management organizations.
1c	Safety and Security	Public Health and Safety	TBD	Operational Coordination	Emergency Operations Coordination	ESF #5: Information and Planning	DHS/FEMA	FEMA region coordinates with FEMA Headquarters, Homeland Security Advisors, and fusion centers.
1c	Safety and Security	Public Health and Safety	TBD	Environmental Response/ Health and Safety	Responder Safety and Health	TBD	HHS/CDC	Conduct assessments and identify mitigation solutions for worker safety and health issues related to exposure to the biological agent and other hazards workers face during response and recovery options.

Phase	Community Lifeline	LOE	Objective(s)	Core Capability	Public Health Preparedness and Response Capability(ies)	ESF/RSF	LFA	Task
1c	Safety and Security	Public Health and Safety	TBD	Threats and Hazards Identification	TBD	N/A	DOJ/FBI	Conduct joint investigations, as appropriate, with health authorities (providers of both human and veterinary healthcare) to protect public health and safety and attribute the intentional biotoxin incident.
1c	Safety and Security	Public Health and Safety	TBD	On-scene Security, Protection, and Law Enforcement	TBD	N/A	DOJ/FBI	Conduct joint investigations, as appropriate, with health authorities (providers of both human and veterinary healthcare) to protect public health and safety and attribute the intentional biotoxin incident.
1c	Safety and Security	Public Health and Safety	TBD	On-scene Security, Protection, and Law Enforcement	TBD	ESF #13: Public Safety and Security	DHS/USCG	Conduct port and waterway coastal security, search and rescue, and marine safety missions during a biotoxin incident.
1c	Safety and Security	Public Health and Safety	TBD	Environmental Response/ Health and Safety	TBD	TBD	HHS/CMS	Perform LSC surveys of long-term care facilities, to include parts of the physical environment standards applicable to long-term care facilities.
1c	Safety and Security	Public Health and Safety	TBD	On-scene Security, Protection, and Law Enforcement	TBD	TBD	DHS/USCG	Enforce quarantines, per direction of HHS/CDC, in the maritime environment.

Phase	Community Lifeline	LOE	Objective(s)	Core Capability	Public Health Preparedness and Response Capability(ies)	ESF/RSF	LFA	Task
1c	TBD	Detect, Prevent, Characterize, and Attribute the Biotoxin Incident	TBD	Operational Coordination	Community Preparedness	ESF #5: Information and Planning	DHS/S&T	Leverage the results of the ongoing DHS CBRN Strategic Risk Assessment, a scenario-based risk assessment that includes a range of biotoxin scenarios, to help identify priorities for protective and consequence management efforts.
1c	TBD	Detect, Prevent, Characterize, and Attribute the Biotoxin Incident	TBD	Situational Assessment	Community Preparedness	ESF #5: Information and Planning	DHS/S&T	Leverage the results of the ongoing DHS CBRN Strategic Risk Assessment, a scenario-based risk assessment that includes a range of biotoxin scenarios, to help identify priorities for protective and consequence management efforts.
1c	TBD	Detect, Prevent, Characterize, and Attribute the Biotoxin Incident	TBD	Threats and Hazards Identification	Public Health Surveillance and Epidemiological Investigation	Non-ESF/RSF specific	DHS/S&T	Provide technical SMEs to advise responses to biotoxin events, to include scientists at DHS-led laboratories with expertise in biotoxins.
1c	TBD	Public Health and Safety	TBD	Health and Social Services	Public Health Surveillance and Epidemiological Investigation	TBD	TBD	National unified coordination works with state public health agencies to implement response; state and local public health organizations coordinate with HHS/CDC.
1c	TBD	Public Health and Safety	TBD	TBD	TBD	TBD	DHS/CISA	Conduct contingency outreach to owners and operators of critical infrastructure regarding the evolving biotoxin incident.
1c	TBD	TBD	TBD	Operational Coordination	Information Sharing	All	DHS/CISA	Share information and build greater trust to make CIKR resources secure.

Phase	Community Lifeline	LOE	Objective(s)	Core Capability	Public Health Preparedness and Response Capability(ies)	ESF/RSF	LFA	Task
2a	ALL	ALL	TBD	Public Health, Healthcare, and Emergency Medical Services	ALL	TBD	DHS/FEMA	Coordinate ESFs, RSFs, and funding support to impacted areas during Stafford Act disasters through the Unified Federal Review (UFR) process.
2a	ALL	ALL	TBD	Operational Coordination	Emergency Operations Coordination	TBD	DHS/FEMA	Manage coordinating centers, funding sources, non-medical supply resourcing, and supporting ESFs/RSFs.
2a	ALL	ALL	TBD	Operational Coordination	Emergency Operations Coordination	TBD	HHS	Provide operational coordination and communications, mission intelligence and information sharing, risk and fatality management, environmental response, health and safety, and mass care services.
2a	ALL	ALL	TBD	Operational Coordination	Emergency Operations Coordination	TBD	TBD	Establish a national-level UCG, with a Federal Health Coordinating Officer (FHCO) designated for affected state(s).
2a	ALL	ALL	TBD	Operational Coordination	Emergency Operations Coordination	TBD	TBD	Potentially establish a state-level UCG.
2a	ALL	ALL	TBD	Fatality Management Services	Fatality Management	TBD	HHS	Provide operational coordination and communications, mission intelligence and information sharing, risk and fatality management, environmental response, health and safety, and mass care services.

Phase	Community Lifeline	LOE	Objective(s)	Core Capability	Public Health Preparedness and Response Capability(ies)	ESF/RSF	LFA	Task
2a	ALL	ALL	TBD	Operational Communications	Information Sharing	TBD	HHS	Provide operational coordination and communications, mission intelligence and information sharing, risk and fatality management, environmental response, health and safety, and mass care services.
2a	ALL	ALL	TBD	Mass Care Services	Mass Care	TBD	HHS	Provide operational coordination and communications, mission intelligence and information sharing, risk and fatality management, environmental response, health and safety, and mass care services.
2a	ALL	ALL	TBD	Logistics and Supply Chain Management	Medical Materiel Management and Distribution	TBD	DHS/FEMA	Manage coordinating centers, funding sources, non-medical supply resourcing, and supporting ESFs/RSFs.
2a	All	All	TBD	TBD	TBD	All	DHS/FEMA	Fully implement the LOEs described in the BIA.
2a	ALL	ALL	TBD	TBD	TBD	All	DHS/FEMA	Fully implement the LOEs described in the Biotoxins Addendum.
2a	ALL	ALL	TBD	Environmental Response/ Health and Safety	TBD	TBD	HHS	Provide operational coordination and communications, mission intelligence and information sharing, risk and fatality management, environmental response, health and safety, and mass care services.

Phase	Community Lifeline	LOE	Objective(s)	Core Capability	Public Health Preparedness and Response Capability(ies)	ESF/RSF	LFA	Task
2a	Communications	TBD	TBD	Operational Communications	Information Sharing	ESF #5: Information and Planning	DHS/CISA	Sustain communications with the respective sector coordinating councils and sector-specific government coordinating councils on appropriate information sharing related to the evolving biotoxin incident.
2a	Food, Water, Shelter	TBD	TBD	Housing	TBD	ESF #6: Mass Care, Emergency Assistance, Temporary Housing, and Human Services	HHS/CMS	Provide technical assistance to SLTT partners for certifying temporary facilities.
2a	Hazardous Materials	Control the Spread of Disease	Provide technical assistance and support to protect response and recovery workers.	Threats and Hazards Identification	Responder Safety and Health	Non-ESF/RSF specific	HHS/CDC	Implement efficacy testing of PPE, decontamination solutions/ techniques, and other countermeasures.

Phase	Community Lifeline	LOE	Objective(s)	Core Capability	Public Health Preparedness and Response Capability(ies)	ESF/RSF	LFA	Task
2a	Hazardous Materials	Detect, Prevent, Characterize, and Attribute the Biotoxin Incident	Conduct assessments and identify effective mitigation solutions for worker safety and health problems related to exposure to the biological agent and other hazards workers face during response and recovery operations.	Environmental Response/ Health and Safety	Emergency Operations Coordination	ESF #10: Oil and Hazardous Materials Response	EPA	Determine analytical laboratory capacity for environmental samples.
2a	Hazardous Materials	Detect, Prevent, Characterize, and Attribute the Biotoxin Incident	Provide technical assistance and support to protect response and recovery workers.	Threats and Hazards Identification	Emergency Operations Coordination	ESF #10: Oil and Hazardous Materials Response	EPA	Use environmental predictive models (e.g., fate and transport, risk assessment, decontamination operations).
2a	Hazardous Materials	Detect, Prevent, Characterize, and Attribute the Biotoxin Incident	Query surveillance systems for evidence of suspicious events involving biotoxins.	Operational Coordination	Public Health Surveillance and Epidemiological Investigation	TBD	DHS	Provide biosurveillance capabilities and coordinate information sharing with federal partners on health-related threats to humans, animals, and plants.



Phase	Community Lifeline	LOE	Objective(s)	Core Capability	Public Health Preparedness and Response Capability(ies)	ESF/RSF	LFA	Task
2a	Health and Medical	ALL	TBD	Operational Coordination	Emergency Operations Coordination	ESF #5: Information and Planning	DHS	Serve as an information conduit across multiple agencies and to the National Security Council (NSC) for the following: Operational coordination Situational awareness and decision support through the National Biosurveillance Integration Center/Information System (NBIC/NBIS) Public information and warning messaging
2a	Health and Medical	ALL	TBD	Operational Coordination	Emergency Operations Coordination	TBD	HHS	Coordinate with OFAs and impacted SLTT, private sector, and non-governmental partners, as appropriate, in responding to a biotoxin incident.
2a	Health and Medical	ALL	TBD	Public Health, Healthcare, and Emergency Medical Services	Emergency Operations Coordination	TBD	HHS/RECs	Engage state and local emergency management and public health entities.
2a	Health and Medical	ALL	TBD	Operational Coordination	Emergency Operations Coordination	TBD	TBD	State-level Unified Command (UC) may be established; state and local emergency management and public health entities coordinate. Regional-level UCG may be established, with FHCO covering a region. State and local public health organizations coordinate with HHS/CDC.

Phase	Community Lifeline	LOE	Objective(s)	Core Capability	Public Health Preparedness and Response Capability(ies)	ESF/RSF	LFA	Task
2a	Health and Medical	ALL	TBD	Public Health, Healthcare, and Emergency Medical Services	Medical Surge	TBD	DHS/FEMA	Develop DHS Surge Capacity Force personnel requirements with the Office of Personnel Management (OPM) and other federal D/As.
2a	Health and Medical	ALL	TBD	Public Health, Healthcare, and Emergency Medical Services	TBD	TBD	HHS/CDC	Continue to coordinate with state and local government entities.
2a	Health and Medical	ALL	TBD	Public Health, Healthcare, and Emergency Medical Services	TBD	TBD	HHS/CDC	Provide funding to SLTTs and public health partner organizations for public health emergency preparedness and response.
2a	Health and Medical	ALL	TBD	Public Health, Healthcare, and Emergency Medical Services	TBD	TBD	HHS	Advise federal officials on response- and recovery-related cross-cutting public health, climate change, health equity, and science initiatives.
2a	Health and Medical	ALL	TBD	Public Health, Healthcare, and Emergency Medical Services	TBD	TBD	HHS	Deploy officers to support ESF #8 mission assignments and D/A partners by ensuring stable, continuous operations of critical community, business, and government functions that are essential to human health and safety.

Phase	Community Lifeline	LOE	Objective(s)	Core Capability	Public Health Preparedness and Response Capability(ies)	ESF/RSF	LFA	Task
2a	Health and Medical	Control the Spread of Disease	TBD	Public Health, Healthcare, and Emergency Medical Services	Public Health Surveillance and Epidemiological Investigation	TBD	TBD	Provide forecasting through coordinated disease modeling entities (federal and academic centers of excellence) to inform USG and SLTT organizations of predicted new cases, hospitalizations, and fatalities in support of resource request management.
2a	Health and Medical	Control the Spread of Disease	Provide technical assistance and support to protect response and recovery workers.	Threats and Hazards Identification	Responder Safety and Health	Non-ESF/RSF specific	EPA	Implement efficacy testing of PPE, decontamination solutions/techniques, and other countermeasures.
2a	Health and Medical	Detect, Prevent, Characterize, and Attribute the Biotxin Incident	Conduct assessments and identify effective mitigation solutions for worker safety and health problems related to exposure to the biological agent and other hazards workers face during response and recovery operations.	Operational Coordination	Emergency Operations Coordination	ESF #8: Public Health and Medical Services	EPA	Assess risks for potentially contaminated indoor/outdoor areas, assets, and infrastructure.
2a	Health and Medical	Detect, Prevent, Characterize, and Attribute the Biotxin Incident	TBD	Operational Coordination	Emergency Operations Coordination	TBD	TBD	LFA should initiate intra-departmental component coordination to address medical and public health impacts and to begin to evaluate effectiveness of existing MCMs.

Phase	Community Lifeline	LOE	Objective(s)	Core Capability	Public Health Preparedness and Response Capability(ies)	ESF/RSF	LFA	Task
2a	Health and Medical	Detect, Prevent, Characterize, and Attribute the Biotoxin Incident	TBD	Operational Coordination	Information Sharing	TBD	TBD	LFA should initiate early unified coordination with appropriate partners, starting with ESF #8 coordinating agencies, to identify potential response capabilities required currently and in the near future if the biological incident increases in size and/or complexity.
2a	Health and Medical	Detect, Prevent, Characterize, and Attribute the Biotoxin Incident	TBD	Public Health, Healthcare, and Emergency Medical Services	Public Health Laboratory Testing	TBD	HHS/CDC	Provide laboratory support for the identification, confirmation, characterization, and drug susceptibility of the biological agent.
2a	Health and Medical	Detect, Prevent, Characterize, and Attribute the Biotoxin Incident	Query surveillance systems for evidence of suspicious events involving biotoxins.	Situational Assessment	Public Health Surveillance and Epidemiological Investigation	ESF #8: Public Health and Medical Services	DHS	Provide biosurveillance capabilities and coordinate information sharing with federal partners on health-related threats to humans, animals, and plants.
2a	Health and Medical	Detect, Prevent, Characterize, and Attribute the Biotoxin Incident	TBD	Situational Assessment	Public Health Surveillance and Epidemiological Investigation	TBD	HHS/CDC	Provide key subject matter expertise and technical analysis regarding the human health impacts of toxin exposure to federal and SLTT partners.
2a	Health and Medical	Detect, Prevent, Characterize, and Attribute the Biotoxin Incident	TBD	Situational Assessment	Public Health Surveillance and Epidemiological Investigation	TBD	HHS/FDA	Provide key subject matter expertise and technical analysis regarding the human health impacts of toxin exposure to federal and SLTT partners.

Phase	Community Lifeline	LOE	Objective(s)	Core Capability	Public Health Preparedness and Response Capability(ies)	ESF/RSF	LFA	Task
2a	Health and Medical	Detect, Prevent, Characterize, and Attribute the Biotoxin Incident	TBD	Public Health, Healthcare, and Emergency Medical Services	Public Health Surveillance and Epidemiological Investigation	TBD	HHS/CDC	Conduct epidemiologic and surveillance activities to define cases, identify the populations at risk, and determine the source of exposure.
2a	Health and Medical	Detect, Prevent, Characterize, and Attribute the Biotoxin Incident	TBD	Situational Assessment	Public Health Surveillance and Epidemiological Investigation	ESF #8: Public Health and Medical Services	HHS	Enhance situational awareness through increased epidemiological studies at the federal and SLTT levels to gain a better understanding of the biological agent threat.
2a	Health and Medical	Detect, Prevent, Characterize, and Attribute the Biotoxin Incident	TBD	Operational Coordination	Public Health Surveillance and Epidemiological Investigation	TBD	TBD	LFA should initiate early unified coordination with appropriate partners, starting with ESF #8 coordinating agencies, to identify potential response capabilities required currently and in the near future if the biological incident increases in size and/or complexity.
2a	Health and Medical	Detect, Prevent, Characterize, and Attribute the Biotoxin Incident	TBD	Public Health, Healthcare, and Emergency Medical Services	TBD	TBD	HHS/NIH	Provide subject-matter and technical expertise for senior leader decisions, health professionals, and the public. Topics include causes, diagnosis, treatment, control, and prevention of diseases.
2a	Health and Medical	Healthcare Resilience	TBD	TBD	Emergency Operations Coordination	ESF #8: Public Health and Medical Services	CMS	Provide data to enable provision of care for those with access and functional needs during the response and recovery.

Phase	Community Lifeline	LOE	Objective(s)	Core Capability	Public Health Preparedness and Response Capability(ies)	ESF/RSF	LFA	Task
2a	Health and Medical	Healthcare Resilience	TBD	TBD	Emergency Public Information and Warning	ESF #8: Public Health and Medical Services	HHS/CMS	Provide data to enable provision of care for those with access and functional needs during the response and recovery.
2a	Health and Medical	Healthcare Resilience	TBD	Public Health, Healthcare, and Emergency Medical Services	NPIs	TBD	HHS/CDC	Provide guidance on non-pharmaceutical mitigation interventions and strategies to assist with the containment and control of infectious agents.
2a	Health and Medical	Medical Countermeasures	TBD	Operational Coordination	Information Sharing	TBD	TBD	LFA should initiate intra-departmental component coordination to address medical and public health impacts and to begin to evaluate effectiveness of existing MCMS.
2a	Health and Medical	Medical Countermeasures	TBD	Public Health, Healthcare, and Emergency Medical Services	Medical Countermeasure Dispensing and Administration	TBD	HHS/ASPR	Deploy and distribute biotoxin MCMS.
2a	Health and Medical	Medical Countermeasures	TBD	Public Health, Healthcare, and Emergency Medical Services	Medical Countermeasure Dispensing and Administration	TBD	HHS/ASPR	Develop and ensure the safety, security, acquisition, and effective use of biotoxin MCMS.
2a	Health and Medical	Medical Countermeasures	TBD	Public Health, Healthcare, and Emergency Medical Services	Medical Countermeasure Dispensing and Administration	TBD	HHS/CDC	Develop and ensure the safety, security, acquisition, and effective use of biotoxin MCMS.

Phase	Community Lifeline	LOE	Objective(s)	Core Capability	Public Health Preparedness and Response Capability(ies)	ESF/RSF	LFA	Task
2a	Health and Medical	Medical Counter-measures	TBD	Public Health, Healthcare, and Emergency Medical Services	Medical Countermeasure Dispensing and Administration	TBD	HHS/FDA	Develop and ensure the safety, security, acquisition, and effective use of biotoxin MCMs.
2a	Health and Medical	Medical Counter-measures	TBD	Public Health, Healthcare, and Emergency Medical Services	Medical Countermeasure Dispensing and Administration	TBD	HHS/NIH	Develop and ensure the safety, security, acquisition, and effective use of biotoxin MCMs.
2a	Health and Medical	Medical Counter-measures	TBD	Public Health, Healthcare, and Emergency Medical Services	Medical Countermeasure Dispensing and Administration	TBD	HHS/CDC	Advise federal and SLTT partners regarding clinical care and MCM recommendations for biotoxins.
2a	Health and Medical	Medical Counter-measures	TBD	Public Health, Healthcare, and Emergency Medical Services	Medical Countermeasure Dispensing and Administration	TBD	HHS/FDA	Advise federal and SLTT partners regarding clinical care and MCM recommendations for biotoxins.
2a	Health and Medical	Medical Counter-measures	TBD	Public Health, Healthcare, and Emergency Medical Services	Medical Countermeasure Dispensing and Administration	TBD	HHS/NIH	Conduct research on biotoxins and facilitate the discovery and development of MCMs, including diagnostics, therapeutics, and vaccines, to prevent, treat, and control a biotoxin incident in the U.S. and globally.
2a	Health and Medical	Public Health and Safety	TBD	Health and Social Services	Emergency Operations Coordination	ESF #8: Public Health and Medical Services	HHS/CMS	Supply regulatory waivers and modifications for federal requirements, as needed, and authorities for some healthcare actions.

Phase	Community Lifeline	LOE	Objective(s)	Core Capability	Public Health Preparedness and Response Capability(ies)	ESF/RSF	LFA	Task
2a	Health and Medical	Public Health and Safety	TBD	Health and Social Services	Emergency Operations Coordination	TBD	HHS/CMS	<p>Waive sanctions under the Emergency Medical Treatment and Labor Act (EMTALA) for up to the duration of the public health emergency (PHE) (in the case of a PHE involving pandemic infectious disease, the general EMTALA waiver authority remains in effect until the termination of the declaration of the PHE) for the following:</p> <p>Redirecting an individual who “comes to the emergency department” (ED) (term defined in § 489.24(b)) to an alternate location for a medical screening examination (MSE), pursuant to a state emergency preparedness plan or, as applicable, a state pandemic preparedness plan. Even when a waiver is in effect, there is still the expectation that everyone who comes to the ED will receive an appropriate MSE, if not in the ED, then at the Alternate Care Site (ACS) to which they are redirected or relocated.</p> <p>Inappropriately transferring an individual protected under EMTALA when the transfer is necessitated by the circumstances of the declared emergencies. Transfers may be inappropriate under EMTALA for several reasons.</p>



Phase	Community Lifeline	LOE	Objective(s)	Core Capability	Public Health Preparedness and Response Capability(ies)	ESF/RSF	LFA	Task
2a	Health and Medical	Public Health and Safety	TBD	Public Health, Healthcare, and Emergency Medical Services	TBD	TBD	DHS/USCG	Facilitate preparedness for and response to biotoxin incidents to protect public health and the environment.
2a	Health and Medical	TBD	TBD	Public Health, Healthcare, and Emergency Medical Services	Community Preparedness	TBD	TBD	National-level unified coordination initiated; state(s) would be encouraged to prepare for appearance of domestic cases.
2a	Safety and Security	ALL	TBD	Operational Coordination	TBD	TBD	DHS	Coordinate federal preparedness activities and operations within the United States to respond to and recover from terrorist attacks, major disasters, and other emergencies, including biotoxin incidents.
2a	Safety and Security	Detect, Prevent, Characterize and Attribute the Biotoxin Incident	Disrupt and prevent the incident.	On-scene Security, Protection, and Law Enforcement	TBD	N/A	DOJ/FBI	Lead and coordinate the operational law enforcement response to intentional biotoxin incidents, including investigative, crime-scene, forensic, and other activities to prevent subsequent attacks, and identify, apprehend, and prosecute, as appropriate, the perpetrators of such incidents.
2a	Safety and Security	Detect, Prevent, Characterize and Attribute the Biotoxin Incident	Disrupt and prevent the incident.	Interdiction and Disruption	TBD	N/A	DOJ/FBI	Lead and coordinate the operational law enforcement response to intentional biotoxin incidents, including investigative, crime-scene, forensic, and other activities to prevent subsequent attacks, and identify, apprehend, and prosecute, as appropriate, the perpetrators of such incidents.

Phase	Community Lifeline	LOE	Objective(s)	Core Capability	Public Health Preparedness and Response Capability(ies)	ESF/RSF	LFA	Task
2a	Safety and Security	Detect, Prevent, Characterize and Attribute the Biotoxin Incident	Disrupt and prevent the incident.	Screening, Search, and Detection	TBD	N/A	DOJ/FBI	Lead and coordinate the operational law enforcement response to intentional biotoxin incidents, including investigative, crime-scene, forensic, and other activities to prevent subsequent attacks, and identify, apprehend, and prosecute, as appropriate, the perpetrators of such incidents.
2a	Safety and Security	Detect, Prevent, Characterize and Attribute the Biotoxin Incident	Disrupt and prevent the incident.	Operational Coordination	TBD	N/A	DOJ/FBI	Lead and coordinate the operational law enforcement response to intentional biotoxin incidents, including investigative, crime-scene, forensic, and other activities to prevent subsequent attacks, and identify, apprehend, and prosecute, as appropriate, the perpetrators of such incidents.
2a	Safety and Security	Detect, Prevent, Characterize and Attribute the Biotoxin Incident	Disrupt and prevent the incident.	Threats and Hazards Identification	TBD	N/A	DOJ/FBI	Conduct joint investigations, as appropriate, with law enforcement and other health authorities (providers of both human and veterinary healthcare) to protect public health and safety and attribute the intentional biotoxin incident.
2a	Safety and Security	Detect, Prevent, Characterize and Attribute the Biotoxin Incident	Disrupt and prevent the incident.	Interdiction and Disruption	TBD	N/A	DOJ/FBI	Conduct joint investigations, as appropriate, with law enforcement and other health authorities (providers of both human and veterinary healthcare) to protect public health and safety and attribute the intentional biotoxin incident.

Phase	Community Lifeline	LOE	Objective(s)	Core Capability	Public Health Preparedness and Response Capability(ies)	ESF/RSF	LFA	Task
2a	Safety and Security	Detect, Prevent, Characterize and Attribute the Biotxin Incident	Disrupt and prevent the incident.	Screening, Search, and Detection	TBD	N/A	DOJ/FBI	Conduct joint investigations, as appropriate, with law enforcement and other health authorities (providers of both human and veterinary healthcare) to protect public health and safety and attribute the intentional biotoxin incident.
2a	Safety and Security	Detect, Prevent, Characterize and Attribute the Biotxin Incident	Disrupt and prevent the incident.	Operational Coordination	TBD	N/A	DOJ/FBI	Conduct joint investigations, as appropriate, with law enforcement and other health authorities (providers of both human and veterinary healthcare) to protect public health and safety and attribute the intentional biotoxin incident.
2a	Safety and Security	Detect, Prevent, Characterize and Attribute the Biotxin Incident	Disrupt and prevent the incident.	Threats and Hazards Identification	TBD	N/A	HHS/CDC	Conduct joint investigations, as appropriate, with law enforcement and other health authorities (providers of both human and veterinary healthcare) to protect public health and safety and attribute the intentional biotoxin incident.
2a	Safety and Security	Detect, Prevent, Characterize and Attribute the Biotxin Incident	Disrupt and prevent the incident.	Interdiction and Disruption	TBD	N/A	HHS/CDC	Conduct joint investigations, as appropriate, with law enforcement and other health authorities (providers of both human and veterinary healthcare) to protect public health and safety and attribute the intentional biotoxin incident.

Phase	Community Lifeline	LOE	Objective(s)	Core Capability	Public Health Preparedness and Response Capability(ies)	ESF/RSF	LFA	Task
2a	Safety and Security	Detect, Prevent, Characterize and Attribute the Biotoxin Incident	Disrupt and prevent the incident.	Screening, Search, and Detection	TBD	N/A	HHS/CDC	Conduct joint investigations, as appropriate, with law enforcement and other health authorities (providers of both human and veterinary healthcare) to protect public health and safety and attribute the intentional biotoxin incident.
2a	Safety and Security	Detect, Prevent, Characterize and Attribute the Biotoxin Incident	Disrupt and prevent the incident.	Operational Coordination	TBD	N/A	HHS/CDC	Conduct joint investigations, as appropriate, with law enforcement and other health authorities (providers of both human and veterinary healthcare) to protect public health and safety and attribute the intentional biotoxin incident.
2a	Safety and Security	Public Health and Safety	TBD	Operational Coordination	Emergency Operations Coordination	ESF #5: Information and Planning	DHS/FEMA	FEMA region coordinates with state and local emergency management organizations.
2a	Safety and Security	Public Health and Safety	TBD	Operational Coordination	Emergency Operations Coordination	ESF #5: Information and Planning	DHS/FEMA	FEMA region coordinates with FEMA Headquarters, Homeland Security Advisors, and fusion centers.
2a	Safety and Security	Public Health and Safety	TBD	Environmental Response/ Health and Safety	Responder Safety and Health	TBD	HHS/CDC	Conduct assessments and identify mitigation solutions for worker safety and health issues related to exposure to the biological agent and other hazards workers face during response and recovery options.

Phase	Community Lifeline	LOE	Objective(s)	Core Capability	Public Health Preparedness and Response Capability(ies)	ESF/RSF	LFA	Task
2a	Safety and Security	Public Health and Safety	Provide public safety and security assistance.	On-scene Security, Protection, and Law Enforcement	TBD	ESF #13: Public Safety and Security	DOJ/ATF	Provide general and specialized federal law enforcement resources to support SLTT, insular area, and federal law enforcement agencies overwhelmed by disasters or acts of terrorism. ESF #13 federal law enforcement officers (FLEOs) can perform a wide array of missions as defined through the DHS/FEMA mission assignment process.
2a	Safety and Security	Public Health and Safety	TBD	On-scene Security, Protection, and Law Enforcement	TBD	ESF #13: Public Safety and Security	DHS/USCG	Conduct port and waterway coastal security, search and rescue, and marine safety missions during a biotoxin incident.
2a	Safety and Security	Public Health and Safety	TBD	Environmental Response/ Health and Safety	TBD	TBD	HHS/CMS	Perform LSC surveys of long-term care facilities, to include parts of the physical environment standards applicable to long-term care facilities.
2a	Safety and Security	TBD	TBD	On-scene Security, Protection, and Law Enforcement	TBD	TBD	DHS/USCG	Enforce quarantines, per direction of the HHS/CDC, in the maritime environment.

Phase	Community Lifeline	LOE	Objective(s)	Core Capability	Public Health Preparedness and Response Capability(ies)	ESF/RSF	LFA	Task
2a	TBD	Control the Spread of Disease	TBD	Operational Coordination	Emergency Operations Coordination	TBD	TBD	Fully establish federal-level Unified Coordination Group (UCG), which may include either a non-Stafford arrangement (with LFA and its ESF #8 coordinating agencies) or a Stafford arrangement (with DHS/FEMA partnered with LFA and various designated ESFs and liaisons, depending upon the National Response Coordination Center [NRCC] activation level deemed appropriate).
2a	TBD	Control the Spread of Disease	TBD	Operational Coordination	Emergency Operations Coordination	TBD	TBD	Activate, under the Stafford Act, the NRCC to facilitate coordination among USG agencies/partners or, for non-Stafford Act events, establish dedicated federal or federally leased spaces to support such coordination, with the HHS Secretary's Operations Center (SOC) as the central focus for such coordination.
2a	TBD	Control the Spread of Disease	TBD	Situational Assessment	TBD	TBD	TBD	Establish reporting schedule for a Senior Leadership Brief to inform the NSC and federal partners on key response actions taken and situational awareness of the biological incident.

Phase	Community Lifeline	LOE	Objective(s)	Core Capability	Public Health Preparedness and Response Capability(ies)	ESF/RSF	LFA	Task
2a	TBD	Detect, Prevent, Characterize, and Attribute the Biotoxin Incident	TBD	TBD	Community Preparedness	ESF #5: Information and Planning	DHS/S&T	Leverage the results of the ongoing DHS CBRN Strategic Risk Assessment, a scenario-based risk assessment that includes a range of biotoxin scenarios, to help identify priorities for protective and consequence management efforts.
2a	TBD	Detect, Prevent, Characterize, and Attribute the Biotoxin Incident	TBD	Threats and Hazards Identification	Public Health Surveillance and Epidemiological Investigation	Non-ESF/RSF specific	DHS/S&T	Perform toxin threat characterization research at the National Biodefense Analysis and Countermeasures Center (NBACC), which DHS/S&T operates and maintains in collaboration with the DOJ/FBI, to rapidly fill knowledge gaps in toxin threat characteristics critical to operational response (e.g., environmental stability, decontamination effectiveness).
2a	TBD	Detect, Prevent, Characterize, and Attribute the Biotoxin Incident	TBD	Threats and Hazards Identification	Public Health Surveillance and Epidemiological Investigation	Non-ESF/RSF specific	DHS/S&T	Provide technical SMEs to advise responses to biotoxin events, to include scientists at DHS-led laboratories with expertise in biotoxins.
2a	TBD	Public Health and Safety	TBD	Public Health, Healthcare, and Emergency Medical Services	TBD	ESF #13: Public Safety and Security	DHS/CBP	Determine the admission of an alien not lawfully admitted for permanent residence who is showing symptoms of serious toxicity or illness that may be of public health significance.
2a	TBD	TBD	TBD	Operational Coordination	Information Sharing	All	DHS/CISA	Share information and build greater trust to make CIKR resources secure.

Phase	Community Lifeline	LOE	Objective(s)	Core Capability	Public Health Preparedness and Response Capability(ies)	ESF/RSF	LFA	Task
2a	TBD	TBD	TBD	Health and Social Services	Public Health Surveillance and Epidemiological Investigation	TBD	TBD	National unified coordination works with state public health agencies to implement response; state and local public health organizations coordinate with HHS/CDC.
2a	TBD	TBD	TBD	TBD	TBD	TBD	DHS/CBP	Detain and/or quarantine individuals until medical authorities have been alerted.
2a	TBD	TBD	TBD	TBD	TBD	TBD	DHS/CISA	Conduct contingency outreach to owners and operators of critical infrastructure regarding the evolving biotoxin incident.
2b	ALL	ALL	TBD	Public Health, Healthcare, and Emergency Medical Services	ALL	TBD	DHS/FEMA	Coordinate ESFs, RSFs, and funding support to impacted areas during Stafford Act disasters through the UFR process.
2b	ALL	ALL	TBD	Operational Coordination	Emergency Operations Coordination	TBD	DHS/FEMA	Manage coordinating centers, funding sources, non-medical supply resourcing, and supporting ESFs/RSFs.
2b	ALL	ALL	TBD	Logistics and Supply Chain Management	Medical Materiel Management and Distribution	TBD	DHS/FEMA	Manage coordinating centers, funding sources, non-medical supply resourcing, and supporting ESFs/RSFs.
2b	Communi- cations	TBD	TBD	Operational Communi- cations	Information Sharing	ESF #5: Information and Planning	DHS/CISA	Sustain communications with the respective sector coordinating councils and sector-specific government coordinating councils on appropriate information sharing related to the evolving biotoxin incident.



Phase	Community Lifeline	LOE	Objective(s)	Core Capability	Public Health Preparedness and Response Capability(ies)	ESF/RSF	LFA	Task
2b	Food, Water, Shelter	TBD	TBD	Housing	TBD	ESF #6: Mass Care, Emergency Assistance, Temporary Housing, and Human Services	HHS/CMS	Provide technical assistance to SLTT partners for certifying temporary facilities.
2b	Hazardous Materials	Control the Spread of Disease	Conduct assessments and identify effective mitigation solutions for worker safety and health problems related to exposure to the biological agent and other hazards workers face during response and recovery operations.	Environmental Response/ Health and Safety	Emergency Operations Coordination	ESF #10: Oil and Hazardous Materials Response	EPA	Implement strategies and capabilities for containing and mitigating the spread of contamination and eliminating sources of further distribution via air, water, contact, or other means.

Phase	Community Lifeline	LOE	Objective(s)	Core Capability	Public Health Preparedness and Response Capability(ies)	ESF/RSF	LFA	Task
2b	Hazardous Materials	Detect, Prevent, Characterize, and Attribute the Biotoxin Incident	Conduct assessments and identify effective mitigation solutions for worker safety and health problems related to exposure to the biological agent and other hazards workers face during response and recovery operations.	Threats and Hazards Identification	Emergency Operations Coordination	ESF #10: Oil and Hazardous Materials Response	EPA	Assess risks for potentially contaminated indoor/outdoor areas, assets, and infrastructure.
2b	Hazardous Materials	Detect, Prevent, Characterize, and Attribute the Biotoxin Incident	Conduct assessments and identify effective mitigation solutions for worker safety and health problems related to exposure to the biological agent and other hazards workers face during response and recovery operations.	Threats and Hazards Identification	Emergency Operations Coordination	ESF #10: Oil and Hazardous Materials Response	EPA	Determine site characterization/extent of contamination.
2b	Hazardous Materials	Detect, Prevent, Characterize, and Attribute the Biotoxin Incident	Provide technical expertise and guidance on the public health issues of the medical need's population.	Threats and Hazards Identification	Emergency Operations Coordination	ESF #10: Oil and Hazardous Materials Response	EPA	Use environmental predictive models (e.g., fate and transport, risk assessment, decontamination operations).

Phase	Community Lifeline	LOE	Objective(s)	Core Capability	Public Health Preparedness and Response Capability(ies)	ESF/RSF	LFA	Task
2b	Hazardous Materials	TBD	Conduct assessments and identify effective mitigation solutions for worker safety and health problems related to exposure to the biological agent and other hazards workers face during response and recovery operations.	Environmental Response/ Health and Safety	Emergency Operations Coordination	ESF #10: Oil and Hazardous Materials Response	EPA	Implement strategies and procedures to identify, stabilize, and maintain infrastructure and property such that they can continued to be used or operated before and after remediation.
2b	Health and Medical	ALL	TBD	Operational Coordination	Emergency Operations Coordination	TBD	HHS	Coordinate with OFAs and impacted SLTT, private sector, and non-governmental partners, as appropriate, in responding to a biotoxin incident.
2b	Health and Medical	ALL	TBD	Public Health, Healthcare, and Emergency Medical Services	Medical Surge	TBD	DHS/FEMA	Develop DHS Surge Capacity Force personnel requirements with OPM and other federal D/As.
2b	Health and Medical	ALL	TBD	Public Health, Healthcare, and Emergency Medical Services	TBD	TBD	HHS/CDC	Coordinate with state and local public health organizations.
2b	Health and Medical	ALL	TBD	Public Health, Healthcare, and Emergency Medical Services	TBD	TBD	HHS	Advise federal officials on response- and recovery-related cross-cutting public health, climate change, health equity, and science initiatives.

Phase	Community Lifeline	LOE	Objective(s)	Core Capability	Public Health Preparedness and Response Capability(ies)	ESF/RSF	LFA	Task
2b	Health and Medical	Control the Spread of Disease	Provide technical assistance and support to protect response and recovery workers.	Threats and Hazards Identification	Responder Safety and Health	Non-ESF/RSF specific	EPA	Implement efficacy testing of PPE, decontamination solutions/techniques, and other countermeasures.
2b	Health and Medical	Detect, Prevent, Characterize, and Attribute the Biotoxin Incident	TBD	Operational Coordination	Public Health Surveillance and Epidemiological Investigation	ESF #5: Information and Planning	DHS	Serve as an information conduit across multiple agencies and to the NSC for the following: Operational coordination Situational awareness and decision support through the NBIC/NBIS Public information and warning messaging
2b	Health and Medical	Detect, Prevent, Characterize, and Attribute the Biotoxin Incident	TBD	Public Health, Healthcare, and Emergency Medical Services	Public Health Surveillance and Epidemiological Investigation	TBD	HHS/CDC	Provide key subject matter expertise and technical analysis regarding the human health impacts of toxin exposure to federal and SLTT partners.
2b	Health and Medical	Detect, Prevent, Characterize, and Attribute the Biotoxin Incident	TBD	Public Health, Healthcare, and Emergency Medical Services	Public Health Surveillance and Epidemiological Investigation	TBD	HHS/FDA	Provide key subject matter expertise and technical analysis regarding the human health impacts of toxin exposure to federal and SLTT partners.
2b	Health and Medical	Healthcare Resilience	TBD	TBD	Emergency Operations Coordination	ESF #8: Public Health and Medical Services	HHS/CMS	Provide data to enable provision of care for those with access and functional needs during the response and recovery.

Phase	Community Lifeline	LOE	Objective(s)	Core Capability	Public Health Preparedness and Response Capability(ies)	ESF/RSF	LFA	Task
2b	Health and Medical	Healthcare Resilience	TBD	TBD	Emergency Public Information and Warning	ESF #8: Public Health and Medical Services	HHS/CMS	Provide data to enable provision of care for those with access and functional needs during the response and recovery.
2b	Health and Medical	Public Health and Safety	TBD	Health and Social Services	Emergency Operations Coordination	ESF #8: Public Health and Medical Services	HHS/CMS	Supply regulatory waivers and modifications for federal requirements, as needed, and authorities for some healthcare actions.
2b	Safety and Security	ALL	TBD	Operational Coordination	TBD	TBD	DHS	Coordinate federal preparedness activities and operations within the U.S. to respond to and recover from terrorist attacks, major disasters, and other emergencies, including biotoxin incidents.
2b	Safety and Security	Detect, Prevent, Characterize and Attribute the Biotoxin Incident	Disrupt and prevent the incident.	On-scene Security, Protection, and Law Enforcement	TBD	N/A	DOJ/FBI	Lead and coordinate the operational law enforcement response to intentional biotoxin incidents, including investigative, crime-scene, forensic, and other activities to prevent subsequent attacks, and identify, apprehend, and prosecute, as appropriate, the perpetrators of such incidents.
2b	Safety and Security	Detect, Prevent, Characterize and Attribute the Biotoxin Incident	Disrupt and prevent the incident.	Interdiction and Disruption	TBD	N/A	DOJ/FBI	Lead and coordinate the operational law enforcement response to intentional biotoxin incidents, including investigative, crime-scene, forensic, and other activities to prevent subsequent attacks, and identify, apprehend, and prosecute, as appropriate, the perpetrators of such incidents.

Phase	Community Lifeline	LOE	Objective(s)	Core Capability	Public Health Preparedness and Response Capability(ies)	ESF/RSF	LFA	Task
2b	Safety and Security	Detect, Prevent, Characterize and Attribute the Biotoxin Incident	Disrupt and prevent the incident.	Screening, Search, and Detection	TBD	N/A	DOJ/FBI	Lead and coordinate the operational law enforcement response to intentional biotoxin incidents, including investigative, crime-scene, forensic, and other activities to prevent subsequent attacks, and identify, apprehend, and prosecute, as appropriate, the perpetrators of such incidents.
2b	Safety and Security	Detect, Prevent, Characterize and Attribute the Biotoxin Incident	Disrupt and prevent the incident.	Operational Coordination	TBD	N/A	DOJ/FBI	Lead and coordinate the operational law enforcement response to intentional biotoxin incidents, including investigative, crime-scene, forensic, and other activities to prevent subsequent attacks, and identify, apprehend, and prosecute, as appropriate, the perpetrators of such incidents.
2b	Safety and Security	Detect, Prevent, Characterize and Attribute the Biotoxin Incident	Disrupt and prevent the incident.	Threats and Hazards Identification	TBD	N/A	DOJ/FBI	Conduct joint investigations, as appropriate, with law enforcement and other health authorities (providers of both human and veterinary healthcare) to protect public health and safety and attribute the intentional biotoxin incident.
2b	Safety and Security	Detect, Prevent, Characterize and Attribute the Biotoxin Incident	Disrupt and prevent the incident.	Interdiction and Disruption	TBD	N/A	DOJ/FBI	Conduct joint investigations, as appropriate, with law enforcement and other health authorities (providers of both human and veterinary healthcare) to protect public health and safety and attribute the intentional biotoxin incident.

Phase	Community Lifeline	LOE	Objective(s)	Core Capability	Public Health Preparedness and Response Capability(ies)	ESF/RSF	LFA	Task
2b	Safety and Security	Detect, Prevent, Characterize and Attribute the Biotxin Incident	Disrupt and prevent the incident.	Screening, Search, and Detection	TBD	N/A	DOJ/FBI	Conduct joint investigations, as appropriate, with law enforcement and other health authorities (providers of both human and veterinary healthcare) to protect public health and safety and attribute the intentional biotoxin incident.
2b	Safety and Security	Detect, Prevent, Characterize and Attribute the Biotxin Incident	Disrupt and prevent the incident.	Operational Coordination	TBD	N/A	DOJ/FBI	Conduct joint investigations, as appropriate, with law enforcement and other health authorities (providers of both human and veterinary healthcare) to protect public health and safety and attribute the intentional biotoxin incident.
2b	Safety and Security	Detect, Prevent, Characterize and Attribute the Biotxin Incident	Disrupt and prevent the incident.	Threats and Hazards Identification	TBD	N/A	HHS/CDC	Conduct joint investigations, as appropriate, with law enforcement and other health authorities (providers of both human and veterinary healthcare) to protect public health and safety and attribute the intentional biotoxin incident.
2b	Safety and Security	Detect, Prevent, Characterize and Attribute the Biotxin Incident	Disrupt and prevent the incident.	Interdiction and Disruption	TBD	N/A	HHS/CDC	Conduct joint investigations, as appropriate, with law enforcement and other health authorities (providers of both human and veterinary healthcare) to protect public health and safety and attribute the intentional biotoxin incident.

Phase	Community Lifeline	LOE	Objective(s)	Core Capability	Public Health Preparedness and Response Capability(ies)	ESF/RSF	LFA	Task
2b	Safety and Security	Detect, Prevent, Characterize and Attribute the Biotxin Incident	Disrupt and prevent the incident.	Screening, Search, and Detection	TBD	N/A	HHS/CDC	Conduct joint investigations, as appropriate, with law enforcement and other health authorities (providers of both human and veterinary healthcare) to protect public health and safety and attribute the intentional biotoxin incident.
2b	Safety and Security	Detect, Prevent, Characterize and Attribute the Biotxin Incident	Disrupt and prevent the incident.	Operational Coordination	TBD	N/A	HHS/CDC	Conduct joint investigations, as appropriate, with law enforcement and other health authorities (providers of both human and veterinary healthcare) to protect public health and safety and attribute the intentional biotoxin incident.
2b	Safety and Security	Public Health and Safety	TBD	Operational Coordination	Emergency Operations Coordination	ESF #5: Information and Planning	DHS/FEMA	FEMA region coordinates with state and local emergency management organizations.
2b	Safety and Security	Public Health and Safety	TBD	Operational Coordination	Emergency Operations Coordination	ESF #5: Information and Planning	DHS/FEMA	FEMA region coordinates with FEMA Headquarters, Homeland Security Advisors, and fusion centers.
2b	Safety and Security	Public Health and Safety	Provide public safety and security assistance.	On-scene Security, Protection, and Law Enforcement	TBD	ESF #13: Public Safety and Security	DOJ/ATF	Provide general and specialized federal law enforcement resources to support SLTT, insular area, and federal law enforcement agencies overwhelmed by disasters or acts of terrorism. ESF #13 FLEOs can perform a wide array of missions as defined through the DHS/FEMA mission assignment process.



Phase	Community Lifeline	LOE	Objective(s)	Core Capability	Public Health Preparedness and Response Capability(ies)	ESF/RSF	LFA	Task
2b	Safety and Security	Public Health and Safety	TBD	On-scene Security, Protection, and Law Enforcement	TBD	ESF #13: Public Safety and Security	DHS/USCG	Conduct port and waterway coastal security, search and rescue, and marine safety missions during a biotoxin incident.
2b	Safety and Security	Public Health and Safety	TBD	Environmental Response/ Health and Safety	TBD	TBD	HHS/CMS	Perform LSC surveys of long-term care facilities, to include parts of the physical environment standards applicable to long-term care facilities.
2b	Safety and Security	Public Health and Safety	TBD	On-scene Security, Protection, and Law Enforcement	TBD	TBD	DHS/USCG	Enforce quarantines, per direction of the CDC, in the maritime environment.
2b	TBD	Control the Spread of Disease	TBD	Situational Assessment	TBD	TBD	TBD	Establish reporting schedule for a Senior Leadership Brief to inform the NSC and federal partners on key response actions taken and situational awareness of the biotoxin incident.
2b	TBD	Detect, Prevent, Characterize, and Attribute the Biotoxin Incident	TBD	TBD	Community Preparedness	ESF #5: Information and Planning	DHS/S&T	Leverage the results of the ongoing DHS CBRN Strategic Risk Assessment, a scenario-based risk assessment that includes a range of biotoxin scenarios, to help identify priorities for protective and consequence management efforts.
2b	TBD	Detect, Prevent, Characterize, and Attribute the Biotoxin Incident	TBD	Threats and Hazards Identification	Public Health Surveillance and Epidemiological Investigation	Non-ESF/RSF specific	DHS/S&T	Provide technical SMEs to advise responses to biotoxin events, to include scientists at DHS-led laboratories with expertise in biotoxins.

Phase	Community Lifeline	LOE	Objective(s)	Core Capability	Public Health Preparedness and Response Capability(ies)	ESF/RSF	LFA	Task
2b	TBD	Public Health and Safety	TBD	Health and Social Services	Public Health Surveillance and Epidemiological Investigation	TBD	TBD	National UC works with state public health agencies to implement response; state and local public health organizations coordinate with CDC.
2b	TBD	Public Health and Safety	TBD	Public Health, Healthcare, and Emergency Medical Services	TBD	ESF #13: Public Safety and Security	DHS/CBP	Determine the admission of an alien not lawfully admitted for permanent residence who is showing symptoms of serious toxicity or illness that may be of public health significance.
2b	TBD	Public Health and Safety	TBD	TBD	TBD	TBD	DHS/CBP	Detain and/or quarantine individuals until medical authorities have been alerted.
2b	TBD	TBD	TBD	Operational Coordination	Information Sharing	All	DHS/CISA	Share information and build greater trust to make CIKR resources secure.
2c	ALL	ALL	TBD	Public Health, Healthcare, and Emergency Medical Services	ALL	TBD	DHS/FEMA	Coordinate ESFs, RSFs, and funding support to impacted areas during Stafford Act disasters through the UFR process.
2c	ALL	ALL	TBD	Operational Coordination	Emergency Operations Coordination	TBD	DHS/FEMA	Manage coordinating centers, funding sources, non-medical supply resourcing, and supporting ESFs/RSFs.
2c	ALL	ALL	TBD	Logistics and Supply Chain Management	Medical Materiel Management and Distribution	TBD	DHS/FEMA	Manage coordinating centers, funding sources, non-medical supply resourcing, and supporting ESFs/RSFs.

Phase	Community Lifeline	LOE	Objective(s)	Core Capability	Public Health Preparedness and Response Capability(ies)	ESF/RSF	LFA	Task
2c	Communications	Public Health and Safety	TBD	Operational Coordination	Emergency Public Information and Warning	ESF #5: Information and Planning	DHS	Serve as an information conduit across multiple agencies and to the NSC for the following: Operational coordination Situational awareness and decision support through the NBIC/NBIS Public information and warning messaging
2c	Communications	TBD	TBD	Operational Communications	Information Sharing	ESF #5: Information and Planning	DHS/CISA	Sustain communications with the respective sector coordinating councils and sector-specific government coordinating councils on appropriate information sharing related to the evolving biotoxin incident.
2c	Food, Water, Shelter	TBD	TBD	Housing	TBD	ESF #6: Mass Care, Emergency Assistance, Temporary Housing, and Human Services	HHS/CMS	Provide technical assistance to SLTT partners for certifying temporary facilities.

Phase	Community Lifeline	LOE	Objective(s)	Core Capability	Public Health Preparedness and Response Capability(ies)	ESF/RSF	LFA	Task
2c	Hazardous Materials	Detect, Prevent, Characterize, and Attribute the Biotoxin Incident	Conduct assessments and identify effective mitigation solutions for worker safety and health problems related to exposure to the biological agent and other hazards workers face during response and recovery operations.	Threats and Hazards Identification	Emergency Operations Coordination	ESF #10: Oil and Hazardous Materials Response	EPA	Determine site characterization/extent of contamination.
2c	Hazardous Materials	Detect, Prevent, Characterize, and Attribute the Biotoxin Incident	Conduct assessments and identify effective mitigation solutions for worker safety and health problems related to exposure to the biological agent and other hazards workers face during response and recovery operations.	Environmental Response/ Health and Safety	Emergency Operations Coordination	ESF #10: Oil and Hazardous Materials Response	EPA	Coordinate sampling and analysis.
2c	Hazardous Materials	TBD	Provide technical assistance and support to protect response and recovery workers.	Environmental Response/ Health and Safety	Emergency Operations Coordination	ESF #10: Oil and Hazardous Materials Response	EPA	Manage incident/response waste (staging, storage, handling, transport, treatment, and disposal) as agreed upon in the mission assignment.

Phase	Community Lifeline	LOE	Objective(s)	Core Capability	Public Health Preparedness and Response Capability(ies)	ESF/RSF	LFA	Task
2c	Health and Medical	ALL	TBD	Operational Coordination	Emergency Operations Coordination	TBD	HHS	Coordinate with OFAs and impacted SLTT, private sector, and non-governmental partners, as appropriate, in responding to a biotoxin incident.
2c	Health and Medical	ALL	TBD	Public Health, Healthcare, and Emergency Medical Services	TBD	TBD	HHS	Advise federal officials on response and recovery-related cross-cutting public health, climate change, health equity, and science initiatives.
2c	Health and Medical	Detect, Prevent, Characterize, and Attribute the Biotoxin Incident	TBD	Public Health, Healthcare, and Emergency Medical Services	Public Health Surveillance and Epidemiological Investigation	TBD	HHS/CDC	Provide key subject matter expertise and technical analysis regarding the human health impacts of toxin exposure to federal and SLTT partners.
2c	Health and Medical	Detect, Prevent, Characterize, and Attribute the Biotoxin Incident	TBD	Public Health, Healthcare, and Emergency Medical Services	Public Health Surveillance and Epidemiological Investigation	TBD	HHS/FDA	Provide key subject matter expertise and technical analysis regarding the human health impacts of toxin exposure to federal and SLTT partners.
2c	Health and Medical	Healthcare Resilience	Provide technical assistance and support to protect response and recovery workers.	Environmental Response/ Health and Safety	Emergency Operations Coordination	ESF #10: Oil and Hazardous Materials Response	EPA	Identify disinfection and decontamination technologies, strategy, and logistics for decontamination of personnel/equipment.
2c	Health and Medical	Healthcare Resilience	Provide technical assistance and support to protect response and recovery workers.	Environmental Response/ Health and Safety	Emergency Operations Coordination	ESF #10: Oil and Hazardous Materials Response	EPA	Decontaminate indoor/outdoor areas, including, buildings, critical infrastructure, and surface water, and verify decontamination effectiveness.

Phase	Community Lifeline	LOE	Objective(s)	Core Capability	Public Health Preparedness and Response Capability(ies)	ESF/RSF	LFA	Task
2c	Health and Medical	Healthcare Resilience	TBD	TBD	Emergency Public Information and Warning	ESF #8: Public Health and Medical Services	HHS/CMS	Provide data to enable provision of care for those with access and functional needs during the response and recovery.
2c	Health and Medical	Healthcare Resilience	TBD	TBD	Emergency Operations Coordination	ESF #8: Public Health and Medical Services	HHS/CMS	Provide data to enable provision of care for those with access and functional needs during the response and recovery.
2c	Health and Medical	Public Health and Safety	TBD	Health and Social Services	Emergency Operations Coordination	ESF #8: Public Health and Medical Services	HHS/CMS	Supply regulatory waivers and modifications for federal requirements, as needed, and authorities for some healthcare actions.
2c	Safety and Security	ALL	TBD	Operational Coordination	TBD	TBD	DHS	Coordinate federal preparedness activities and operations within the U.S. to respond to and recover from terrorist attacks, major disasters, and other emergencies, including biotoxin incidents.
2c	Safety and Security	Detect, Prevent, Characterize and Attribute the Biotoxin Incident	Disrupt and prevent the incident.	On-scene Security, Protection, and Law Enforcement	TBD	N/A	DOJ/FBI	Lead and coordinate the operational law enforcement response to intentional biotoxin incidents, including investigative, crime-scene, forensic, and other activities to prevent subsequent attacks, and identify, apprehend, and prosecute, as appropriate, the perpetrators of such incidents.

Phase	Community Lifeline	LOE	Objective(s)	Core Capability	Public Health Preparedness and Response Capability(ies)	ESF/RSF	LFA	Task
2c	Safety and Security	Detect, Prevent, Characterize and Attribute the Biotxin Incident	Disrupt and prevent the incident.	Interdiction and Disruption	TBD	N/A	DOJ/FBI	Lead and coordinate the operational law enforcement response to intentional biotoxin incidents, including investigative, crime-scene, forensic, and other activities to prevent subsequent attacks, and identify, apprehend, and prosecute, as appropriate, the perpetrators of such incidents.
2c	Safety and Security	Detect, Prevent, Characterize and Attribute the Biotxin Incident	Disrupt and prevent the incident.	Screening, Search, and Detection	TBD	N/A	DOJ/FBI	Lead and coordinate the operational law enforcement response to intentional biotoxin incidents, including investigative, crime-scene, forensic, and other activities to prevent subsequent attacks, and identify, apprehend, and prosecute, as appropriate, the perpetrators of such incidents.
2c	Safety and Security	Detect, Prevent, Characterize and Attribute the Biotxin Incident	Disrupt and prevent the incident.	Operational Coordination	TBD	N/A	DOJ/FBI	Lead and coordinate the operational law enforcement response to intentional biotoxin incidents, including investigative, crime-scene, forensic, and other activities to prevent subsequent attacks, and identify, apprehend, and prosecute, as appropriate, the perpetrators of such incidents.

Phase	Community Lifeline	LOE	Objective(s)	Core Capability	Public Health Preparedness and Response Capability(ies)	ESF/RSF	LFA	Task
2c	Safety and Security	Detect, Prevent, Characterize and Attribute the Biotoxin Incident	Disrupt and prevent the incident.	Threats and Hazards Identification	TBD	N/A	DOJ/FBI	Conduct joint investigations, as appropriate, with law enforcement and other health authorities (providers of both human and veterinary healthcare) to protect public health and safety and attribute the intentional biotoxin incident.
2c	Safety and Security	Detect, Prevent, Characterize and Attribute the Biotoxin Incident	Disrupt and prevent the incident.	Interdiction and Disruption	TBD	N/A	DOJ/FBI	Conduct joint investigations, as appropriate, with law enforcement and other health authorities (providers of both human and veterinary healthcare) to protect public health and safety and attribute the intentional biotoxin incident.
2c	Safety and Security	Detect, Prevent, Characterize and Attribute the Biotoxin Incident	Disrupt and prevent the incident.	Screening, Search, and Detection	TBD	N/A	DOJ/FBI	Conduct joint investigations, as appropriate, with law enforcement and other health authorities (providers of both human and veterinary healthcare) to protect public health and safety and attribute the intentional biotoxin incident.
2c	Safety and Security	Detect, Prevent, Characterize and Attribute the Biotoxin Incident	Disrupt and prevent the incident.	Operational Coordination	TBD	N/A	DOJ/FBI	Conduct joint investigations, as appropriate, with law enforcement and other health authorities (providers of both human and veterinary healthcare) to protect public health and safety and attribute the intentional biotoxin incident.



Phase	Community Lifeline	LOE	Objective(s)	Core Capability	Public Health Preparedness and Response Capability(ies)	ESF/RSF	LFA	Task
2c	Safety and Security	Detect, Prevent, Characterize and Attribute the Biotoxin Incident	Disrupt and prevent the incident.	Threats and Hazards Identification	TBD	N/A	HHS/CDC	Conduct joint investigations, as appropriate, with law enforcement and other health authorities (providers of both human and veterinary healthcare) to protect public health and safety and attribute the intentional biotoxin incident.
2c	Safety and Security	Detect, Prevent, Characterize and Attribute the Biotoxin Incident	Disrupt and prevent the incident.	Interdiction and Disruption	TBD	N/A	HHS/CDC	Conduct joint investigations, as appropriate, with law enforcement and other health authorities (providers of both human and veterinary healthcare) to protect public health and safety and attribute the intentional biotoxin incident.
2c	Safety and Security	Detect, Prevent, Characterize and Attribute the Biotoxin Incident	Disrupt and prevent the incident.	Screening, Search, and Detection	TBD	N/A	HHS/CDC	Conduct joint investigations, as appropriate, with law enforcement and other health authorities (providers of both human and veterinary healthcare) to protect public health and safety and attribute the intentional biotoxin incident.
2c	Safety and Security	Detect, Prevent, Characterize and Attribute the Biotoxin Incident	Disrupt and prevent the incident.	Operational Coordination	TBD	N/A	HHS/CDC	Conduct joint investigations, as appropriate, with law enforcement and other health authorities (providers of both human and veterinary healthcare) to protect public health and safety and attribute the intentional biotoxin incident.

Phase	Community Lifeline	LOE	Objective(s)	Core Capability	Public Health Preparedness and Response Capability(ies)	ESF/RSF	LFA	Task
2c	Safety and Security	Public Health and Safety	Provide technical assistance and support to protect response and recovery workers.	Environmental Response/ Health and Safety	Emergency Operations Coordination	ESF #10: Oil and Hazardous Materials Response	EPA	Establish a site-specific remediation plan that addresses health and safety, decontamination efficacy, clean-up goals, and waste management issues and includes a Sampling Analysis Plan (SAP).
2c	Safety and Security	Public Health and Safety	TBD	Operational Coordination	Emergency Operations Coordination	ESF #5: Information and Planning	DHS/FEMA	FEMA region coordinates with state and local emergency management organizations.
2c	Safety and Security	Public Health and Safety	TBD	Operational Coordination	Emergency Operations Coordination	ESF #5: Information and Planning	DHS/FEMA	FEMA region coordinates with FEMA Headquarters, Homeland Security Advisors, and fusion centers.
2c	Safety and Security	Public Health and Safety	Provide public safety and security assistance.	On-scene Security, Protection, and Law Enforcement	TBD	ESF #13: Public Safety and Security	DOJ/ATF	Provide general and specialized federal law enforcement resources to support SLTT, insular area, and federal law enforcement agencies overwhelmed by disasters or acts of terrorism. ESF #13 FLEOs can perform a wide array of missions as defined through the DHS/FEMA mission assignment process.
2c	Safety and Security	Public Health and Safety	TBD	On-scene Security, Protection, and Law Enforcement	TBD	ESF #13: Public Safety and Security	DHS/USCG	Conduct port and waterway coastal security, search and rescue, and marine safety missions during a biotoxin incident.
2c	Safety and Security	Public Health and Safety	TBD	Environmental Response/ Health and Safety	TBD	TBD	HHS/CMS	Perform LSC surveys of long-term care facilities, to include parts of the physical environment standards applicable to long-term care facilities.

Phase	Community Lifeline	LOE	Objective(s)	Core Capability	Public Health Preparedness and Response Capability(ies)	ESF/RSF	LFA	Task
2c	Safety and Security	Public Health and Safety	TBD	On-scene Security, Protection, and Law Enforcement	TBD	TBD	DHS/USCG	Enforce quarantines, per direction of the CDC, in the maritime environment.
2c	TBD	Detect, Prevent, Characterize, and Attribute the Biotxin Incident	TBD	Operational Coordination	Community Preparedness	ESF #5: Information and Planning	DHS/S&T	Leverage the results of the ongoing DHS CBRN Strategic Risk Assessment, a scenario-based risk assessment that includes a range of biotoxin scenarios, to help identify priorities for protective and consequence management efforts.
2c	TBD	Detect, Prevent, Characterize, and Attribute the Biotxin Incident	TBD	Threats and Hazards Identification	Public Health Surveillance and Epidemiological Investigation	Non-ESF/RSF specific	DHS/S&T	Perform toxin threat characterization research at the NBACC, which DHS/S&T operates and maintains in collaboration with the DOJ/FBI, to rapidly fill knowledge gaps in toxin threat characteristics critical to operational response (e.g., environmental stability, decontamination effectiveness).
2c	TBD	Detect, Prevent, Characterize, and Attribute the Biotxin Incident	TBD	Operational Coordination	Public Health Surveillance and Epidemiological Investigation	Non-ESF/RSF specific	DHS/S&T	Perform toxin threat characterization research at the NBACC, which DHS/S&T operates and maintains in collaboration with the DOJ/FBI, to rapidly fill knowledge gaps in toxin threat characteristics critical to operational response (e.g., environmental stability, decontamination effectiveness).

Phase	Community Lifeline	LOE	Objective(s)	Core Capability	Public Health Preparedness and Response Capability(ies)	ESF/RSF	LFA	Task
2c	TBD	Detect, Prevent, Characterize, and Attribute the Biotoxin Incident	TBD	Threats and Hazards Identification	Public Health Surveillance and Epidemiological Investigation	Non-ESF/RSF specific	DHS/S&T	Perform toxin threat characterization research at the NBACC, which DHS/S&T operates and maintains in collaboration with the DOJ/FBI, to rapidly fill knowledge gaps in toxin threat characteristics critical to operational response (e.g., environmental stability, decontamination effectiveness).
2c	TBD	Detect, Prevent, Characterize, and Attribute the Biotoxin Incident	TBD	Situational Assessment	Public Health Surveillance and Epidemiological Investigation	Non-ESF/RSF specific	DHS/S&T	Perform toxin threat characterization research at the NBACC, which DHS/S&T operates and maintains in collaboration with the DOJ/FBI, to rapidly fill knowledge gaps in toxin threat characteristics critical to operational response (e.g., environmental stability, decontamination effectiveness).
2c	TBD	Detect, Prevent, Characterize, and Attribute the Biotoxin Incident	TBD	Threats and Hazards Identification	Public Health Surveillance and Epidemiological Investigation	Non-ESF/RSF specific	DHS/S&T	Provide technical SMEs to advise responses to biotoxin events, to include scientists at DHS-led laboratories with expertise in biotoxins.
2c	TBD	Detect, Prevent, Characterize, and Attribute the Biotoxin Incident	TBD	Operational Coordination	Public Health Surveillance and Epidemiological Investigation	Non-ESF/RSF specific	DHS/S&T	Provide technical SMEs to advise responses to biotoxin events, to include scientists at DHS-led laboratories with expertise in biotoxins.

Phase	Community Lifeline	LOE	Objective(s)	Core Capability	Public Health Preparedness and Response Capability(ies)	ESF/RSF	LFA	Task
2c	TBD	Detect, Prevent, Characterize, and Attribute the Biotoxin Incident	TBD	Threats and Hazards Identification	Public Health Surveillance and Epidemiological Investigation	Non-ESF/RSF specific	DHS/S&T	Provide technical SMEs to advise responses to biotoxin events, to include scientists at DHS-led laboratories with expertise in biotoxins.
2c	TBD	Detect, Prevent, Characterize, and Attribute the Biotoxin Incident	TBD	Situational Assessment	Public Health Surveillance and Epidemiological Investigation	Non-ESF/RSF specific	DHS/S&T	Provide technical SMEs to advise responses to biotoxin events, to include scientists at DHS-led laboratories with expertise in biotoxins.
2c	TBD	Public Health and Safety	TBD	Health and Social Services	Public Health Surveillance and Epidemiological Investigation	TBD	TBD	National unified coordination works with state public health agencies to implement response; state and local public health organizations coordinate with CDC.
2c	TBD	Public Health and Safety	TBD	Public Health, Healthcare, and Emergency Medical Services	TBD	ESF #13: Public Safety and Security	DHS/CBP	Determine the admission of an alien not lawfully admitted for permanent residence who is showing symptoms of serious toxicity or illness that may be of public health significance.
2c	TBD	Public Health and Safety	TBD	TBD	TBD	TBD	DHS/CBP	Detain and/or quarantine individuals until medical authorities have been alerted.
2c	TBD	TBD	TBD	Operational Coordination	Information Sharing	ALL	DHS/CISA	Share information and build greater trust to make CIKR resources secure.

Phase	Community Lifeline	LOE	Objective(s)	Core Capability	Public Health Preparedness and Response Capability(ies)	ESF/RSF	LFA	Task
2c	TBD	TBD	TBD	Situational Assessment	TBD	TBD	TBD	Establish reporting schedule for a Senior Leadership Brief to inform the NSC and federal partners on key response actions taken and situational awareness of the biotoxin incident.
3a	Hazardous Materials	Detect, Prevent, Characterize, and Attribute the Biotoxin Incident	Conduct assessments and identify effective mitigation solutions for worker safety and health problems related to exposure to the biological agent and other hazards workers face during response and recovery operations.	Environmental Response/ Health and Safety	Emergency Operations Coordination	ESF #10: Oil and Hazardous Materials Response	EPA	Coordinate sampling and analysis.
3a	Hazardous Materials	Healthcare Resilience	Provide technical assistance and support to protect response and recovery workers.	Environmental Response/ Health and Safety	Emergency Operations Coordination	ESF #10: Oil and Hazardous Materials Response	EPA	Decontaminate indoor/outdoor areas, including, buildings, critical infrastructure, and surface water, and verify decontamination effectiveness.
3a	Hazardous Materials	Public Health and Safety	Provide technical assistance and support to protect response and recovery workers.	Environmental Response/ Health and Safety	Emergency Operations Coordination	ESF #10: Oil and Hazardous Materials Response	EPA	Manage incident/response waste (i.e., staging, storage, handling, transport, treatment, and disposal) as agreed upon in the mission assignment.

Phase	Community Lifeline	LOE	Objective(s)	Core Capability	Public Health Preparedness and Response Capability(ies)	ESF/RSF	LFA	Task
3a	Health and Medical	ALL	TBD	Public Health, Healthcare, and Emergency Medical Services	Community Recovery	TBD	HHS	Advise federal officials on response- and recovery-related cross-cutting public health, climate change, health equity, and science initiatives.
3a	Health and Medical	Healthcare Resilience	TBD	TBD	Emergency Operations Coordination	ESF #8: Public Health and Medical Services	HHS/CMS	Provide data to enable provision of care for those with access and functional needs during the response and recovery.
3a	Health and Medical	Healthcare Resilience	TBD	TBD	Emergency Public Information and Warning	ESF #8: Public Health and Medical Services	HHS/CMS	Provide data to enable provision of care for those with access and functional needs during the response and recovery.
3a	Safety and Security	ALL	TBD	Operational Coordination	TBD	TBD	DHS	Coordinate federal preparedness activities and operations within the U.S. to respond to and recover from terrorist attacks, major disasters, and other emergencies, including biotoxin incidents.
3a	Safety and Security	Public Health and Safety	TBD	Environmental Response/ Health and Safety	TBD	TBD	HHS/CMS	Perform LSC surveys of long-term care facilities, to include parts of the physical environment standards applicable to long-term care facilities.
3a	TBD	Detect, Prevent, Characterize, and Attribute the Biotxin Incident	TBD	Operational Coordination	Public Health Surveillance and Epidemiological Investigation	Non-ESF/RSF specific	DHS/S&T	Provide technical SMEs to advise responses to biotoxin events, to include scientists at DHS-led laboratories with expertise in biotoxins.

Phase	Community Lifeline	LOE	Objective(s)	Core Capability	Public Health Preparedness and Response Capability(ies)	ESF/RSF	LFA	Task
3a	TBD	Detect, Prevent, Characterize, and Attribute the Biotoxin Incident	TBD	Threats and Hazards Identification	Public Health Surveillance and Epidemiological Investigation	Non-ESF/RSF specific	DHS/S&T	Provide technical SMEs to advise responses to biotoxin events, to include scientists at DHS-led laboratories with expertise in biotoxins.
3a	TBD	Detect, Prevent, Characterize, and Attribute the Biotoxin Incident	TBD	Situational Assessment	Public Health Surveillance and Epidemiological Investigation	Non-ESF/RSF specific	DHS/S&T	Provide technical SMEs to advise responses to biotoxin events, to include scientists at DHS-led laboratories with expertise in biotoxins.
3a	TBD	Detect, Prevent, Characterize, and Attribute the Biotoxin Incident	TBD	Operational Coordination	Community Preparedness	ESF #5: Information and Planning	DHS/S&T	Leverage the results of the ongoing DHS CBRN Strategic Risk Assessment, a scenario-based risk assessment that includes a range of biotoxin scenarios, to help identify priorities for protective and consequence management efforts.
3a	TBD	Detect, Prevent, Characterize, and Attribute the Biotoxin Incident	TBD	Situational Assessment	Community Preparedness	ESF #5: Information and Planning	DHS/S&T	Leverage the results of the ongoing DHS CBRN Strategic Risk Assessment, a scenario-based risk assessment that includes a range of biotoxin scenarios, to help identify priorities for protective and consequence management efforts.
3a	TBD	Detect, Prevent, Characterize, and Attribute the Biotoxin Incident	TBD	Threats and Hazards Identification	Public Health Surveillance and Epidemiological Investigation	Non-ESF/RSF specific	DHS/S&T	Provide technical SMEs to advise responses to biotoxin events, to include scientists at DHS-led laboratories with expertise in biotoxins.



Phase	Community Lifeline	LOE	Objective(s)	Core Capability	Public Health Preparedness and Response Capability(ies)	ESF/RSF	LFA	Task
3a	TBD	Healthcare Resilience	Provide technical assistance and support to protect response and recovery workers.	Environmental Response/ Health and Safety	Emergency Operations Coordination	ESF #5: Emergency Management	EPA	Optimize logistics for the remediation/response (supply chain vulnerabilities, skilled worker availability).
TBD	Communications	Public Health and Safety	TBD	Public Information and Warning	Emergency Public Information and Warning	TBD	HHS/CDC	Disseminate key public health and risk mitigation messages to the public to provide timely, accurate, clear, consistent, and credible information. Ensure that accessibility of information is a key component in providing equitable access to programs and services.
TBD	Health and Medical	ALL	TBD	Public Health, Healthcare, and Emergency Medical Services	ALL	TBD	HHS/CDC	Provide technical assistance to SLTT, federal, and international partners to support public health activities.
TBD	Health and Medical	ALL	TBD	Public Health, Healthcare, and Emergency Medical Services	TBD	TBD	HHS/CDC	Provide rapid and sustained public health assessment, leadership, expertise, and support by deploying personnel both to the impacted area and to the CDC Emergency Operations Center (and other EOCs) for technical and administrative mission.
TBD	Health and Medical	ALL	TBD	Public Health, Healthcare, and Emergency Medical Services	TBD	TBD	HHS/CDC	Provide rapid and sustained public health assessment, leadership, expertise, and support by deploying personnel both to the impacted area and to the CDC Emergency Operations Center (and other EOCs) for technical and administrative mission.

Phase	Community Lifeline	LOE	Objective(s)	Core Capability	Public Health Preparedness and Response Capability(ies)	ESF/RSF	LFA	Task
TBD	Health and Medical	Detect, Prevent, Characterize, and Attribute the Biotoxin Incident	TBD	Public Health, Healthcare, and Emergency Medical Services	Public Health Surveillance and Epidemiological Investigation	TBD	HHS/CDC	Provide environmental assessment consultations and/or conduct environmental sampling to support epidemiologic and surveillance activities and identify exposure pathways to support implementation of intervention strategies.
TBD	Health and Medical	Detect, Prevent, Characterize, and Attribute the Biotoxin Incident	TBD	Public Health, Healthcare, and Emergency Medical Services	Public Health Surveillance and Epidemiological Investigation	TBD	HHS/CDC	Provide guidance on threats to human health from exposed animals, their clinical management, and appropriate control measures in animal populations.
TBD	Health and Medical	Detect, Prevent, Characterize, and Attribute the Biotoxin Incident	TBD	Public Health, Healthcare, and Emergency Medical Services	Public Health Laboratory Testing	TBD	HHS/CDC	Provide guidance on threats to human health from exposed animals, their clinical management, and appropriate control measures in animal populations.
TBD	Health and Medical	Healthcare Resilience	TBD	TBD	Emergency Operations Coordination	ESF #8: Public Health and Medical Services	DHS	In coordination with the Management Directorate, provide department-level workforce guidance and medical support, to include MCMs.
TBD	Health and Medical	Medical Countermeasures	TBD	TBD	Medical Countermeasure Dispensing and Administration	ESF #8: Public Health and Medical Services	DHS	In coordination with the Management Directorate, provide department-level workforce guidance and medical support, to include MCMs.

Phase	Community Lifeline	LOE	Objective(s)	Core Capability	Public Health Preparedness and Response Capability(ies)	ESF/RSF	LFA	Task
TBD	Health and Medical	Medical Counter-measures	TBD	Public Health, Healthcare, and Emergency Medical Services	Medical Countermeasure Dispensing and Administration	TBD	HHS/CDC	Provide guidance on use of MCMs (e.g., antimicrobials, vaccines, immunotherapeutics) for prophylaxis and treatment.
TBD	Health and Medical	Medical Counter-measures	TBD	Public Health, Healthcare, and Emergency Medical Services	NPIs	TBD	HHS/CDC	Provide guidance on strategies and use of NPIs.
TBD	Health and Medical	Public Health and Safety	TBD	Public Information and Warning	Emergency Public Information and Warning	TBD	HHS/CDC	Disseminate key public health and risk mitigation messages to the public to provide timely, accurate, clear, consistent, and credible information. Ensure that accessibility of information is a key component in providing equitable access to programs and services.
TBD	Health and Medical	TBD	TBD	Public Health, Healthcare, and Emergency Medical Services	Public Health Laboratory Testing	TBD	HHS/CDC	Provide guidance on identification, diagnosis, and clinical management of human cases.
TBD	Health and Medical	TBD	TBD	Public Health, Healthcare, and Emergency Medical Services	Public Health Surveillance and Epidemiological Investigation	TBD	HHS/CDC	Provide guidance on identification, diagnosis, and clinical management of human cases.
TBD	Health and Medical	TBD	TBD	Public Health, Healthcare, and Emergency Medical Services	TBD	TBD	HHS/CDC	Develop effective infection control practice recommendations for healthcare settings.

Phase	Community Lifeline	LOE	Objective(s)	Core Capability	Public Health Preparedness and Response Capability(ies)	ESF/RSF	LFA	Task
TBD	TBD	ALL	TBD	Operational Coordination	Emergency Operations Coordination	TBD	HHS	RECs coordinate with FEMA Regional Administrator(s).
TBD	TBD	TBD	TBD	TBD	TBD	TBD	DHS	Provide departmental-level workforce guidance and medical support, to include MCMs.

# Appendix Y: Acronyms and Abbreviations

For a comprehensive list of acronyms and abbreviations, refer to the *Biological Incident Annex (BIA) to the Response and Recovery Federal Interagency Operational Plan (FIOP)*.

**Table Y-1: Acronyms and Abbreviations**

Acronym	Term
ACS	Alternate Care Site
ASPR	Administration for Strategic Preparedness and Response (HHS)
ATF	Bureau of Alcohol, Tobacco, Firearms, and Explosives (DOJ)
BIA	Biological Incident Annex
Biotoxins	biological toxins
CBP	Customs and Border Patrol (DHS)
CBRN	chemical, biological, radiological, and nuclear
CDC	Centers for Disease Control and Prevention (HHS)
CIR	Critical Information Requirement
CISA	Cybersecurity and Infrastructure Security Agency (DHS)
CMS	Centers for Medicare & Medicaid Services (HHS)
CSAC	Chemical Security Analysis Center
CWMD	Countering Weapons of Mass Destruction
D/A	department/agency
DHS	Department of Homeland Security
DOD	Department of Defense
DOI	Department of the Interior
DOJ	Department of Justice
DOL	Department of Labor
DOS	Department of State
DOT	Department of Transportation
ED	emergency department
EMTALA	Emergency Medical Treatment and Labor Act
EOC	Emergency Operations Center
EPA	Environmental Protection Agency
ESF	Emergency Support Function
EUA	Emergency Use Authorization
FAIA	Food and Agriculture Incident Annex
FBI	Federal Bureau of Investigation (DOJ)
FDA	Food and Drug Administration (HHS)
FEMA	Federal Emergency Management Agency (DHS)
FHCO	Federal Health Coordinating Officer

FIOP	Federal Interagency Operational Plan
FLEO	federal law enforcement officer
HAC-TC	Hazard Awareness and Characterization Technology Center
HAZMAT	hazardous materials
HHS	Department of Health and Human Services
HRSA	Health Resources and Services Administration (HHS)
HSE	Homeland Security Enterprise
ICS	Incident Command System
JIC	Joint Information Center
LFA	lead federal agency
LOE	Line of Effort
LRN	Laboratory Response Network
LSC	Life Safety Code
MCM	medical countermeasure
MSE	medical screening examination
NBACC	National Biodefense Analysis and Countermeasures Center
NBIC	National Biosurveillance Integration Center
NBIS	National Biosurveillance Information System
NBTCC	National Biological Threat Characterization Center
NDMS	National Disaster Medical System
NGO	non-governmental organization
NIH	National Institutes of Health (HHS)
NIMS	National Incident Management System
NPI	non-pharmaceutical intervention
NRCC	National Response Coordination Center
NRF	National Response Framework
NSC	National Security Council
OASH	Office of Assistant Secretary of Health (HHS)
OFA	other federal agency
OHS	Office of Health Security (DHS)
OPM	Office of Personnel Management
OSHA	Occupational Safety and Health Administration (DOL)
PHE	Public Health Emergency
PHEMCE	Public Health Emergency Medical Countermeasures Enterprise
POE	port of entry
PPE	personal protective equipment
RA	Regional Administrator
REC	Regional Emergency Coordinator
RRCC	Regional Response Coordination Center
RSF	Recovery Support Function
S&T	Science and Technology Directorate (DHS)

SAP	Sampling Analysis Plan
SLTT	state, local, tribal, and territorial
SME	subject matter expert
SNS	Strategic National Stockpile
SOC	Secretary's Operations Center (HHS)
TCE	Threat Credibility Evaluation
TF	task force
UCG	Unified Coordination Group
UFR	Unified Federal Review
U.S.	United States
USCG	U.S. Coast Guard (DHS)
USDA	U.S. Department of Agriculture
USG	U.S. Government
USGS	U.S. Geological Survey
USMS	U.S. Marshals Service (DOJ)
USPHS	U.S. Public Health Service (HHS)
VA	Department of Veterans Affairs
WMD	Weapons of Mass Destruction
WMDSG	Weapons of Mass Destruction Strategic Group

This page is intentionally left blank.