

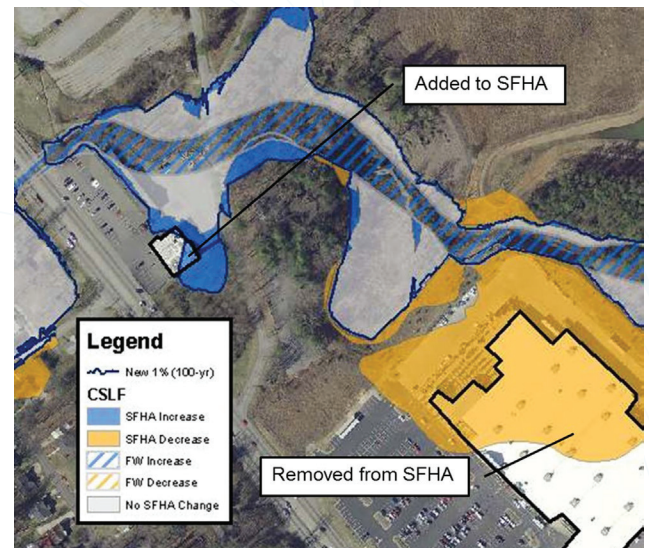
## RECIPES FOR RESILIENCE: Changes Since Last FIRM Datasets

How have flood zones changed since the last Flood Insurance Rate Map (FIRM)? Changes Since Last FIRM (CSLF) datasets show new and upcoming changes to floodplains, floodways, flood zones, and Coastal High Hazard Areas (Zones VE and V) in an easy-to-use, color-coded format.

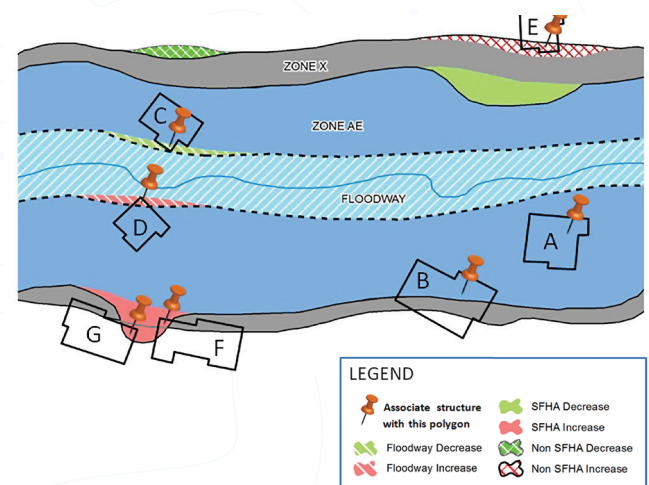
You can see where changes have happened or will happen due to updates in flood mapping studies, modeling, and topographic data. These datasets are part of FEMA's Flood Risk Database, which supports regulatory products (like FIRMs and Flood Insurance Studies) to give communities a more complete view of flood risk.

CSLF datasets benefit your community by:

- Giving local floodplain managers and building officials a snapshot of where floodplain regulations and standards will apply once the new maps are effective
- Showing insurance and real estate agents, citizens, and lenders where mandatory flood insurance will apply when FIRMs are updated
- Helping community leaders, planners, and other staff prioritize resources and protection efforts
- Making it easier for community officials and homeowners to identify the impact of potential flooding



Note: The CSLF dataset is not available for all communities. Visit the FEMA Flood Map Service Center ([www.msc.fema.gov](http://www.msc.fema.gov)) and search by State, county, and community to check for data availability.



## Put CSLF datasets to Work for You

Use the CSLF datasets with:

- Building footprints or addresses to check a specific building's flood risk
- Census data to estimate how many people (including vulnerable populations) are impacted by map changes
- Tax record data to help tax assessors or planners see where flood risk has increased and get the word out about flood insurance

From direct mailings to town hall meetings, CSLF datasets can support timely, targeted outreach to educate the public about the impact of upcoming FIRM changes.

The data is also helpful for community planning efforts like evacuation plans. Comparing the datasets with evacuation routes can show which are no longer usable, or combining the datasets with your own information can indicate which critical facilities would be damaged in a 1-percent-annual-chance flood scenario.

## What CSLF datasets are available for my community?

To learn more, visit the FEMA Flood Map Service Center ([msc.fema.gov](https://msc.fema.gov)). To check product availability in your area, select "Search All Products" and filter your selection by State, county, and/or community.

